



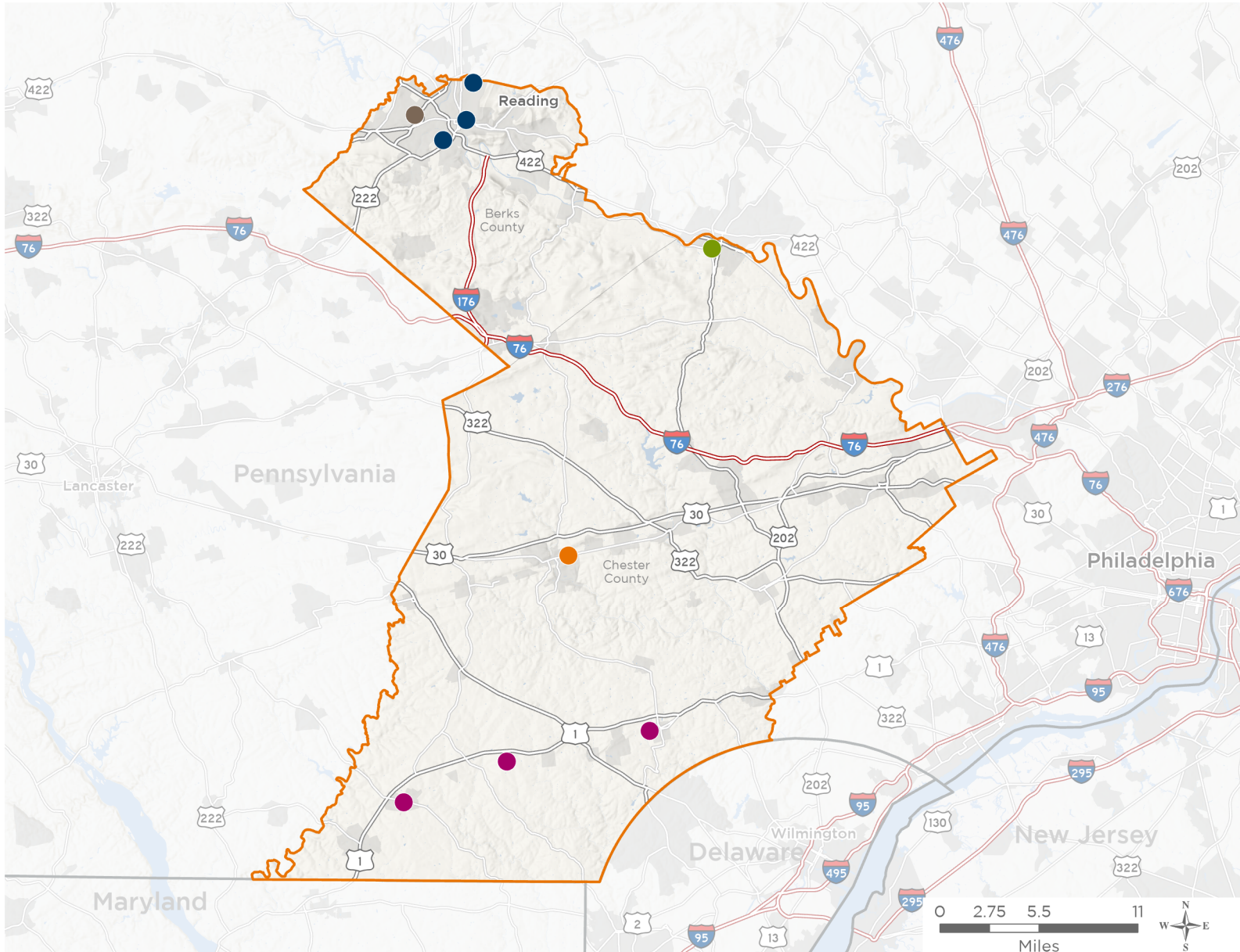
NATIONAL ASSOCIATION OF  
Community Health Centers®

# Representative Chrissy Houlahan

## 119th United States Congress

Pennsylvania's **6<sup>TH</sup>** Congressional District

The 5 federally-funded health center organizations with a presence in Pennsylvania's 6th Congressional District leverage **\$14,459,884** in federal investments to serve **116,425** patients.



**12**

**NUMBER OF DELIVERY SITES  
IN CONGRESSIONAL DISTRICT**

- Federally-funded Delivery Site (each color represents one organization)
- Health Center Program Look-Alikes
- 119th Congressional District Boundaries
- County Boundaries
- Populated Places
- Interstates
- Highways
- Major Roads

Notes | Delivery sites represent locations of organizations funded by the federal Health Center Program. Health Center Program Look-Alikes are community-based health care providers that meet the requirements of the HRSA Health Center Program, but do not receive Health Center Program funding. Some locations may overlap due to scale or may otherwise not be visible when mapped. Federal investments represent the total funding from the federal Health Center Program to grantees with a presence in the state in 2023.

Sources | Federally-Funded Delivery Site Locations and Health Center Program Look-Alikes: data.HRSA.gov, November 2024. Health Center Patients and Federal Funding | 2024 Uniform Data System, Bureau of Primary Health Care, HRSA.



NATIONAL ASSOCIATION OF  
Community Health Centers®

**Representative Chrissy Houlahan**  
119th United States Congress

Pennsylvania's **6<sup>TH</sup>** Congressional District

**12**

## **NUMBER OF DELIVERY SITES IN CONGRESSIONAL DISTRICT**

(main organization in bold)

### **BERKS COMMUNITY HEALTH CENTER**

Berks Community Health Center - Mobile Unit | 1110 Rockland St Reading, PA 19604-1501

Berks Community Health Center | 838 Penn St Reading, PA 19602-1108

Berks Community Health Center at Oakbrook | 1040 Liggett Ave Reading, PA 19611-1801

Berks Community Health Center at Rockland | 1110 Rockland St Reading, PA 19604-1525

### **CHESPENN HEALTH SERVICES, INC**

ChesPenn Center for Family Health at Coatesville | 744 E Lincoln Hwy Coatesville, PA 19320-3590

### **COMMUNITY HEALTH AND DENTAL CARE, INC.**

Community Health & Dental Care Mobile Dental Unit | 351 W Schuylkill Rd Pottstown, PA 19465-7438

Community Health & Dental Care, Inc. | 351 W Schuylkill Rd Pottstown, PA 19465-7438

### **KEYSTONE RURAL HEALTH CENTER**

Keystone Agricultural Worker Program - Berks Co. | 1981 State Hill Rd STE 1 Wyomissing, PA 19610-1605

### **LCH HEALTH & COMMUNITY SERVICES**

LCH Health and Community Services | 105 Vineyard Way STE 103 West Grove, PA 19390-8849

LCH Health and Community Services | 105 Vineyard Way STE 200 West Grove, PA 19390-8849

LCH Health and Community Services | 14 S 3rd St Oxford, PA 19363-1601

LCH Health and Community Services | 731 W Cypress St Kennett Square, PA 19348-2419