



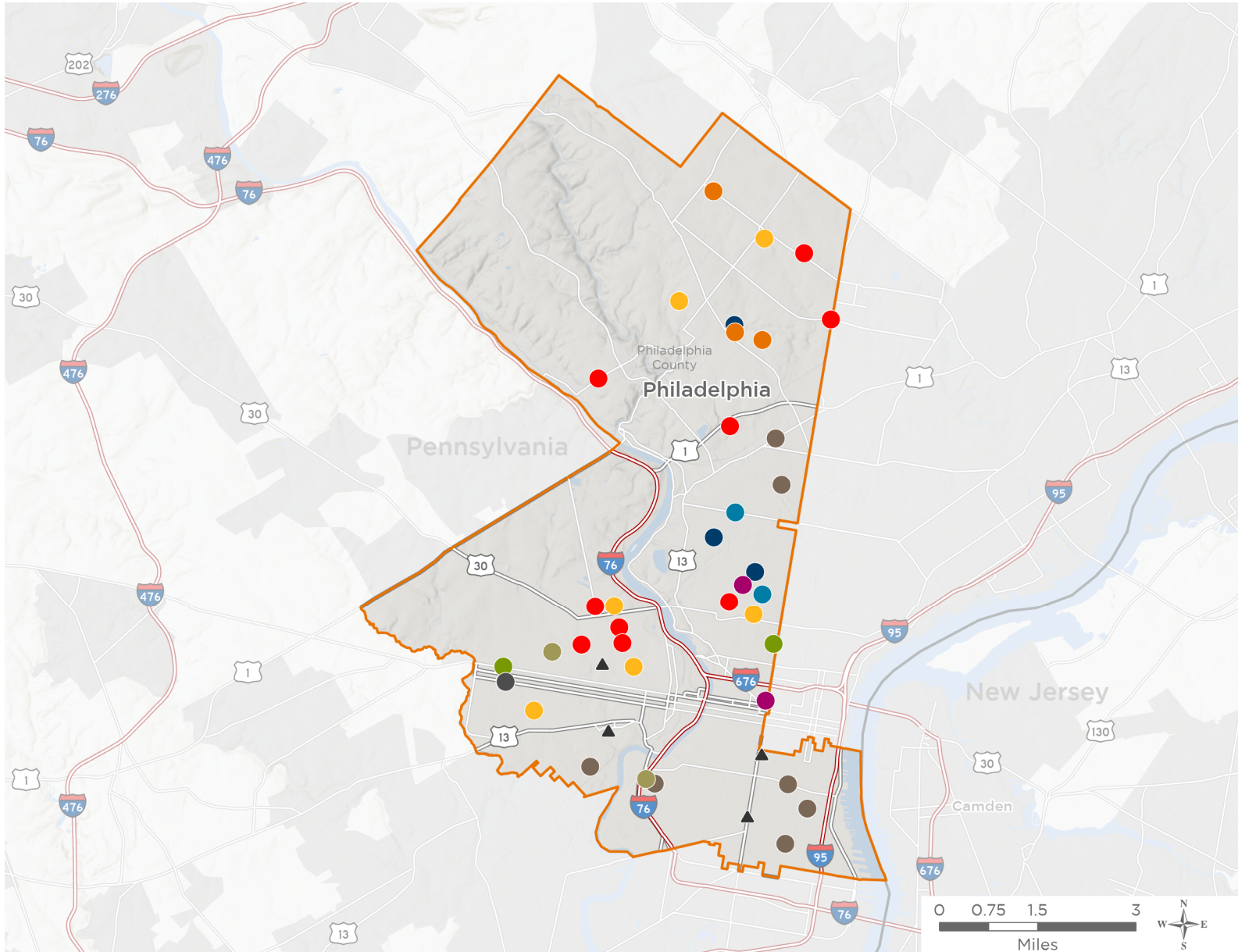
NATIONAL ASSOCIATION OF
Community Health Centers®

Representative Dwight Evans

119th United States Congress

Pennsylvania's **3RD** Congressional District

The 10 federally-funded health center organizations with a presence in Pennsylvania's 3rd Congressional District leverage **\$41,694,058** in federal investments to serve **231,907** patients.



41

**NUMBER OF DELIVERY SITES
IN CONGRESSIONAL DISTRICT**

- Federally-funded Delivery Site (each color represents one organization)
- Health Center Program Look-Alikes
- 119th Congressional District Boundaries
- County Boundaries
- Interstates
- Highways
- Populated Places
- Major Roads

Notes | Delivery sites represent locations of organizations funded by the federal Health Center Program. Health Center Program Look-Alikes are community-based health care providers that meet the requirements of the HRSA Health Center Program, but do not receive Health Center Program funding. Some locations may overlap due to scale or may otherwise not be visible when mapped. Federal investments represent the total funding from the federal Health Center Program to grantees with a presence in the state in 2023.

Sources | Federally-Funded Delivery Site Locations and Health Center Program Look-Alikes: data.HRSA.gov, November 2024. Health Center Patients and Federal Funding | 2024 Uniform Data System, Bureau of Primary Health Care, HRSA.



41

NUMBER OF DELIVERY SITES IN CONGRESSIONAL DISTRICT

(main organization in bold)

CITY OF PHILADELPHIA

Philadelphia District Health Center #5 | 1900 N 20th St Philadelphia, PA 19121-2217
Philadelphia District Health Center #9 | 131 E Cheltenham Ave Philadelphia, PA 19144
Strawberry Mansion Health Center | 2840 W Dauphin St Philadelphia, PA 19132-4627

COVENANT HOUSE INC

Covenant House Health and Dental Services | 8127 Stenton Ave Philadelphia, PA 19150-3530
Covenant House Health Services | 251 E Bringhurst St Philadelphia, PA 19144-1719
Covenant House Medical Center | 8125 Stenton Ave Philadelphia, PA 19150-3530
Tabor Kids Pediatric Mini Clinic | 57 E Armat St Philadelphia, PA 19144-2201

DELAWARE VALLEY COMMUNITY HEALTH, INC.

Fairmount Primary Care Center | 1412 Fairmount Ave Philadelphia, PA 19130-2908
Fairmount Primary Care Center at Horizon House | 5901 Market St Philadelphia, PA 19139-3117

GREATER PHILADELPHIA HEALTH ACTION INC

Al-Assist Behavioral Health Care | 1401 S 4th St Philadelphia, PA 19147-5948
Carl Moore Health Center | 1401 S 31st St Philadelphia, PA 19146-3506
GPHA - Cristo Rey Health Suite | 1717 W Allegheny Ave Philadelphia, PA 19132-1606
Hunting Park Health Center | 1999 W Hunting Park Ave Philadelphia, PA 19140-2828
Snyder Avenue Dental Center | 640 Snyder Ave Philadelphia, PA 19148-2419
Southeast Health Center | 800 Washington Ave Philadelphia, PA 19147-4717
Woodland Avenue Health Center | 5000 Woodland Ave Philadelphia, PA 19143-5137

PROJECT HOME

Hub of Hope | 1401 Arch St Philadelphia, PA 19102-1525
Project HOME Mobile | 2144 Cecil B Moore Ave Philadelphia, PA 19121-4014
Stephen Klein Wellness Center | 2144 Cecil B Moore Ave Philadelphia, PA 19121-4014

PUBLIC HEALTH MANAGEMENT CORP

Interim House West | 4108 Parkside Ave Philadelphia, PA 19104-1020
Interim House, Inc. | 333 W Upsal St Philadelphia, PA 19119-4010
PEC Nursing Center | 3939 Warren St Philadelphia, PA 19104-4642
PHMC Health Center on Cedar Avenue | 501 S 54th St Philadelphia, PA 19143-1900
Serenity Court | 1221 N 19th St Philadelphia, PA 19121-4901
Stenton Family Manor | 1300 E Tulpehocken St Philadelphia, PA 19138-1523

QUALITY COMMUNITY HEALTH CARE, INC.

Meade Family Health Center | 1600 N 18th St Philadelphia, PA 19121-3232
Quality Community Health Care, Inc. | 2501 W Lehigh Ave Philadelphia, PA 19132-3207



41

NUMBER OF DELIVERY SITES IN CONGRESSIONAL DISTRICT

(main organization in bold)

RESOURCES FOR HUMAN DEVELOPMENT, INC.

Abbottsford Falls Fp & Counseling | 4700 Wissahickon Ave BLDG D # 118 Philadelphia, PA 19144-4248

Building 21 High School | 6501 Limekiln Pike Philadelphia, PA 19138-3102

FPCN at Belmont Charter Network Academy Charter School | 907 N 41st St Philadelphia, PA 19104-1278

FPCN at Belmont Charter Network High School/Inquiry Primary School | 1301 Belmont Ave Philadelphia, PA 19104-1044

FPCN at Belmont Charter Network Primary/Middle School | 4030 Brown St Philadelphia, PA 19104-4844

FPCN at CB Community School | 4101 Freeland Ave Philadelphia, PA 19128-3509

FPCN at Mill Creek | 807 N 48th St Philadelphia, PA 19139-1854

FPCN at Philadelphia High School for Girls | 1400 W Olney Ave Philadelphia, PA 19141-2316

FPCN Wellness on Wheels Van | 4700 Wissahickon Ave STE 126 Philadelphia, PA 19144-4248

Vaux Bigger Picture High School | 2300 W Master St Philadelphia, PA 19121-4996

SAYRE HEALTH CENTER

Dr. BLJ Sayre Health Center Mobile Van | 5800 Walnut St Philadelphia, PA 19139-3836

The Sayre Health Center | 5800 Walnut St STE 121 Philadelphia, PA 19139-3836

SPECTRUM HEALTH SERVICES

Reed Street Health Center | 1325 S 33rd St STE 300 Philadelphia, PA 19146-3303

Spectrum Community Health Center | 5201 Haverford Ave Philadelphia, PA 19139-1401

HEALTH CENTER PROGRAM LOOK-ALIKES

Health Center Program Look-Alikes are community-based health care providers that meet the requirements of the HRSA Health Center Program, but do not receive Health Center Program funding.

CITY OF PHILADELPHIA

Philadelphia District Health Center #2 | 1700 S Broad St APT 201 Philadelphia, PA 19145-2340

Philadelphia District Health Center #3 | 555 S 43rd St Philadelphia, PA 19104-4408

Philadelphia District Health Center #4 | 4400 Haverford Ave Philadelphia, PA 19104-1399

MAZZONI CENTER

Bainbridge | 1348 Bainbridge St Philadelphia, PA 19147-1810