



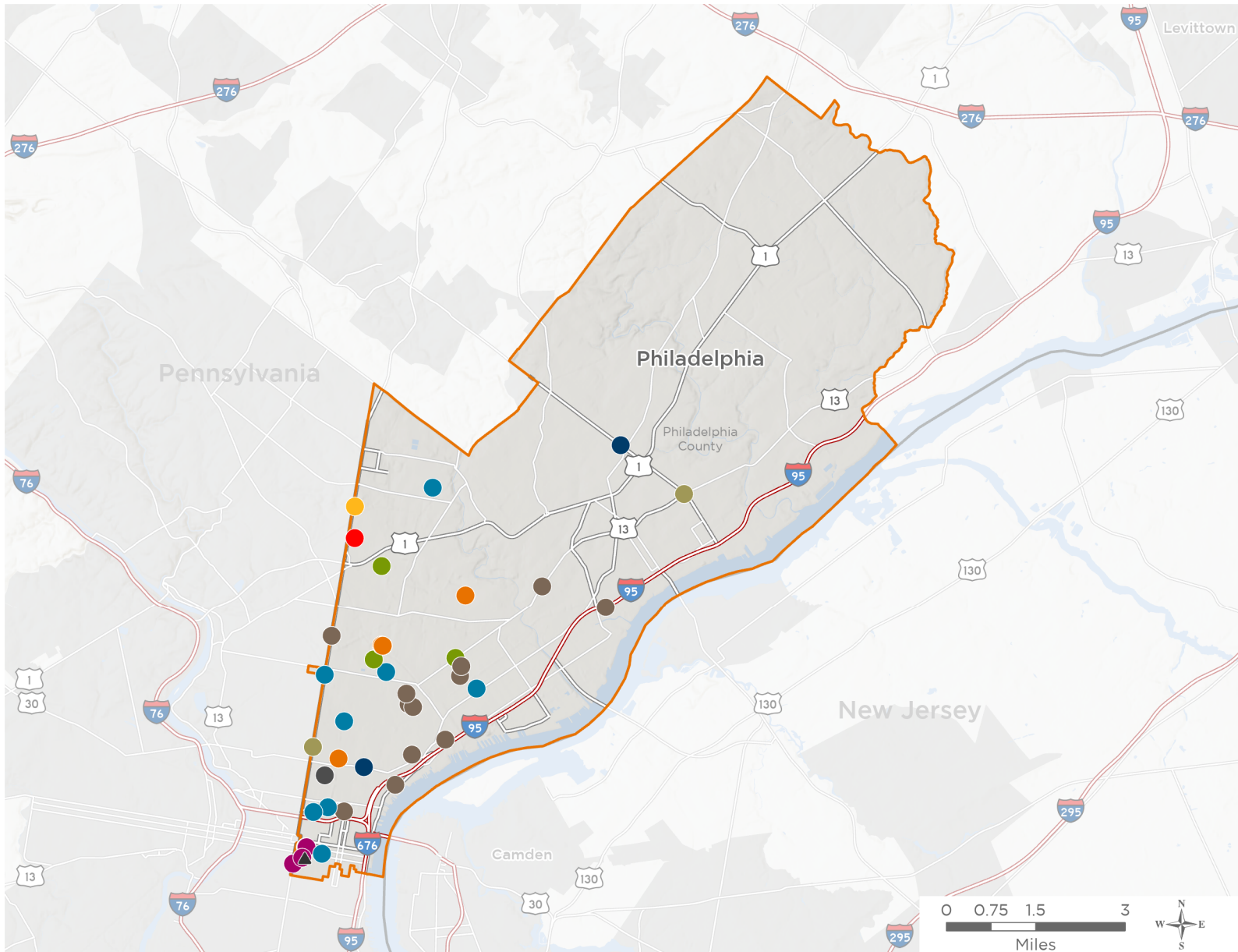
NATIONAL ASSOCIATION OF
Community Health Centers®

Representative Brendan Boyle

119th United States Congress

Pennsylvania's **2ND** Congressional District

The 10 federally-funded health center organizations with a presence in Pennsylvania's 2nd Congressional District leverage **\$41,588,298** in federal investments to serve **241,443** patients.



41

**NUMBER OF DELIVERY SITES
IN CONGRESSIONAL DISTRICT**

- Federally-funded Delivery Site (each color represents one organization)
- Health Center Program Look-Alikes
- 119th Congressional District Boundaries
- County Boundaries
- Interstates
- Highways
- Populated Places
- Major Roads

Notes | Delivery sites represent locations of organizations funded by the federal Health Center Program. Health Center Program Look-Alikes are community-based health care providers that meet the requirements of the HRSA Health Center Program, but do not receive Health Center Program funding. Some locations may overlap due to scale or may otherwise not be visible when mapped. Federal investments represent the total funding from the federal Health Center Program to grantees with a presence in the state in 2023.

Sources | Federally-Funded Delivery Site Locations and Health Center Program Look-Alikes: data.HRSA.gov, November 2024. Health Center Patients and Federal Funding | 2024 Uniform Data System, Bureau of Primary Health Care, HRSA.



41

NUMBER OF DELIVERY SITES IN CONGRESSIONAL DISTRICT

(main organization in bold)

CITY OF PHILADELPHIA

Philadelphia District Health Center #10 | 2230 Cottman Ave Philadelphia, PA 19149-1230

Philadelphia District Health Center #6 | 321 W Girard Ave Philadelphia, PA 19123-1531

DELAWARE VALLEY COMMUNITY HEALTH, INC.

Fairmount Primary Care Center at Girard Medical Center | 820 W Thompson St Philadelphia, PA 19122-4362

Maria de Los Santos Express Care | 400 W Allegheny Ave BLDG 3 Philadelphia, PA 19133-3614

Maria De Los Santos Health Ctr | 401 W Allegheny Ave Philadelphia, PA 19133-3644

Maria de los Santos Women's Health Center | 400 W Allegheny Ave Philadelphia, PA 19133-3614

Parkview Ob/Gyn Health Center | 841 E Hunting Park Ave Philadelphia, PA 19124-4800

ESPERANZA HEALTH CENTER, INC.

Esperanza Health Center - Fifth Street | 2940 N 5th St Philadelphia, PA 19133-2801

Esperanza Health Center - Kensington | 861 E Allegheny Ave Philadelphia, PA 19134-2401

Esperanza Health Center | 4417 N 6th St Philadelphia, PA 19140-2319

GREATER PHILADELPHIA HEALTH ACTION INC

Chinatown Medical Services - 2 | 432 N 6th St Philadelphia, PA 19123-4004

Frankford Avenue Health Center | 4510 Frankford Ave Philadelphia, PA 19124-3602

GPHA - Delaware Avenue Health Center | 1080 N Delaware Ave Philadelphia, PA 19125-4330

GPHA - Franklin Towne Charter Health Suite | 5301 Tacony St Philadelphia, PA 19137-2301

GPHA - Jules E. Mastbaum Health Suite | 3116 Frankford Ave Philadelphia, PA 19134-3827

GPHA - Kensington Health Sciences Health Suite | 2463 Emerald St Philadelphia, PA 19125

GPHA - Kensington Health Suite | 2501 Coral St Philadelphia, PA 19125

GPHA - Liguori Academy - Fortis Health Suite | 1952 E Allegheny Ave Philadelphia, PA 19134-3122

GPHA - Maritime Academy Charter Health Suite | 2700 E Huntingdon St Philadelphia, PA 19125-4038

GPHA - Penn Treaty Health Suite | 600 E Thompson St Philadelphia, PA 19125-3427

GPHA - Sankofa Freedom Academy Charter Health Suite | 2501 Kensington Ave Philadelphia, PA 19125-1321

GPHA, INC. Medical Suite at Temple's Dental School | 3223 N Broad St Philadelphia, PA 19140-5007

PHILADELPHIA FIGHT

Broad Street Ministry | 315 S Broad St Philadelphia, PA 19107-5213

Dental Clinic | 1207 Chestnut St, Floor 4 Philadelphia, PA 19107-4131

Diana Baldwin Clinic | 1211 Chestnut St STE 605 Philadelphia, PA 19107-4117

FIGHT Pediatric and Adolescent Medicine YHEP Clinic | 1207 Chestnut St FL 5 Philadelphia, PA 19107-4131

John Bell Clinic | 1207 Chestnut St Philadelphia, PA 19107-4131

Philadelphia FIGHT Jonathan Lax Treatment Center | 1233 Locust St Philadelphia, PA 19107-5414



NATIONAL ASSOCIATION OF
Community Health Centers®

Representative Brendan Boyle
119th United States Congress

Pennsylvania's **2ND** Congressional District

41

NUMBER OF DELIVERY SITES IN CONGRESSIONAL DISTRICT

(main organization in bold)

● **PROJECT HOME**

Pathways to Housing - PA | 5201 Old York Rd Philadelphia, PA 19141-2985

● **PUBLIC HEALTH MANAGEMENT CORP**

Congreso Health Center | 216 W Somerset St Philadelphia, PA 19133-3534

Mary Howard Health Center | 125 S 9th St Philadelphia, PA 19107-5125

Our Brother's Place | 907 Hamilton St Philadelphia, PA 19123-3815

PHMC Care Clinic | 1200 Callowhill St Philadelphia, PA 19123-3658

PHMC Health Connection | 1900 N 9th St Philadelphia, PA 19122-2024

PHMC Pathways to Recovery | 2301 E Allegheny Ave Philadelphia, PA 19134-4427

Rising Sun Health Center | 5675 N Front St Philadelphia, PA 19120-2719

Station House | 2601 N Broad St Philadelphia, PA 19132-4033

● **QUALITY COMMUNITY HEALTH CARE, INC.**

Cooke Family Health Center | 1300 W Loudon St Philadelphia, PA 19141-2603

● **RESOURCES FOR HUMAN DEVELOPMENT, INC.**

11th Street Fam Hlth Svcs Drexel | 850 N 11th St Philadelphia, PA 19123-1957

● **SPECTRUM HEALTH SERVICES**

Broad Street Health Center | 1415 N Broad St Philadelphia, PA 19122-3327

Cottman Avenue Health Center | 7300 Frankford Ave Philadelphia, PA 19136-4305

▲ **HEALTH CENTER PROGRAM LOOK-ALIKES**

Health Center Program Look-Alikes are community-based health care providers that meet the requirements of the HRSA Health Center Program, but do not receive Health Center Program funding.

MAZZONI CENTER

Washington West | 1201 Locust St Philadelphia, PA 19107-5409