



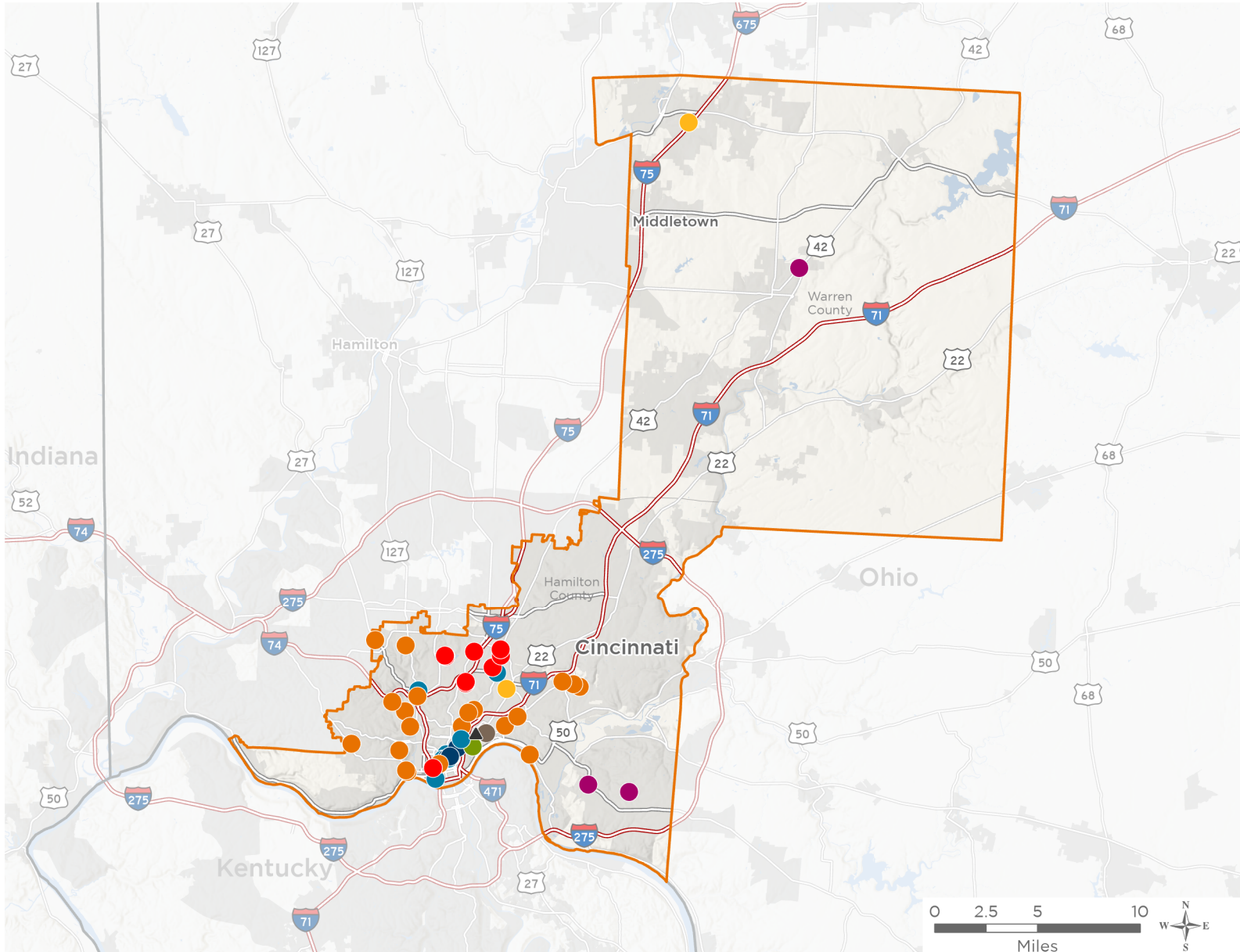
NATIONAL ASSOCIATION OF
Community Health Centers®

Representative Greg Landsman

119th United States Congress

Ohio's **1ST** Congressional District

The 8 federally-funded health center organizations with a presence in Ohio's 1st Congressional District leverage **\$26,728,662** in federal investments to serve **204,032** patients.



50

**NUMBER OF DELIVERY SITES
IN CONGRESSIONAL DISTRICT**

- Federally-funded Delivery Site (each color represents one organization)
- Health Center Program Look-Alikes
- 119th Congressional District Boundaries
- County Boundaries
- Interstates
- Highways
- Populated Places
- Major Roads

Notes | Delivery sites represent locations of organizations funded by the federal Health Center Program. Health Center Program Look-Alikes are community-based health care providers that meet the requirements of the HRSA Health Center Program, but do not receive Health Center Program funding. Some locations may overlap due to scale or may otherwise not be visible when mapped. Federal investments represent the total funding from the federal Health Center Program to grantees with a presence in the state in 2023.

Sources | Federally-Funded Delivery Site Locations and Health Center Program Look-Alikes: data.HRSA.gov, November 2024. Health Center Patients and Federal Funding | 2024 Uniform Data System, Bureau of Primary Health Care, HRSA.



50

NUMBER OF DELIVERY SITES IN CONGRESSIONAL DISTRICT

(main organization in bold)

● **CHRISTIAN COMMUNITY HEALTH SERVICES**

Crossroad Health Center - Taft | 270 Southern Ave Cincinnati, OH 45219-3023

Crossroad Health Center | 5 E Liberty St Cincinnati, OH 45202-8202

Rothenberg Preparatory Academy School-Based Health Center | 241 E Clifton Ave Cincinnati, OH 45202-8905

● **CITY OF CINCINNATI**

Academy of World Languages | 2030 Fairfax Ave Cincinnati, OH 45207-1943

Aiken High School | 5641 Belmont Ave Cincinnati, OH 45224-3101

Ambrose H. Clement | 3101 Burnet Ave Cincinnati, OH 45229-3014

Ambrose H. Clement Health Center (Avondale) | 3559 Reading Rd STE 101 Cincinnati, OH 45229-2689

Bobbie Sterne Health Center (formerly Elm Street) | 1525 Elm St Cincinnati, OH 45202-6957

Braxton F. Cann Memorial Medical Center | 5818 Madison Rd Cincinnati, OH 45227-1708

Crest Smile Shoppe | 612 Rockdale Ave Cincinnati, OH 45229-2919

Deaconess Health Check at Western Hills | 2146 Ferguson Rd Cincinnati, OH 45238-3720

Ethel M. Taylor Academy | 1930 Fricke Rd Cincinnati, OH 45225-1200

John P. Parker | 5051 Anderson Pl Cincinnati, OH 45227-1601

Millvale at Hopple Street Health Center | 2750 Beekman St Cincinnati, OH 45225-2049

Mt. Airy | 5730 Colerain Ave Cincinnati, OH 45239-6714

Northside Health Center | 3917 Spring Grove Ave Cincinnati, OH 45223-3302

Oyler Community Learning Center | 2121 Hatmaker St Cincinnati, OH 45204-1947

Price Hill Health Center | 2136 W 8th St Cincinnati, OH 45204-2052

Riverview East | 3555 Kellogg Ave Cincinnati, OH 45226-2180

Roberts Paideia | 1702 Grand Ave Cincinnati, OH 45214-1502

Roll Hill Academy | 2411 Baltimore Ave Cincinnati, OH 45225-1001

Taft High School | 420 Ezzard Charles Dr Cincinnati, OH 45214-2806

The Children's Home of Cincinnati | 5051 Duck Creek Rd Cincinnati, OH 45227-1440

Withrow Community Learning Center | 2520 Madison Rd Cincinnati, OH 45208-1257

● **HEALTH POINT FAMILY CARE, INC.**

HealthPoint - First Step Home | 2203 Fulton Ave Cincinnati, OH 45206-2504

● **HEALTHCARE CONNECTION INC**

Greater Cincinnati Behavioral Health Services | 1501 Madison Rd Cincinnati, OH 45206-1706

● **HEALTHSOURCE OF OHIO INC**

HealthSource Anderson Ob/Gyn | 8000 5 Mile Rd STE 207 Cincinnati, OH 45230-2187

HealthSource Lebanon | 1231 Columbus Ave UNIT A1 Lebanon, OH 45036-8196

HealthSource Mt. Washington | 6131 Campus Ln Cincinnati, OH 45230-1601



50

NUMBER OF DELIVERY SITES IN CONGRESSIONAL DISTRICT

(main organization in bold)

● **TALBERT HOUSE HEALTH CENTER D/B/A CENTERPOINT HEALTH**

Centerpoint Health Dental Franklin | 333 Conover Dr STE D Franklin, OH 45005-1900

Centerpoint Health Medical Franklin | 333 Conover Dr STE B Franklin, OH 45005-1900

Centerpoint Norwood SBHC | 2020 Sherman Ave STE 202 Cincinnati, OH 45212-2616

● **THE CINCINNATI HEALTH NETWORK, INC.**

Bethany House | 4769 Reading Rd Cincinnati, OH 45237-6107

Caracole Clinic | 4138 Hamilton Ave Cincinnati, OH 45223-2293

Center For Respite Care | 1615 Republic St Cincinnati, OH 45202-6464

Cincinnati Health Network, Inc. | 40 E McMicken Ave Cincinnati, OH 45202-6625

Cincinnati Mobile Dental Care | 40 E McMicken Ave Cincinnati, OH 45202-6625

Cincinnati Mobile Health Care | 1525 Elm St Cincinnati, OH 45202-6957

Enabling Servies Program- Freestore Foodbank | 112 E Liberty St Cincinnati, OH 45202-6510

SHELTERHOUSE-Barron Center for Men | 411 Gest St Cincinnati, OH 45203-1730

SHELTERHOUSE-Hatton Center for Women | 2499 Reading Rd Cincinnati, OH 45202-1464

● **WINTON HILLS MED & HEALTH CENTER**

Bond Hill Academy Elementary | 1510 California Ave Cincinnati, OH 45237-5621

Elmwood Place Elementary SBHC | 400 Maple St Elmwood Place, OH 45216-2128

St. Bernard- Elmwood Place Elementary SBHC | 4515 Tower Ave Cincinnati, OH 45217-1723

St. Bernard Elmwood Place HS SBH | 4615 Tower Ave Cincinnati, OH 45217-1724

WinMed-Cincinnati-Hamilton County Community Action Agency | 1740 Langdon Farm Rd Cincinnati, OH 45237-1157

WinMed City West | 1019 Linn St Cincinnati, OH 45203-1314

Winton Hills Academy Elementary | 5300 Winneste Ave Cincinnati, OH 45232-1133

Winton Hills Medical And Health Center, Inc. | 5275 Winneste Ave Cincinnati, OH 45232-1130

Woodward Career Technical High School | 7005 Reading Rd Cincinnati, OH 45237-3802

▲ **HEALTH CENTER PROGRAM LOOK-ALIKES**

Health Center Program Look-Alikes are community-based health care providers that meet the requirements of the HRSA Health Center Program, but do not receive Health Center Program funding.

EQUITAS HEALTH INC

Equitas Health Cincinnati | 2805 Gilbert Ave Cincinnati, OH 45206-1210