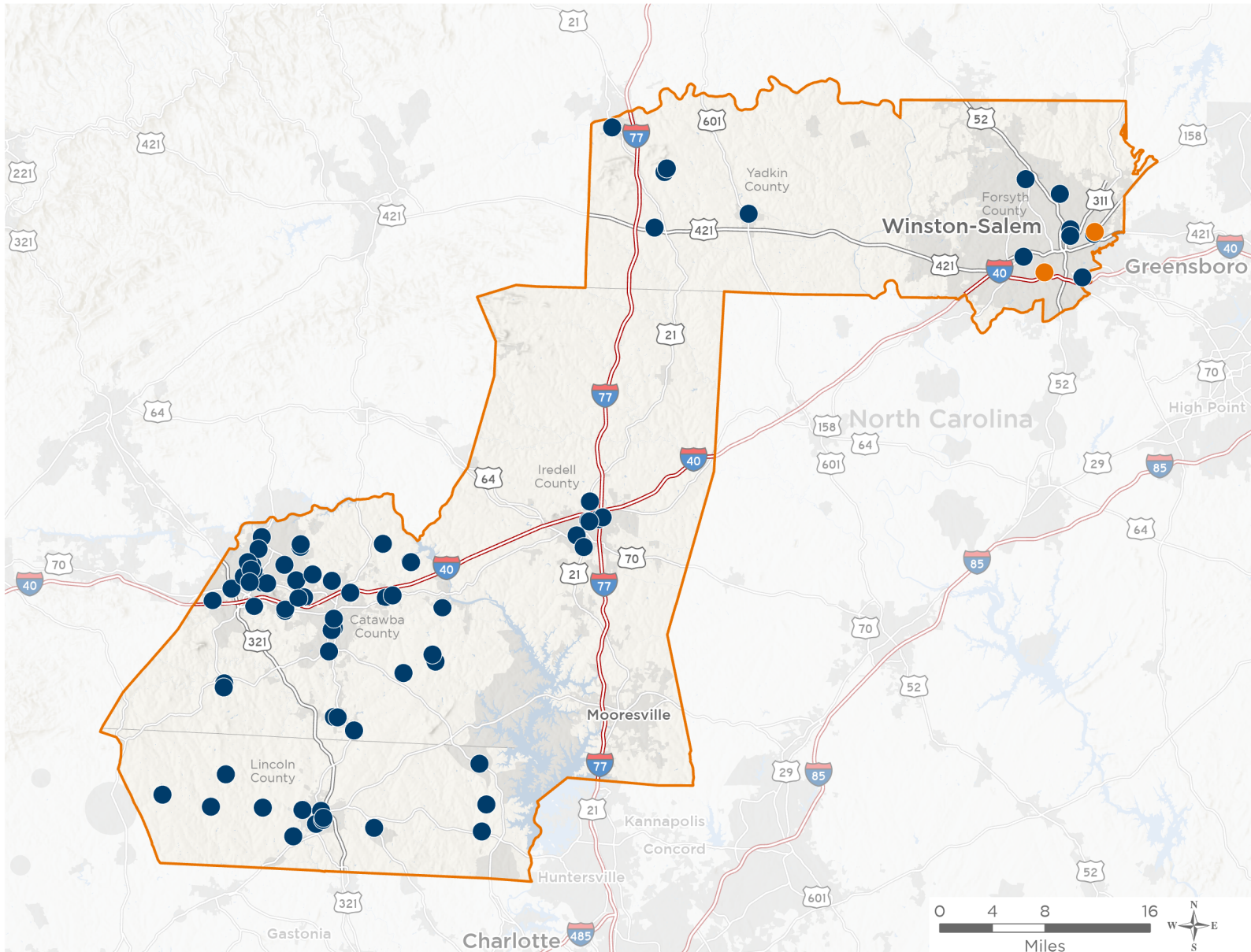


The 2 federally-funded health center organizations with a presence in North Carolina's 10th Congressional District leverage **\$13,135,256** in federal investments to serve **102,616** patients.



82 NUMBER OF DELIVERY SITES
IN CONGRESSIONAL DISTRICT

-  Federally-funded Delivery Site (each color represents one organization)
-  Health Center Program Look-Alikes
-  119th Congressional District Boundaries
-  County Boundaries
-  Interstates
-  Highways
-  Populated Places
-  Major Roads

Notes | Delivery sites represent locations of organizations funded by the federal Health Center Program. Health Center Program Look-Alikes are community-based health care providers that meet the requirements of the HRSA Health Center Program, but do not receive Health Center Program funding. Some locations may overlap due to scale or may otherwise not be visible when mapped. Federal investments represent the total funding from the federal Health Center Program to grantees with a presence in the state in 2023.

Sources | Federally-Funded Delivery Site Locations and Health Center Program Look-Alikes: data.HRSA.gov, November 2024. Health Center Patients and Federal Funding | 2024 Uniform Data System, Bureau of Primary Health Care, HRSA.



82

**NUMBER OF DELIVERY SITES IN
CONGRESSIONAL DISTRICT**

(main organization in bold)

● GASTON FAMILY HEALTH SERVICES, INC.

- Catawba Valley Family Medicine - Graystone | 3511 Graystone Pl Conover, NC 28613
- Catawba Valley Family Medicine - Claremont | 3114 W Main St Claremont, NC 28610-9609
- Catawba Valley Family Medicine - Maiden | 137 Island Ford Rd Maiden, NC 28650-8735
- Catawba Valley Family Medicine - Northeast Hickory | 2365 Springs Rd NE Hickory, NC 28601-3067
- Iredell Psychiatry | 766 Hartness Rd Statesville, NC 28677-3479
- Kintegra at A Woman's View | 915 Tate Blvd SE Hickory, NC 28602-4042
- Kintegra at Arndt Middle School | 34th Street Dr NE Hickory, NC 28601-7700
- Kintegra at Balls Creek Elementary | 2620 Balls Creek Rd Newton, NC 28658-8109
- Kintegra at Bandys High | 5040 E Bandys Xrd Catawba, NC 28609
- Kintegra at Battleground Elementary | 301 Jeb Seagle Dr Lincolnton, NC 28092-2168
- Kintegra at Bunker Hill High | 4675 Oxford School Rd Claremont, NC 28610-9468
- Kintegra at Catawba Rosenwald Education Center | 403 6th Ave SW Catawba, NC 28609-7811
- Kintegra at Catawba Springs Elementary | 206 N Little Egypt Rd Denver, NC 28037-8015
- Kintegra at Catawba Valley Community College | 2550 US Highway 70 SE Ste Hickory, NC 28602-8302
- Kintegra at Catawba Women's Center | 1501 Tate Blvd SE Hickory, NC 28602-1384
- Kintegra at Challenger High School | 2550 US Highway 70 SE Hickory, NC 28602-8302
- Kintegra at Claremont Elementary | 3384 E Main St Claremont, NC 28610-8665
- Kintegra at Discovery High | 301 W 18th St Newton, NC 28658-2927
- Kintegra at Fred T Foard High | 3407 Plateau Rd Newton, NC 28658-8809
- Kintegra at G E Massey Elementary | 130 Newbold St Lincolnton, NC 28092-3906
- Kintegra at Grandview Middle | 451 Catawba Valley Blvd Hickory, NC 28602-9631
- Kintegra at Hickory Career & Arts Magnet | 409 8th Ave NE Hickory, NC 28601-3943
- Kintegra at Hickory High | 1234 3rd St NE Hickory, NC 28601-2605
- Kintegra at Iredell County Health Department | 318 Turnersburg Hwy Statesville, NC 28625-2798
- Kintegra at Iron Station Elementary | 4207 E Highway 27 Iron Station, NC 28080-8701
- Kintegra at Jacob's Fork Middle School | 3431 Plateau Rd Newton, NC 28658-8809
- Kintegra at Jenkins Elementary | 3750 N Center St Hickory, NC 28601-8089
- Kintegra at Jonesville Elementary | 101 Cedarbrook Rd Jonesville, NC 28642-2405
- Kintegra at Longview Elementary | 737 12th St SW Hickory, NC 28602-3120
- Kintegra at Love Memorial Elementary | 1463 Love Memorial School Rd Lincolnton, NC 28092-7091
- Kintegra at Maiden High | 600 W Main St Maiden, NC 28650-1146
- Kintegra at Maiden Middle School | 518 N C Ave Maiden, NC 28650-1171
- Kintegra at Mill Creek Middle School | 1041 Shiloh Rd Claremont, NC 28610-9202
- Kintegra at Mitchell Community College | 500 W Broad St Statesville, NC 28677-5264



82

NUMBER OF DELIVERY SITES IN CONGRESSIONAL DISTRICT

(main organization in bold)

- Kintegra at Newton-Conover Middle | 873 Northern Dr NW Conover, NC 28613-6513
- Kintegra at Newton Conover High | 338 W 15th St Newton, NC 28658-2906
- Kintegra at Norris S Childers Elementary | 2595 Rock Dam Rd Lincolnton, NC 28092-6803
- Kintegra at North Brook Elementary | 642 Highway 274 Vale, NC 28168-7435
- Kintegra at North Newton Elementary | 221 W 26th St Newton, NC 28658-2821
- Kintegra at Northview Middle | 302 28th Ave NE Hickory, NC 28601-1116
- Kintegra at Oakwood Elementary | 366 4th St NW Hickory, NC 28601-4920
- Kintegra at Oxford Elementary | 5915 Oxford School Rd Claremont, NC 28610-8112
- Kintegra at Piedmont HealthCare Womens Center | 1804 Davie Ave Statesville, NC 28677-3524
- Kintegra at Riverbend Middle School | 4670 Oxford School Rd Claremont, NC 28610-9468
- Kintegra at Rock Springs Elementary | 3633 N Nc 16 Business Hwy Denver, NC 28037-8268
- Kintegra at S Ray Lowder Elementary | 350 Kennedy Dr Lincolnton, NC 28092-3216
- Kintegra at Shuford Elementary | 810 Hunsucker Dr NE Conover, NC 28613-7578
- Kintegra at South Newton Elementary | 306 W I St Newton, NC 28658-3534
- Kintegra at Southwest Elementary | 1580 32nd St SW Hickory, NC 28602-4633
- Kintegra at St James Elementary | 1774 Saint James Church Rd Denver, NC 28037-7515
- Kintegra at St Stephens High | 3205 34th Street Dr NE Hickory, NC 28601-7702
- Kintegra at St. Stephens Elementary | 684 30th St NE Conover, NC 28613-8254
- Kintegra at Starmount High | 2516 Longtown Road Boonville, NC 27011-8862
- Kintegra at Starmount Middle | 2626 Longtown Rd Boonville, NC 27011-8864
- Kintegra at Union Elementary | 4875 Reepsville Rd Vale, NC 28168-9771
- Kintegra at Viewmont Elementary | 21 16th Ave NW Hickory, NC 28601-2533
- Kintegra at Webb A. Murray Elementary | 3901 Section House Rd Hickory, NC 28601-9392
- Kintegra at West Lincoln Middle | 260 Shoal Rd Lincolnton, NC 28092-0773
- Kintegra at West Yadkin Elementary | 4432 West Old Us 421 Hamptonville, NC 27020
- Kintegra at Yadkinville Elementary | 305 N State St Yadkinville, NC 27055-5245
- Kintegra Behavioral Health - Hickory | 858 2nd St NE Hickory, NC 28601-3877
- Kintegra Behavioral Health - Statesville | 1450 Fern Creek Drive Statesville, NC 28625-9376
- Kintegra Family Dentistry - Hickory | 3070 11th Avenue Dr SE Hickory, NC 28602-8336
- Kintegra Family Dentistry - Lincolnton | 111 Doctors Park Lincolnton, NC 28092-4407
- Kintegra Family Medicine - Hickory | 133 1st Ave SE Hickory, NC 28602-3005
- Kintegra Family Medicine - Lincolnton | 212 Gamble Dr Lincolnton, NC 28092-4421
- Kintegra Family Medicine - Statesville | 1022 Shelton Ave Statesville, NC 28677-6826
- Kintegra Mobile Chiropractic | 1022 Shelton Ave Statesville, NC 28677-6826
- Kintegra Mobile Dentistry Unit North | 518 Brookdale Dr Statesville, NC 28677-4108
- Kintegra Mobile Dentistry Unit South | 212 Gamble Dr Lincolnton, NC 28092-4421
- Kintegra Mobile Optometry | 1022 Shelton Ave Statesville, NC 28677-6826
- Kintegra Pediatric Medicine and Kintegra Family Dentistry -Statesville | 518 Brookdale Dr Statesville, NC 28677-4108



NATIONAL ASSOCIATION OF
Community Health Centers®

Representative Pat Harrigan
119th United States Congress

North Carolina's **10TH** Congressional District

82

NUMBER OF DELIVERY SITES IN CONGRESSIONAL DISTRICT

(main organization in bold)

Kintegra/SHA at Ashley Wellness Center | 1647 NE Ashley School Cir Winston Salem, NC 27105-5444

Kintegra/SHA at Hanes Magnet School | 2355 Pleasant St Winston Salem, NC 27107-4334

Kintegra/SHA at Winston-Salem Prep Academy | 1215 N Cameron Ave Winston Salem, NC 27101-1816

Kintegra/SHA at Mineral Springs | 4555 Ogburn Ave Winston Salem, NC 27105-2726

Kintegra/SHA at Moore Elementary | 451 Knollwood St Winston Salem, NC 27103-3438

Kintegra/SHA at North Forsyth | 5705 Shattalon Dr Winston Salem, NC 27105-1332

Kintegra/SHA at Petree Elementary | 3815 Old Greensboro Road Winston Salem, NC 27101-2037

Kintegra/SHA Mobile Medical Unit | 4555 Ogburn Ave Winston Salem, NC 27105-2726

● **UNITED HEALTH CENTERS**

United Health Centers @ Commons | 1430 Felicity Ln Winston Salem, NC 27101

United Health Centers @Peters Creek Parkway | 2101 Peters Creek Pkwy Winston Salem, NC 27127-3726