



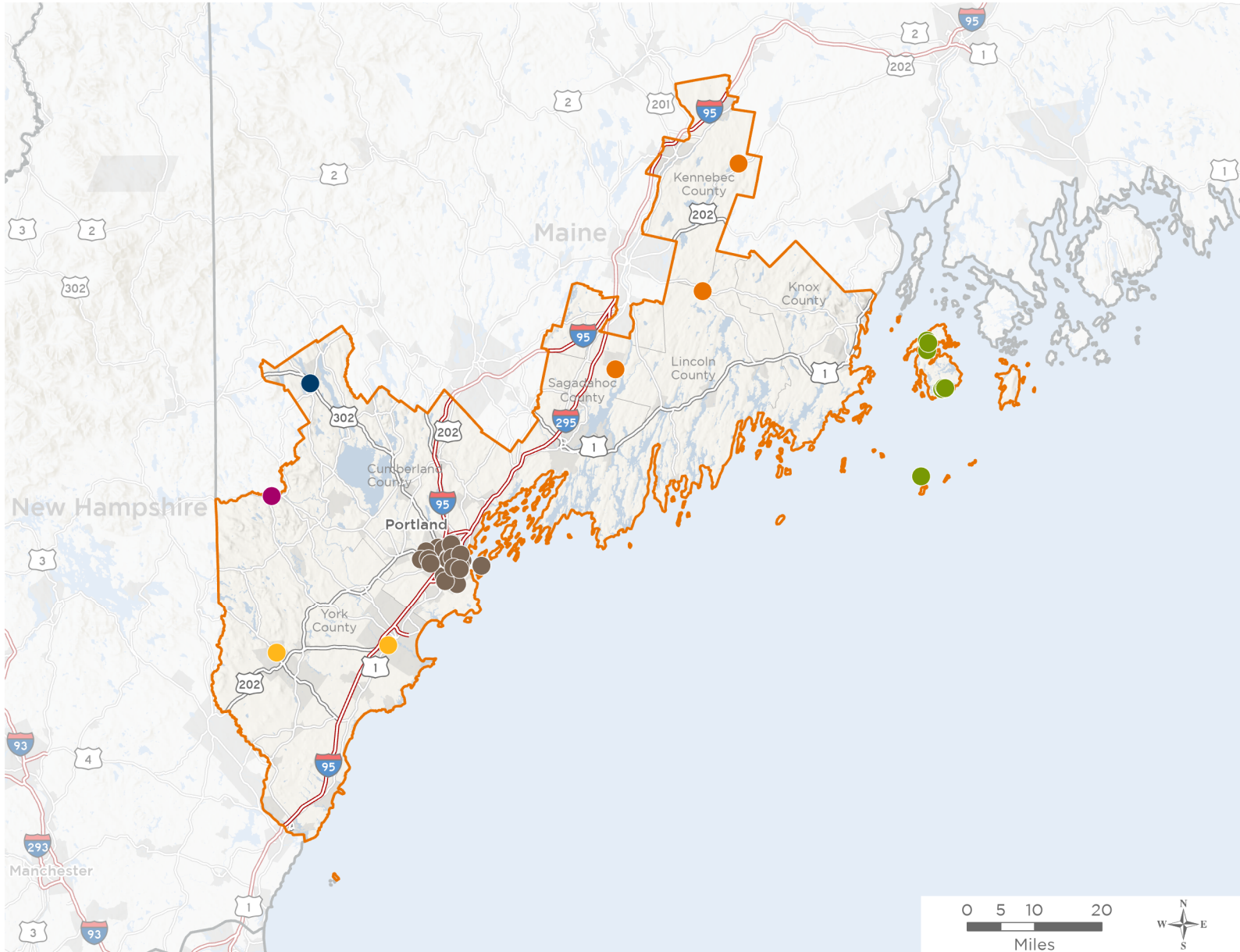
NATIONAL ASSOCIATION OF
Community Health Centers®

Representative Chellie Pingree

119th United States Congress

Maine's **1ST** Congressional District

The 6 federally-funded health center organizations with a presence in Maine's 1st Congressional District leverage **\$14,589,110** in federal investments to serve **62,691** patients.



50

**NUMBER OF DELIVERY SITES
IN CONGRESSIONAL DISTRICT**

- Federally-funded Delivery Site (each color represents one organization)
- Health Center Program Look-Alikes
- 119th Congressional District Boundaries
- County Boundaries
- Populated Places
- Interstates
- Highways
- Major Roads

Notes | Delivery sites represent locations of organizations funded by the federal Health Center Program. Health Center Program Look-Alikes are community-based health care providers that meet the requirements of the HRSA Health Center Program, but do not receive Health Center Program funding. Some locations may overlap due to scale or may otherwise not be visible when mapped. Federal investments represent the total funding from the federal Health Center Program to grantees with a presence in the state in 2023.

Sources | Federally-Funded Delivery Site Locations and Health Center Program Look-Alikes: data.HRSA.gov, November 2024. Health Center Patients and Federal Funding | 2024 Uniform Data System, Bureau of Primary Health Care, HRSA.



50

NUMBER OF DELIVERY SITES IN CONGRESSIONAL DISTRICT

(main organization in bold)

DFD RUSSELL MEDICAL CENTER INC

DFD Russell Medical Center - Bridgton | 25 Hospital Dr Bridgton, ME 04009-1167

HEALTH REACH COMMUNITY HEALTH CENTERS

Lovejoy Health Center | 7 School St STE 1 Albion, ME 04910-6501

Richmond Area Health Center | 24 Gardiner St Richmond, ME 04357-1347

Sheepscot Valley Health Center | 47 Main St Whitefield, ME 04353-3142

ISLANDS COMMUNITY MEDICAL SERVICES INC

Islands Community Medical Center Annex | 25 Medical Center Loop Vinalhaven, ME 04863-4119

Islands Community Medical Services | 15 Medical Center Loop Vinalhaven, ME 04863-4119

Matinicus Via Telemedicine | Sunbean Docked @ Matinicus WHF Matinicus, ME 04851

North Haven Community School | 93 Pulpit Harbor Rd North Haven, ME 04853

North Haven Medical Clinic | 135 Main St North Haven, ME 04853-3320

North Haven PT at Southern Harbor | 12 Pulpit Harbor Rd North Haven, ME 04853-3104

Vinalhaven Eldercare Services | 17 Beaver Dam Rd Vinalhaven, ME 04863-3915

Vinalhaven School | 22 Arcola Ln Vinalhaven, ME 04863-4014

PORTLAND COMMUNITY HEALTH CENTER

Greater Portland Health at 100 Brickhill Avenue | 100 Brickhill Ave South Portland, ME 04106-1999

Greater Portland Health at 180 Park Avenue | 180 Park Ave Portland, ME 04102-2957

Greater Portland Health at 211 Cumberland Avenue | 211 Cumberland Ave Portland, ME 04101-4935

Greater Portland Health at 234 Oxford Street | 234 Oxford St Portland, ME 04101-3029

Greater Portland Health at 295 Park Avenue | 295 Park Ave Portland, ME 04102

Greater Portland Health at 59 Riverton Drive | 59 Riverton Dr Portland, ME 04103-1050

Greater Portland Health at 63 Preble Street | 63 Preble St Portland, ME 04101-3014

Greater Portland Health at 654 Riverside Street | 654 Riverside St Portland, ME 04103-1086

Greater Portland Health at 85 Taft Avenue | 85 Taft Ave Portland, ME 04102

Greater Portland Health at 934 Congress Street | 934 Congress St Portland, ME 04102-3032

Greater Portland Health at Amanda C. Rowe Elementary School | 23 Orono Rd Portland, ME 04102-1106

Greater Portland Health at Canal Elementary School | 102 Glenwood Ave Westbrook, ME 04092-4078

Greater Portland Health at Casco Bay High School | 196 Allen Ave Portland, ME 04103-3711

Greater Portland Health at Catherine Morrill Day Nursery | 96 Danforth St Portland, ME 04101-4523

Greater Portland Health at Congin Elementary School | 410 Bridge St Westbrook, ME 04092-2435

Greater Portland Health at Deering High School | 370 Stevens Ave Portland, ME 04103-2607

Greater Portland Health at East End School | 195 North St Portland, ME 04101-2734

Greater Portland Health at Gerald E. Talbot Community School | 1600 Forest Ave Portland, ME 04103-1314

Greater Portland Health at Harrison Lyseth Elementary School | 175 Auburn St Portland, ME 04103-2131

Greater Portland Health at King Middle School | 92 Deering Ave Portland, ME 04102-2901



NATIONAL ASSOCIATION OF
Community Health Centers®

Representative Chellie Pingree
119th United States Congress

Maine's **1ST** Congressional District

50

NUMBER OF DELIVERY SITES IN CONGRESSIONAL DISTRICT

(main organization in bold)

Greater Portland Health at Lincoln Middle School | 522 Stevens Ave Portland, ME 04103-2611
Greater Portland Health at Longfellow Elementary School | 432 Stevens Ave Portland, ME 04103-2607
Greater Portland Health at Lyman Moore Middle School | 171 Auburn St Portland, ME 04103-2131
Greater Portland Health at Ocean Avenue Elementary School | 150 Ocean Ave Portland, ME 04103-5746
Greater Portland Health at Peaks Island School | 4 Church Ave Portland, ME 04108-1157
Greater Portland Health at Portland High School | 284 Cumberland Ave Portland, ME 04101-4927
Greater Portland Health at Presumpscot Elementary School | 69 Presumpscot St Portland, ME 04103-5201
Greater Portland Health at Reiche Community School | 166 Brackett St Portland, ME 04102
Greater Portland Health at Saccarappa Elementary School | 110 Huntress Ave Westbrook, ME 04092-2698
Greater Portland Health at South Portland High School | 637 Highland Ave South Portland, ME 04106
Greater Portland Health at South Portland Middle School | 120 Wescott Rd South Portland, ME 04106-3498
Greater Portland Health at Westbrook High School | 125 Stroudwater St Westbrook, ME 04092-4045
Greater Portland Health at Westbrook Middle School | 471 Stroudwater St Westbrook, ME 04092-4070
Mobile Van #1 | 295 Park Ave Portland, ME 04102
St. Elizabeth's Child Development Center | 87 High St Portland, ME 04101-3895

● **SACOPEE VALLEY HEALTH CENTER**

Sacopee Valley Health Center | 202 Maple St UNIT E Cornish, ME 04020-3147

● **YORK COUNTY COMMUNITY ACTION CORPORATION**

Nasson Health Care - Biddeford | 357 Elm St Biddeford, ME 04005-3022
Nasson Health Care - Springvale | 15 Oak St Springvale, ME 04083