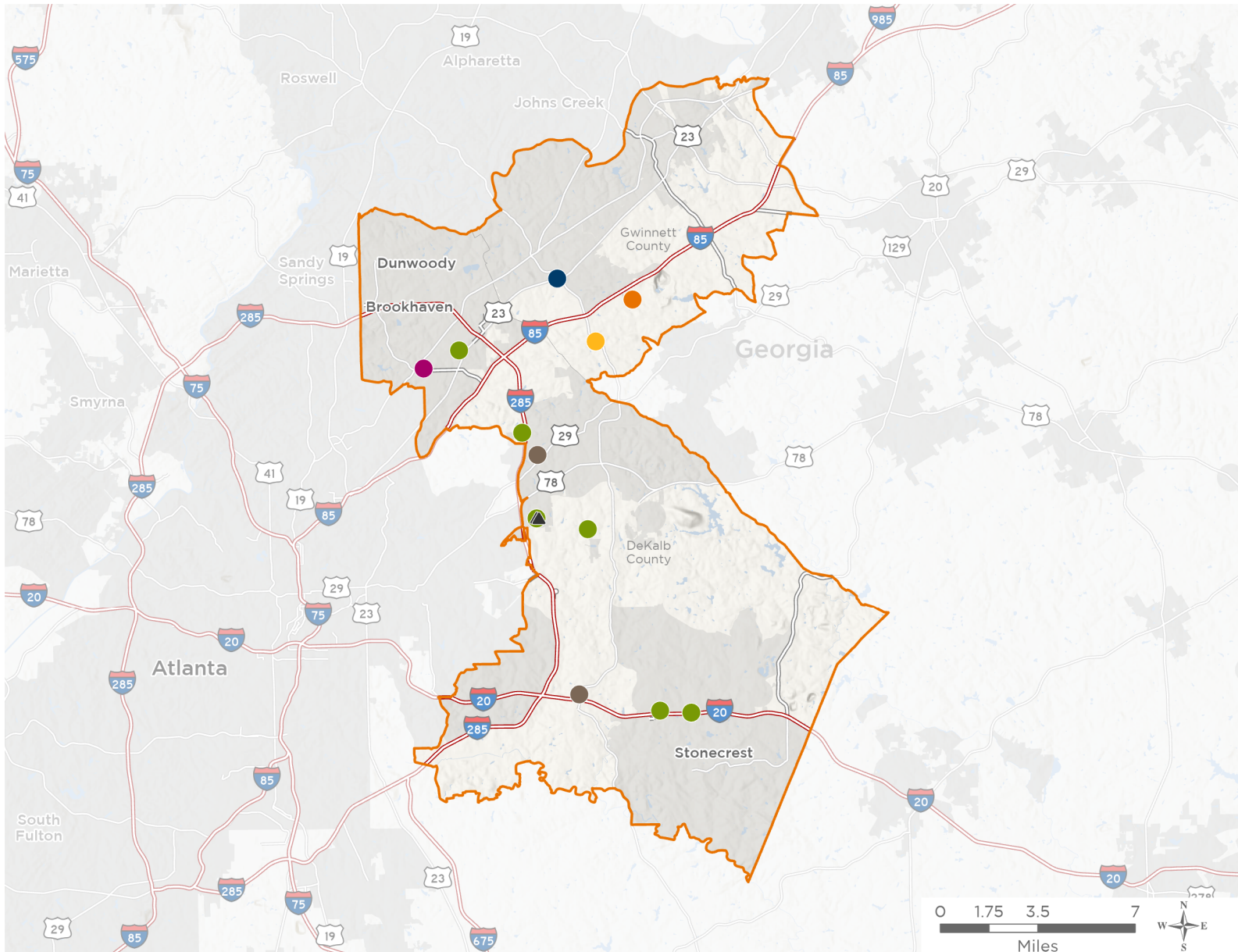




The 6 federally-funded health center organizations with a presence in Georgia's 4th Congressional District leverage **\$24,697,501** in federal investments to serve **102,574** patients.



- Federally-funded Delivery Site (each color represents one organization)
- Health Center Program Look-Alikes
- 119th Congressional District Boundaries
- County Boundaries
- Interstates
- Highways
- Populated Places
- Major Roads

**16**

**NUMBER OF DELIVERY SITES  
IN CONGRESSIONAL DISTRICT**

Notes | Delivery sites represent locations of organizations funded by the federal Health Center Program. Health Center Program Look-Alikes are community-based health care providers that meet the requirements of the HRSA Health Center Program, but do not receive Health Center Program funding. Some locations may overlap due to scale or may otherwise not be visible when mapped. Federal investments represent the total funding from the federal Health Center Program to grantees with a presence in the state in 2023.

Sources | Federally-Funded Delivery Site Locations and Health Center Program Look-Alikes: data.HRSA.gov, November 2024. Health Center Patients and Federal Funding | 2024 Uniform Data System, Bureau of Primary Health Care, HRSA.



**16**

## NUMBER OF DELIVERY SITES IN CONGRESSIONAL DISTRICT

(main organization in bold)

### ● **CENTER FOR PAN ASIAN COMMUNITY SERVICES, INC.**

CPACS Cosmo Health Center Behavioral Health | 6185 Buford Hwy STE G Peachtree Corners, GA 30071-2350  
CPACS Cosmo Health Center Dental | 6185 Buford Hwy STE A Peachtree Corners, GA 30071-2302  
CPACS Cosmo Health Center Primary Care | 6185 Buford Hwy BLDG B Peachtree Corners, GA 30071-2350  
CPACS Cosmo Health Center Primary Care | 6185 Buford Hwy Peachtree Corners, GA 30071-2350

### ● **FOUR CORNERS PRIMARY CARE CENTERS, INC.**

Four Corners Primary Care Centers | 5300 Oakbrook Pkwy, Ste 130 Norcross, GA 30093-2261

### ● **MEDCURA HEALTH INC**

MedCura Clarkston | 4112 E Ponce de Leon Ave Clarkston, GA 30021-8106  
MedCura Doraville | 3630 Shallowford Rd NE Doraville, GA 30340-1019  
MedCura Health, Inc. | 5582 Memorial Dr Stone Mountain, GA 30083-3215  
MedCura Hillandale | 5910 Hillandale Dr Lithonia, GA 30058-1884  
MedCura Lithonia | 5424 Hillandale Park Ct STE A Lithonia, GA 30058-8803  
MedCura Northlake | 2295 Parklake Dr NE STE 500 Atlanta, GA 30345-2822

### ● **RECOVERY CONSULTANTS OF ATLANTA, INCORPORATED**

Recovery Consultants of Atlanta Medical | 4229 Snapfinger Woods Dr Decatur, GA 30035-3440  
Recovery Consultants of Atlanta Mobile Van | 4229 Snapfinger Woods Dr Decatur, GA 30035-3440  
Recovery Consultants: Tucker | 1957 Lakeside Pkwy STE 510 Tucker, GA 30084-5859

### ● **SAINT JOSEPH'S MERCY CARE SERVICES, INC.**

Mercy Care Chamblee | 5134 Peachtree Rd Chamblee, GA 30341-2724

### ● **SOUTHSIDE MEDICAL CENTER, INC.**

SOUTHSIDE MEDICAL CENTER - Norcross Clinic | 5127 Jimmy Carter Blvd STE 205 Norcross, GA 30093-1619

### ▲ **HEALTH CENTER PROGRAM LOOK-ALIKES**

Health Center Program Look-Alikes are community-based health care providers that meet the requirements of the HRSA Health Center Program, but do not receive Health Center Program funding.

#### **ETHNE HEALTH, INC**

Ethne Health - Dental | 4122 E Ponce de Leon Ave, Ste 5 Clarkston, GA 30021-1838  
Ethne Health - Main | 980 Rowland St, Ste 4190 Clarkston, GA 30021-2203