



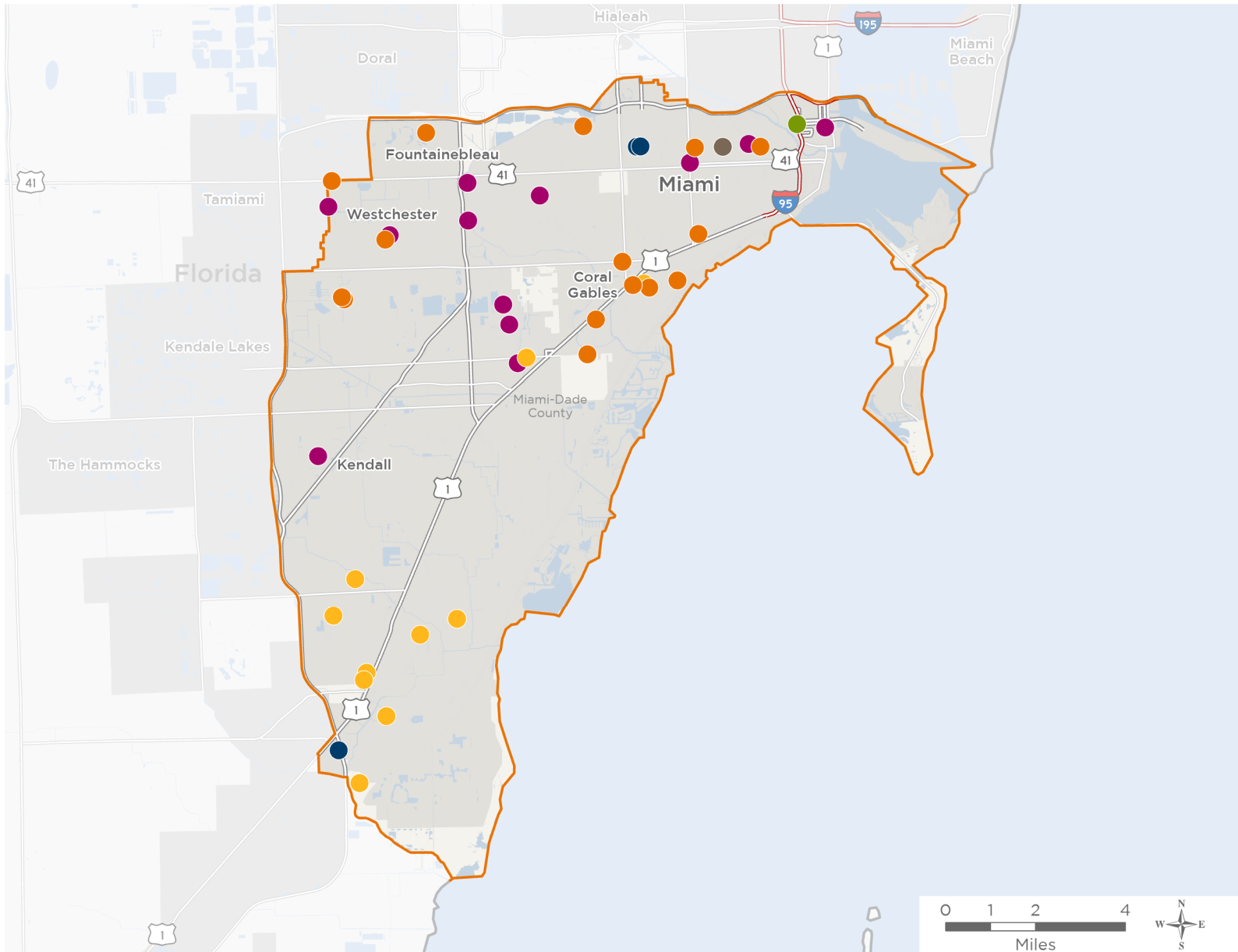
NATIONAL ASSOCIATION OF
Community Health Centers®

Representative María Elvira Salazar

119th United States Congress

Florida's **27TH** Congressional District

The 6 federally-funded health center organizations with a presence in Florida's 27th Congressional District leverage **\$37,130,905** in federal investments to serve **185,178** patients.



47

NUMBER OF DELIVERY SITES IN CONGRESSIONAL DISTRICT

- Federally-funded Delivery Site (each color represents one organization)
- Health Center Program Look-Alikes
- 119th Congressional District Boundaries
- County Boundaries
- Interstates
- Highways
- Populated Places
- Major Roads

Notes | Delivery sites represent locations of organizations funded by the federal Health Center Program. Health Center Program Look-Alikes are community-based health care providers that meet the requirements of the HRSA Health Center Program, but do not receive Health Center Program funding. Some locations may overlap due to scale or may otherwise not be visible when mapped. Federal investments represent the total funding from the federal Health Center Program to grantees with a presence in the state in 2023.

Sources | Federally-Funded Delivery Site Locations and Health Center Program Look-Alikes: data.HRSA.gov, November 2024. Health Center Patients and Federal Funding | 2024 Uniform Data System, Bureau of Primary Health Care, HRSA.



47

NUMBER OF DELIVERY SITES IN CONGRESSIONAL DISTRICT

(main organization in bold)

BANYAN COMMUNITY HEALTH CENTER INC

Banyan Care Mobile | 3733 W Flagler St Miami, FL 33134-1601

Banyan Community Health Center-Cutler Bay | 10720 Caribbean Blvd Cutler Bay, FL 33189-1218

Banyan Community Health Center - W. Flagler | 3800 W Flagler St Coral Gables, FL 33134-1604

Banyan Community Health Center 3850 Miami | 3850 W Flagler St Coral Gables, FL 33134-1604

Flagler Main Site | 3733 W Flagler St Miami, FL 33134-1601

BORINQUEN HEALTH CARE CENTER INC

BMC Flagami Center | 5040 NW 7th St, Ste 100 Miami, FL 33126-3425

BMC Sweetwater/West Dade Center | 10528 SW 8th St Miami, FL 33174-2602

Charles R. Hadley Elementary School | 8400 NW 7th St Miami, FL 33126-3802

Coconut Grove Elementary School | 3351 Matilda St Coconut Grove, FL 33133-5138

Coral Gables Senior High School | 450 Bird Rd Coral Gables, FL 33146-1306

Frances S. Tucker Elementary School | 3500 S Douglas Rd Miami, FL 33133-5708

George Washington Carver Middle School | 4901 Lincoln Dr Coral Gables, FL 33133-5635

Miami Senior High School | 2450 SW 1st St Miami, FL 33135-1402

Ponce De Leon Middle School | 5801 Augusto St Miami, FL 33146-2606

Riverside Elementary School | 1190 SW 2nd St Miami, FL 33130-1059

Riviera Middle School | 10301 SW 48th St Miami, FL 33165-5639

Rockway Middle School | 9393 SW 29th Ter Miami, FL 33165-3106

Silver Bluff Elementary School | 2609 SW 25th Ave Miami, FL 33133-2214

Sunset Elementary School | 5120 Sunset Dr Miami, FL 33143-6024

Tropical Elementary School | 4545 SW 104th Ave Miami, FL 33165-5634

CAMILLUS HEALTH CONCERN INC

Camillus Health Concern Medical Mobile Van #1 | 336 NW 5th St Miami, FL 33128-1616

Camillus Health Concern, Greer Building | 336 NW 5th St Miami, FL 33128-1616

CARE RESOURCE COMMUNITY HEALTH CENTERS INC

Care Resource Community Health Center at Little Havana | 1901 SW 1st St Miami, FL 33135-1601

CITRUS HEALTH NETWORK INC

CHN MDC Kendall | 11011 SW 104th St Miami, FL 33176-3330

CHN MDC Padron | 627 SW 27th Ave Miami, FL 33135-2937

CHN MDC Wolfson | 300 NE 2nd Ave Miami, FL 33132-2204

Embrace clinic | 1645 SW 107th Ave STE 114A Miami, FL 33165-7344

Flagami Elementary School | 920 SW 76th Ave Miami, FL 33144-4430



NATIONAL ASSOCIATION OF
Community Health Centers®

Representative María Elvira Salazar
119th United States Congress

Florida's **27TH** Congressional District

47

NUMBER OF DELIVERY SITES IN CONGRESSIONAL DISTRICT

(main organization in bold)

FRC Children's Behavioral Clinic | 1393 SW 1st St Miami, FL 33135-2301
Ludlam Elementary School | 6639 SW 74th St South Miami, FL 33143-4621
Rockaway Elementary School | 2790 SW 93rd Ct Miami, FL 33165-3144
South Miami Middle School | 6750 SW 60th St Miami, FL 33143-1909
South Miami Senior High | 6856 SW 53rd St Miami, FL 33155-5716
Sylvania Heights Elementary School | 5901 SW 16th St Miami, FL 33155-2106
West Miami Middle | 7525 Coral Way Miami, FL 33155-1405

COMMUNITY HEALTH OF SOUTH FLORIDA, INC.

Coconut Grove Health Center | 3831 Grand Ave Miami, FL 33133-4862
Colonial Drive Elementary | 10755 SW 160th St Miami, FL 33157-2947
Cutler Bay Middle School | 19400 Gulfstream Rd Cutler Bay, FL 33157-8658
Doris Ison Health Center | 10300 SW 216th St Cutler Bay, FL 33190-1003
Dorothy M. Wallace COPE Center | 10225 SW 147th Ter Miami, FL 33176-7744
Dr. Henry E. Perrine Academy of the Arts | 8851 SW 168th St Palmetto Bay, FL 33157-4549
Mobile Medical Van #2 | 10300 SW 216th St Cutler Bay, FL 33190-1003
Mobile Van #1 | 10300 SW 216th St Cutler Bay, FL 33190-1003
Robert Russa Moton Elementary | 18050 Homestead Ave Perrine, FL 33157-5529
South Miami Health Center | 6350 Sunset Dr Miami, FL 33143-4836
South Wood Middle School | 16301 SW 80th Ave Palmetto Bay, FL 33157-3730
West Perrine Health Center | 18225 Homestead Ave Perrine, FL 33157-5564