



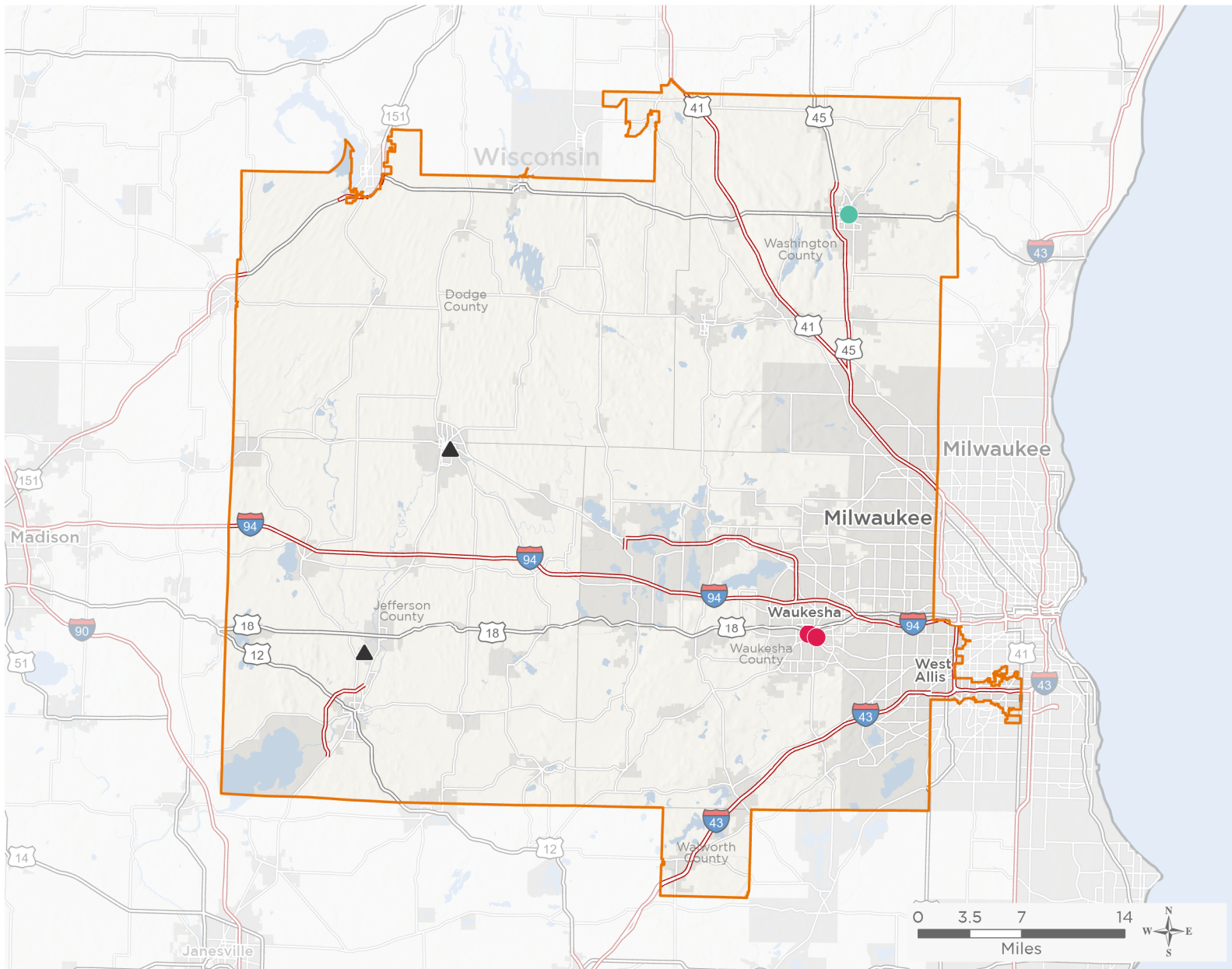
NATIONAL ASSOCIATION OF  
Community Health Centers

# Representative Scott L. Fitzgerald

118th United States Congress

Wisconsin's **5<sup>TH</sup>** Congressional District

The 2 federally-funded health center organizations with a presence in Wisconsin's 5th Congressional District leverage **\$7,470,296** in federal investments to serve **52,588** patients.



**3**

## NUMBER OF DELIVERY SITES IN CONGRESSIONAL DISTRICT

- Federally-funded Delivery Site (each color represents one organization)
- Health Center Program Look-Alikes
- 118th Congressional District Boundaries
- County Boundaries
- Interstates
- Highways
- Populated Places
- Major Roads

Notes | Delivery sites represent locations of organizations funded by the federal Health Center Program. Health Center Program Look-Alikes are community-based health care providers that meet the requirements of the HRSA Health Center Program, but do not receive Health Center Program funding. Some locations may overlap due to scale or may otherwise not be visible when mapped. Domestic violence shelters are excluded from the map and delivery site statistics. Federal investments represent the total funding from the federal Health Center Program to grantees with a presence in the state in 2021.

Sources | Federally-Funded Delivery Site Locations and Health Center Program Look-Alikes: data.HRSA.gov, December 2022.  
Health Center Patients and Federal Funding | 2021 Uniform Data System, Bureau of Primary Health Care, HRSA.



**3**

### NUMBER OF DELIVERY SITES IN CONGRESSIONAL DISTRICT

(main organization in bold)

#### **LAKESHORE COMMUNITY HEALTH CARE, INC**

LCHC West Bend | 908 W Washington St West Bend, WI 53095-2430

#### **SIXTEENTH STREET COMMUNITY HEALTH CENTERS, INC.**

Sixteenth Street Community Health Centers-Waukesha | 309 E North St Waukesha, WI 53188-3718

Sixteenth Street Community Health Ctrs - La Casa de Esperanza Charter School | 410 Arcadian Ave Waukesha, WI 53186

#### **▲ HEALTH CENTER PROGRAM LOOK-ALIKES**

Health Center Program Look-Alikes are community-based health care providers that meet the requirements of the HRSA Health Center Program, but do not receive Health Center Program funding.

#### **ROCK RIVER COMMUNITY CLINIC, INC.**

Rock River Community Clinic - Jefferson | 1541 Annex Rd Jefferson, WI 53549-9803

Rock River Community Clinic - Watertown | 415 S 8th St Watertown, WI 53094-4730