



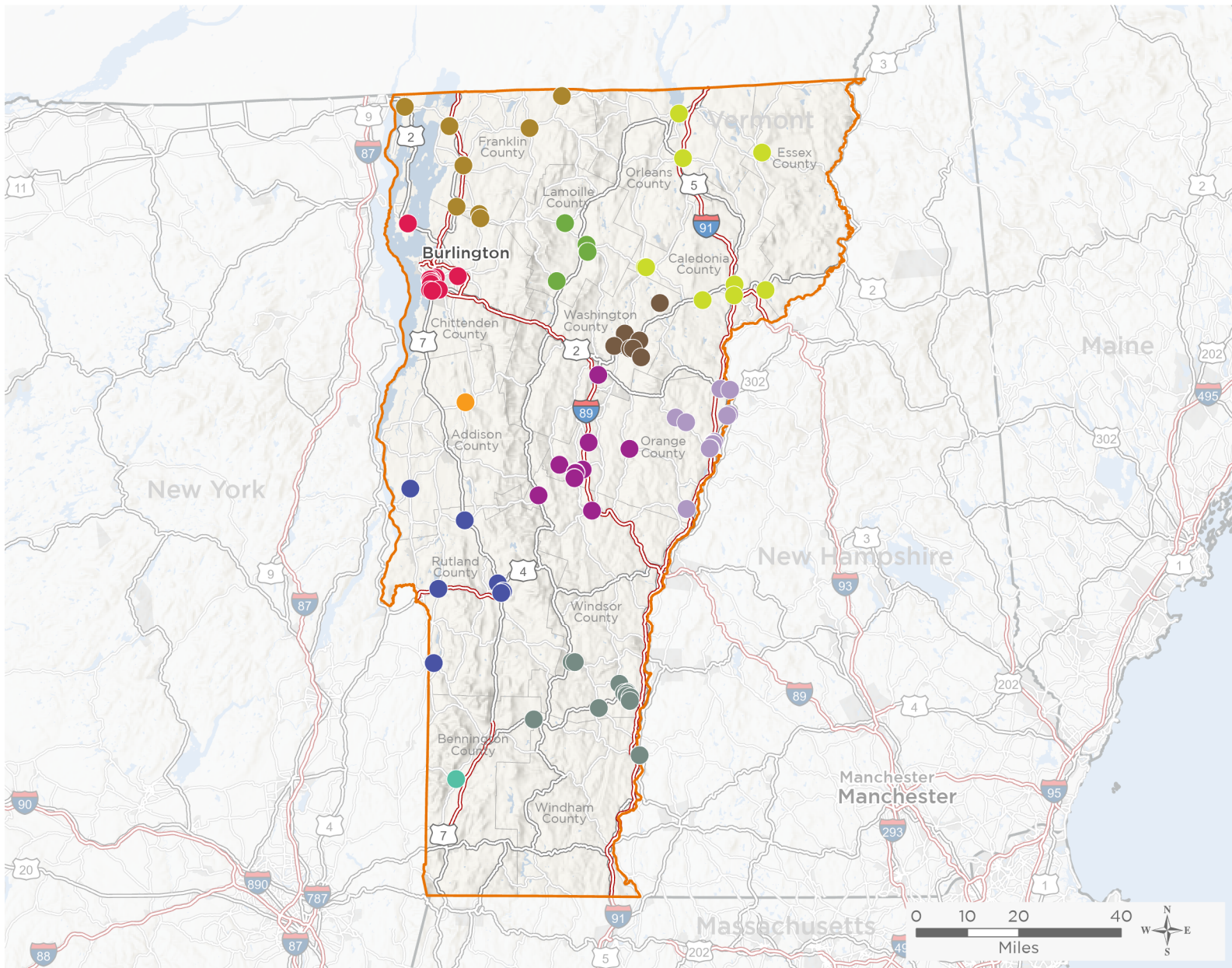
NATIONAL ASSOCIATION OF
Community Health Centers

Representative Becca Balint

118th United States Congress

Vermont's **AL** Congressional District

The 11 federally-funded health center organizations with a presence in Vermont's At Large Congressional District leverage **\$25,404,664** in federal investments to serve **184,682** patients.



97

**NUMBER OF DELIVERY SITES
IN CONGRESSIONAL DISTRICT**

- Federally-funded Delivery Site (each color represents one organization)
- Health Center Program Look-Alikes
- 118th Congressional District Boundaries
- Interstates
- Highways
- Major Roads
- County Boundaries
- Populated Places

Notes | Delivery sites represent locations of organizations funded by the federal Health Center Program. Health Center Program Look-Alikes are community-based health care providers that meet the requirements of the HRSA Health Center Program, but do not receive Health Center Program funding. Some locations may overlap due to scale or may otherwise not be visible when mapped. Federal investments represent the total funding from the federal Health Center Program to grantees with a presence in the state in 2021.

Sources | Federally-Funded Delivery Site Locations and Health Center Program Look-Alikes: data.HRSA.gov, December 2022.
Health Center Patients and Federal Funding | 2021 Uniform Data System, Bureau of Primary Health Care, HRSA.

© National Association of Community Health Centers, 2023. For more information, please contact federalaffairs@nachc.org.



97

NUMBER OF DELIVERY SITES IN CONGRESSIONAL DISTRICT

(main organization in bold)

BATTENKILL VALLEY HEALTH CENTER INC

Battenkill Valley Health Center Inc. | 9 Church St Arlington, VT 05250-4457
Battenkill Valley Health Center, Inc. | 18 Church St Arlington, VT 05250-4457

COMMUNITY HEALTH CENTERS OF BURLINGTON, INC.

Burlington Hlth & Rehab Center | 300 Pearl St Burlington, VT 05401-8531
Champlain Islands Health Center | 52 Community Ln South Hero, VT 05486-4418
Community Health Centers at Essex | 87 Main St Essex Junction, VT 05452-3234
GoodHEALTH Internal Medicine | 368 Dorset St STE 1 South Burlington, VT 05403-6236
LUND Family Center | 76 Glen Rd Burlington, VT 05401-4131
Pearl Street Youth Health Center | 179 Pearl St Burlington, VT 05401-3704
Riverside Health Center | 617 Riverside Ave Burlington, VT 05401-1601
Safe Harbor Health Center | 184 S Winooski Ave Burlington, VT 05401-4535
School-Based Dental Center at the Integrated Arts Academy (IAA) | 6 Archibald St Burlington, VT 05401-4220
South End Health Center | 789 Pine St Burlington, VT 05401-4924
Winooski Family Health | 32 Malletts Bay Ave Winooski, VT 05404-1959

COMMUNITY HEALTH CENTERS OF RUTLAND

Allen Pond Community Health Center | 71 Allen St STE 403 Rutland, VT 05701-4570
Brandon Medical Center | 420 Grove St Brandon, VT 05733-9062
Castleton Family Health Center/CHCRR Admin | 275 Route 30 N Bomoseen, VT 05732-9647
CHCRR Pediatric Dental | 69 Allen St STE 7 Rutland, VT 05701-4564
CHCRR Pediatrics | 1 General Wing Rd Rutland, VT 05701-4681
CHCRR Shoreham Family Health Center | 2987 Vt Route 22A Shoreham, VT 05770-9728
Community Dental | 69 Allen St, Ste 10 Rutland, VT 05701-4564
Community Health North Main Street | 231 N Main St Rutland, VT 05701-2412
Mettowee Valley Family Health Center | 278 Vt Route 149 West Pawlet, VT 05775-9798
Rutland Community Health Center | 215 Stratton Rd Rutland, VT 05701-4621

FIVE-TOWN HEALTH ALLIANCE, INC.

MHC Mobile Health Unit | 61 Pine St BLDG 4 Bristol, VT 05443-1043
Mountain Health Center | 61 Pine St BLDG 4 Bristol, VT 05443-1043

GIFFORD HEALTH CARE, INC.

Bethel Health Center | 1823 Vt Rte 107 Uppr Level Bethel, VT 05032-9324
Braintree Elementary School | 66 Bent Hill Rd Rm 118 Braintree, VT 05060-8810
Brookfield Elementary School | 1728 Ridge Rd Rm 12 Brookfield, VT 05036-9778
Chelsea Health Center | 356 Vt Rte 110 Chelsea, VT 05038-8993
Gifford Health Center at Berlin | 2418 Airport Rd STE 1 Barre, VT 05641-8702



97

NUMBER OF DELIVERY SITES IN CONGRESSIONAL DISTRICT

(main organization in bold)

GIFFORD HEALTH CARE, INC.

Gifford OB/GYN and Midwifery | 44 S Main St STE 1 Randolph, VT 05060-1381
Gifford Pediatric and Adolescent Medicine | 40 S Main St Randolph, VT 05060-1377
Gifford Primary Care | 44 S Main St STE 2 Randolph, VT 05060-1381
Kingwood Health Center | 1422 Vt Route 66 Uppr Level Randolph, VT 05060-7718
Randolph Elementary School | 40 Ayers Brook Rd Rm 233 Randolph, VT 05060-1012
Randolph Technical Career Center | 17 Forest St Rm 405 Randolph, VT 05060-1006
Randolph Union Middle/High School | 15 Forest St Rm 116 Randolph, VT 05060-1006
Rochester Health Center | 235 S Main St Rochester, VT 05767-9683

LAMOILLE HEALTH PARTNERS, INC.

Johnson Elementary School | 57 College HI Johnson, VT 05656-9746
Lamoille Health Behavioral Health & Wellness | 607 Washington Hwy Morrisville, VT 05661-8652
Lamoille Health Family Dentistry | 66 Morrisville Plz Morrisville, VT 05661-4482
Lamoille Health Family Medicine - Morrisville | 609 Washington Hwy Morrisville, VT 05661-8652
Lamoille Health Family Medicine - Stowe | 1878 Mountain Rd STE 3 Stowe, VT 05672-4775

LITTLE RIVERS HEALTH CARE, INC.

Blue Mountain Union School | 2420 Route 302 Wells River, VT 05081-9750
Bradford | 437 S Main St Bradford, VT 05033-9196
Bradford Elementary School | 143 Fairground Rd Bradford, VT 05033-9040
East Corinth | 720 Village Rd East Corinth, VT 05040-9783
Little Rivers Health Care. Inc. Administration | 146 Mill St Bradford, VT 05033-4456
LRHC Newbury | 4628 Main St S Newbury, VT 05051-9712
Newbury Elementary School | 214 Pulaski St Newbury, VT 05051
Oxbow High School | 36 Oxbow Dr Bradford, VT 05033-9037
Thetford Elementary School | 2689 Vt-113 Thetford Center, VT 05075
Valley Vista | 23 Upper Pln Bradford, VT 05033-9016
Waits River Valley School | 6 Waits River Vly School Rd West Topsham, VT 05086
Wells River | 65 Main St N Wells River, VT 05081-9692

NORTHEAST WASHINGTON COUNTY COMMUNITY HEALTH INC

Cabot Health Services SBHC | 25 Common Rd Cabot, VT 05647-9731
Calais Elementary School | 321 Lightning Ridge Rd Plainfield, VT 05667-9318
Caledonia Central Supervisory Union Twinfield School | 106 Nasmith Brook Rd Plainfield, VT 05667-9060
East Montpelier Elementary School | 665 Vincent Flats Rd E Montpelier, VT 05651-4405
Maplehill School | E Hill Rd Plainfield, VT 05667
The Health Center | 157 Towne Ave Plainfield, VT 05667-9425
Vermont Dental Care Mobile | PO Box 320 Plainfield, VT 05667-0320



97

NUMBER OF DELIVERY SITES IN CONGRESSIONAL DISTRICT

(main organization in bold)

NORTHERN COUNTIES HEALTH CARE INC

Concord Health Center | 201 Main St Concord, VT 05824-9825
Danville Health Center | 26 Cedar Ln Danville, VT 05828-9751
Hardwick Area Health Center | 4 Slapp HI Hardwick, VT 05843-9300
Island Pond Dental Center | 82 Maple St Island Pond, VT 05846
Island Pond Health Center | 82 Maple St Island Pond, VT 05846
Northern Counties Dental Center | 151 N Main St Hardwick, VT 05843-7065
Northern Express Care Newport | 137 Main St STE 102 Newport, VT 05855-4415
Northern Express Care St. Johnsbury | 1 Eastern Ave Saint Johnsbury, VT 05819-2661
Orleans Dental Center | 11 Union St Orleans, VT 05860-1218
St. Johnsbury Community Health Center | 185 Sherman Dr Saint Johnsbury, VT 05819-9811

RICHFORD HEALTH CENTER, INC.

Alburl Health Center | 64 Industrial Park Rd Alburgh, VT 05440
Enosburg Health Center | 382 Main St Enosburg Falls, VT 05450-6008
Fairfax Health Center | 1199 Main St Fairfax, VT 05454-9530
Fairfax Pharmacy | 997 Main St Fairfax, VT 05454-9901
Georgia Health Center | 4178 Highbridge Rd Fairfax, VT 05454-5446
NOTCH Pharmacy | 44 Main St, Ste 200 Richford, VT 05476-1141
NOTCH Primary Care | 12 Crest Rd Saint Albans, VT 05478-9701
Richford Dental Clinic | 44 Main St Ste 400 Richford, VT 05476-1141
Richford Health Center | 44 Main St Richford, VT 05476-1153
St Albans Health Center | 3 Crest Rd Saint Albans, VT 05478-9753
Swanton Health Center | 26 Canada St Swanton, VT 05488-1335
Swanton Rexall | 13 York St Swanton, VT 05488-1320

SPRINGFIELD MEDICAL CARE SYSTEM INC

Chester Dental Center | 55 Main St Chester, VT 05143-9115
Dr. Delores Barbeau Mobile Unit | 100 River St Springfield, VT 05156-2930
Edgar May Health and Recreation Center | 140 Clinton St Springfield, VT 05156-3304
Elm Hill School Health Center | 10 Hoover St Springfield, VT 05156-2425
Lane Eye Associates | 441 River St North Springfield, VT 05150-9756
Ludlow Dental | 8 Main St Ludlow, VT 05149-1106
Ludlow Health Center | 1 Elm St Ludlow, VT 05149-1301
Mountain Valley Health Center | 38 Vt Route 11 Londonderry, VT 05148-9555
Riverside Middle School Health Center | 13 Fairground Rd Springfield, VT 05156-2112
Rockingham Health Center | 1 Hospital Ct Bellows Falls, VT 05101-1489
Springfield Health Center | 100 River St Springfield, VT 05156-2930



NATIONAL ASSOCIATION OF
Community Health Centers

Representative Becca Balint
118th United States Congress

Vermont's **AL** Congressional District

97

**NUMBER OF DELIVERY SITES IN
CONGRESSIONAL DISTRICT**

(main organization in bold)

● **SPRINGFIELD MEDICAL CARE SYSTEM INC**

Springfield High School Health Center | 303 South St Springfield, VT 05156-3226

Union Street School Health Center | 43 Union St Springfield, VT 05156-3133