



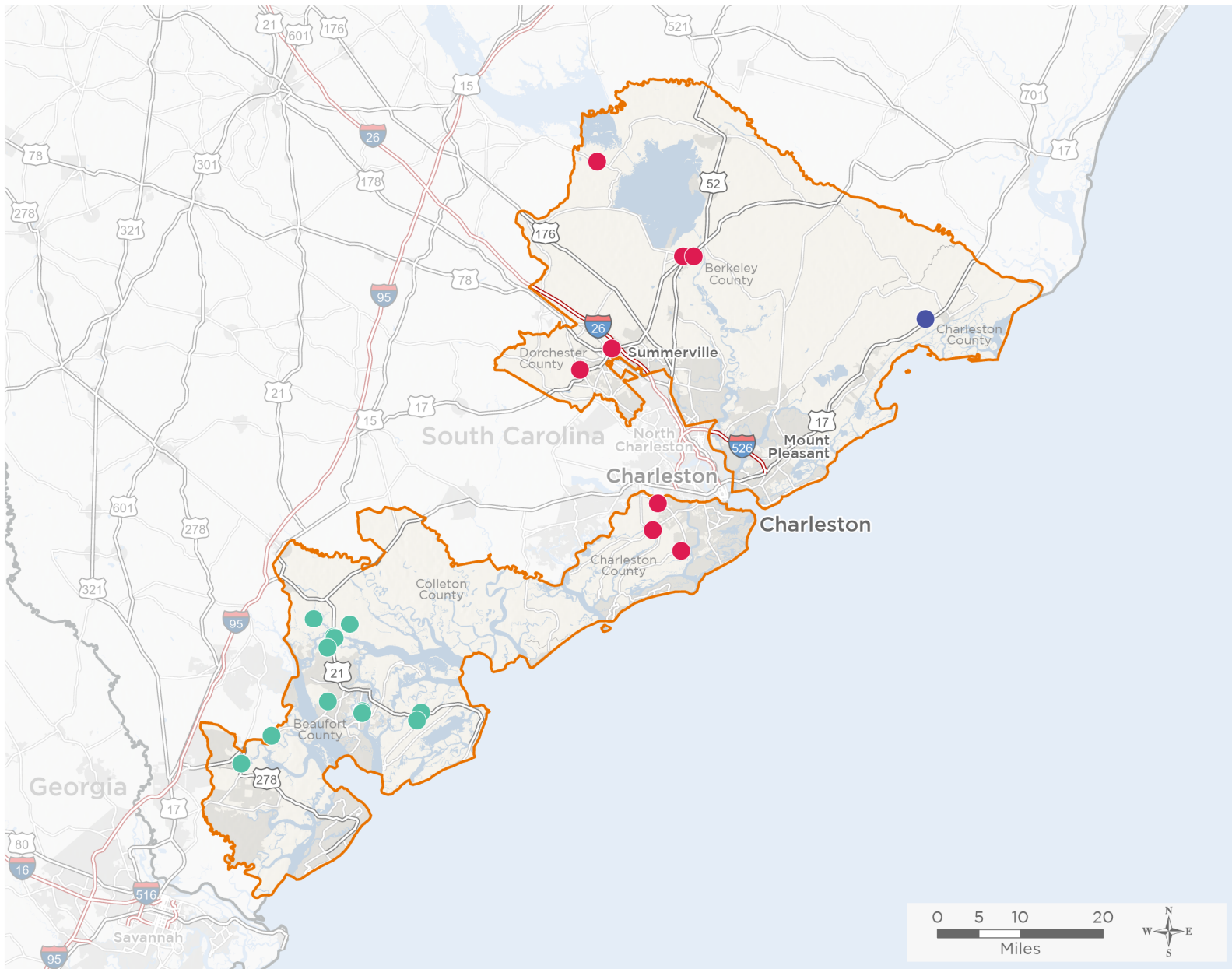
NATIONAL ASSOCIATION OF  
Community Health Centers

# Representative Nancy Mace

118th United States Congress

South Carolina's **1<sup>ST</sup>** Congressional District

The 3 federally-funded health center organizations with a presence in South Carolina's 1st Congressional District leverage **\$18,542,538** in federal investments to serve **39,794** patients.



- ● ● Federally-funded Delivery Site (each color represents one organization)
- ▲ Health Center Program Look-Alikes
- 118th Congressional District Boundaries
- County Boundaries
- Populated Places
- Interstates
- Highways
- Major Roads

**25**

**NUMBER OF DELIVERY SITES  
IN CONGRESSIONAL DISTRICT**

Notes | Delivery sites represent locations of organizations funded by the federal Health Center Program. Health Center Program Look-Alikes are community-based health care providers that meet the requirements of the HRSA Health Center Program, but do not receive Health Center Program funding. Some locations may overlap due to scale or may otherwise not be visible when mapped. Domestic violence shelters are excluded from the map and delivery site statistics. Federal investments represent the total funding from the federal Health Center Program to grantees with a presence in the state in 2021.

Sources | Federally-Funded Delivery Site Locations and Health Center Program Look-Alikes: data.HRSA.gov, December 2022. Health Center Patients and Federal Funding | 2021 Uniform Data System, Bureau of Primary Health Care, HRSA.

© National Association of Community Health Centers, 2023. For more information, please contact [federalaffairs@nachc.org](mailto:federalaffairs@nachc.org).



**25**

### NUMBER OF DELIVERY SITES IN CONGRESSIONAL DISTRICT

(main organization in bold)

#### **BEAUFORT-JASPER-HAMPTON COMPREHENSIVE HEALTH SERVICES, INCORPORATED**

Beaufort-Jasper Hampton Comp Hlth Services, Inc. | 721 Okatie Hwy Okatie, SC 29909-3963  
Beaufort Jasper Hampton Comprehensive Health Services Mobile Unit | 719 Okatie Hwy Okatie, SC 29909-3963  
BJHCHS Ronald McDonald Mobile Unit | 719 Okatie Hwy Okatie, SC 29909-3963  
Broad River Elem School Hlth Ctr | 474 Broad River Blvd Beaufort, SC 29906-9489  
Elijah Washington Medical Center | 21 Paige Point Blf Sheldon, SC 29941-2700  
James J Davis Early Learning Center | 364 Keans Neck Rd Seabrook, SC 29940-3122  
Leroy E. Browne Medical Center | 6315 Jonathan Francis Sr Rd Saint Helena Island, SC 29920-5310  
Port Royal Medical Center | 1320 Ribaut Rd Port Royal, SC 29935-1118  
Port Royal Medical Center II | 2210 Mossy Oaks Rd Port Royal, SC 29935-1046  
Port Royal OB/GYN | 1264 Ribaut Rd STE 200 Beaufort, SC 29902-6127  
Ruth P. Field Medical Center | 719 N Okatie Hwy Ridgeland, SC 29936-8276  
St. Helena Elementary School | 1025 Sea Island Pkwy St Helena Is, SC 29920-4301  
Whale Branch Early College High School | 69 Detour Rd Seabrook, SC 29940-3805  
Whale Branch Elementary School | 15 Stuart Point Rd Seabrook, SC 29940-3601  
Whale Branch Middle School | 2009 Trask Pkwy Seabrook, SC 29940-3668

#### **FETTER HEALTH CARE NETWORK, INC.**

Berkeley Community Mental Health | 403 Stony Landing Rd Moncks Corner, SC 29461-3967  
Dorchester Family Health Center | 679 Orangeburg Rd UNIT F Summerville, SC 29483-9038  
Elijah Wright Family Health Center | 1681 Old Highway 6 Cross, SC 29436-3602  
Fields Farm Camp | 3129 River Rd Johns Island, SC 29455-8857  
Johns Island Family Health Center | 3627 Maybank Hwy Johns Island, SC 29455-4836  
Packing Shed Housing Camp | 771 Brownswood Rd Johns Island, SC 29455-3239  
Rose D. Gibbs, MD Family Health Center | 106 W Main St Moncks Corner, SC 29461-2601  
Thaddeus J Bell, MD Family Health Center Annex | 120 Varnfield Dr, Ste B Summerville, SC 29483-7313  
Thaddeus J. Bell, MD Family Health Center | 130 Varnfield Dr STE 100 Summerville, SC 29483-7317

#### **ST JAMES HEALTH & WELLNESS INC**

St. James-Santee Family Health Center, Inc. | 1189 Tibwin Rd Mc Clellanville, SC 29458-9405