



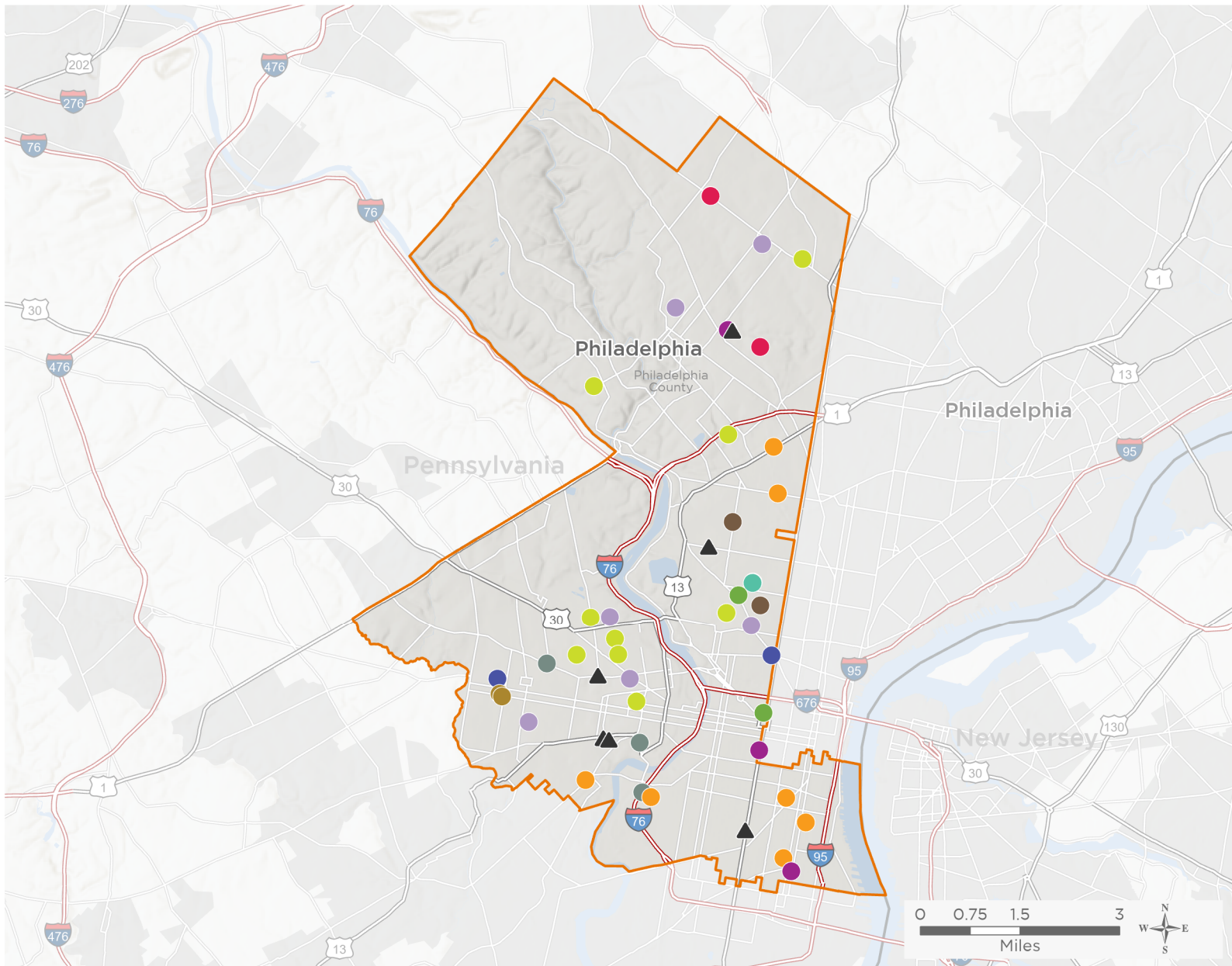
NATIONAL ASSOCIATION OF  
Community Health Centers

# Representative Dwight Evans

118th United States Congress

Pennsylvania's **3<sup>RD</sup>** Congressional District

The 11 federally-funded health center organizations with a presence in Pennsylvania's 3rd Congressional District leverage **\$45,451,436** in federal investments to serve **252,634** patients.



**41**

**NUMBER OF DELIVERY SITES  
IN CONGRESSIONAL DISTRICT**

- ● ● ● Federally-funded Delivery Site (each color represents one organization)
- ▲ Health Center Program Look-Alikes
- ▭ 118th Congressional District Boundaries
- ▭ County Boundaries
- ▭ Populated Places
- ▭ Interstates
- ▭ Highways
- ▭ Major Roads

Notes | Delivery sites represent locations of organizations funded by the federal Health Center Program. Health Center Program Look-Alikes are community-based health care providers that meet the requirements of the HRSA Health Center Program, but do not receive Health Center Program funding. Some locations may overlap due to scale or may otherwise not be visible when mapped. Federal investments represent the total funding from the federal Health Center Program to grantees with a presence in the state in 2021.

Sources | Federally-Funded Delivery Site Locations and Health Center Program Look-Alikes: data.HRSA.gov, December 2022.  
Health Center Patients and Federal Funding | 2021 Uniform Data System, Bureau of Primary Health Care, HRSA.

© National Association of Community Health Centers, 2023. For more information, please contact [federalaffairs@nachc.org](mailto:federalaffairs@nachc.org).



41

## NUMBER OF DELIVERY SITES IN CONGRESSIONAL DISTRICT

(main organization in bold)

### **CITY OF PHILADELPHIA**

Philadelphia District Health Center #5 | 1900 N 20th St Philadelphia, PA 19121-2217

Temporary Site- Berks Street Annex | 2001 W Berks St Philadelphia, PA 19121

### **COVENANT HOUSE INC**

Covenant House Health and Dental Cener | 8127 Stenton Ave Philadelphia, PA 19150-3530

COVENANT HOUSE, Inc. | 251 E Brighthurst St Philadelphia, PA 19144-1719

Mt. Pleasant Medical Center | 8125 Stenton Ave Philadelphia, PA 19150-3530

### **DELAWARE VALLEY COMMUNITY HEALTH, INC.**

Fairmount Primary Care Center | 1412 Fairmount Ave Philadelphia, PA 19130-2908

Fairmount Primary Care Center at Horizon House | 5901 Market St Philadelphia, PA 19139-3117

### **GREATER PHILADELPHIA HEALTH ACTION INC**

AI-Assist Behavioral Health Care | 1401 S 4th St Philadelphia, PA 19147-5948

Carl Moore Health Center | 1401 S 31st St Philadelphia, PA 19146-3506

GPHA - Cristo Rey Health Suite | 1717 W Allegheny Ave Philadelphia, PA 19132-1606

Hunting Park Health Center | 1999 W Hunting Park Ave Philadelphia, PA 19140-2828

Snyder Avenue Dental Center | 640 Snyder Ave Philadelphia, PA 19148-2419

Southeast Health Center | 800 Washington Ave Philadelphia, PA 19147-4717

Woodland Avenue Health Center | 5000 Woodland Ave Philadelphia, PA 19143-5137

### **PHILADELPHIA FIGHT**

Broad Street Ministry | 315 S Broad St Philadelphia, PA 19107-5213

Temporary Site - Philadelphia FIGHT - SEAMAAC | 500 Wolf St Philadelphia, PA 19148

Temporary Site - Philadelphia FIGHT Face to Face | 123 E Price St Philadelphia, PA 19144-2145

### **PROJECT HOME**

Hub of Hope | 1401 Arch St Philadelphia, PA 19102-1525

Stephen Klein Wellness Center | 2144 Cecil B Moore Ave Philadelphia, PA 19121-4014

### **PUBLIC HEALTH MANAGEMENT CORP**

Interim House West | 4108 Parkside Ave Philadelphia, PA 19104-1020

Interim House, Inc. | 333 W Upsal St Philadelphia, PA 19119-4010

PEC Nursing Center | 3939 Warren St Philadelphia, PA 19104-4642

PHMC Health Center on Cedar Avenue | 501 S 54th St Philadelphia, PA 19143-1900

Serenity Court | 1221 N 19th St Philadelphia, PA 19121-4901

Stenton Family Manor | 1300 E Tulpehocken St Philadelphia, PA 19138-1523

### **QUALITY COMMUNITY HEALTH CARE INC**

Meade Family Health Center | N 18th St & W Oxford St Philadelphia, PA 19121



**41**

## NUMBER OF DELIVERY SITES IN CONGRESSIONAL DISTRICT

(main organization in bold)

### **QUALITY COMMUNITY HEALTH CARE INC**

Quality Community Health Care, Inc. | 2501 W Lehigh Ave Philadelphia, PA 19132-3207

### **RESOURCES FOR HUMAN DEVELOPMENT, INC.**

Abbottsford Falls Fp & Counseling | 4700 Wissahickon Ave Bldg D # 118 Philadelphia, PA 19144-4248

Annex West | 3901 Market St Philadelphia, PA 19104-3133

Building 21 High School | 6501 Limekiln Pike Philadelphia, PA 19138-3102

FPCN at Belmont Charter Network Academy Charter School | 907 N 41st St Philadelphia, PA 19104-1278

FPCN at Belmont Charter Network HS/Inquiry Primary School | 1301 Belmont Ave Philadelphia, PA 19104-1044

FPCN at Belmont Charter Network Primary/Middle School | 4030 Brown St Philadelphia, PA 19104-4844

FPCN at CB Community School | 4101 Freeland Ave Philadelphia, PA 19128-3509

FPCN at Mill Creek | 807 N 48th St Philadelphia, PA 19139-1854

Vaux Bigger Picture High School | 2300 W Master St Philadelphia, PA 19121-4996

### **SAYRE HEALTH CENTER**

Dr. BLJ Sayre Health Center Mobile Van | 5800 Walnut St Philadelphia, PA 19139-3836

The Sayre Health Center | 5800 Walnut St Ste 121 Philadelphia, PA 19139-3836

### **SPECTRUM HEALTH SERVICES**

Reed Street Health Center | 1325 S 33rd St STE 300 Philadelphia, PA 19146-3303

Spectrum Community Health Center | 5201 Haverford Ave Philadelphia, PA 19139-1401

The Consoritum | 451 S University Ave Ste 202 Philadelphia, PA 19104-4544

### **HEALTH CENTER PROGRAM LOOK-ALIKES**

Health Center Program Look-Alikes are community-based health care providers that meet the requirements of the HRSA Health Center Program, but do not receive Health Center Program funding.

#### **CITY OF PHILADELPHIA**

Philadelphia District Health Center #2 | 1700 S Broad St APT 201 Philadelphia, PA 19145-2340

Philadelphia District Health Center #3 | 555 S 43rd St Philadelphia, PA 19104-4408

Philadelphia District Health Center #4 | 4400 Haverford Ave Philadelphia, PA 19104-1399

Philadelphia District Health Center #9 | 131 E Cheltenham Ave Philadelphia, PA 19144-2153

Strawberry Mansion Health Center | 2840 W Dauphin St Philadelphia, PA 19132-4627

Temporary Site - Health Center 3 | 4219 Chester Ave Philadelphia, PA 19104-4415