



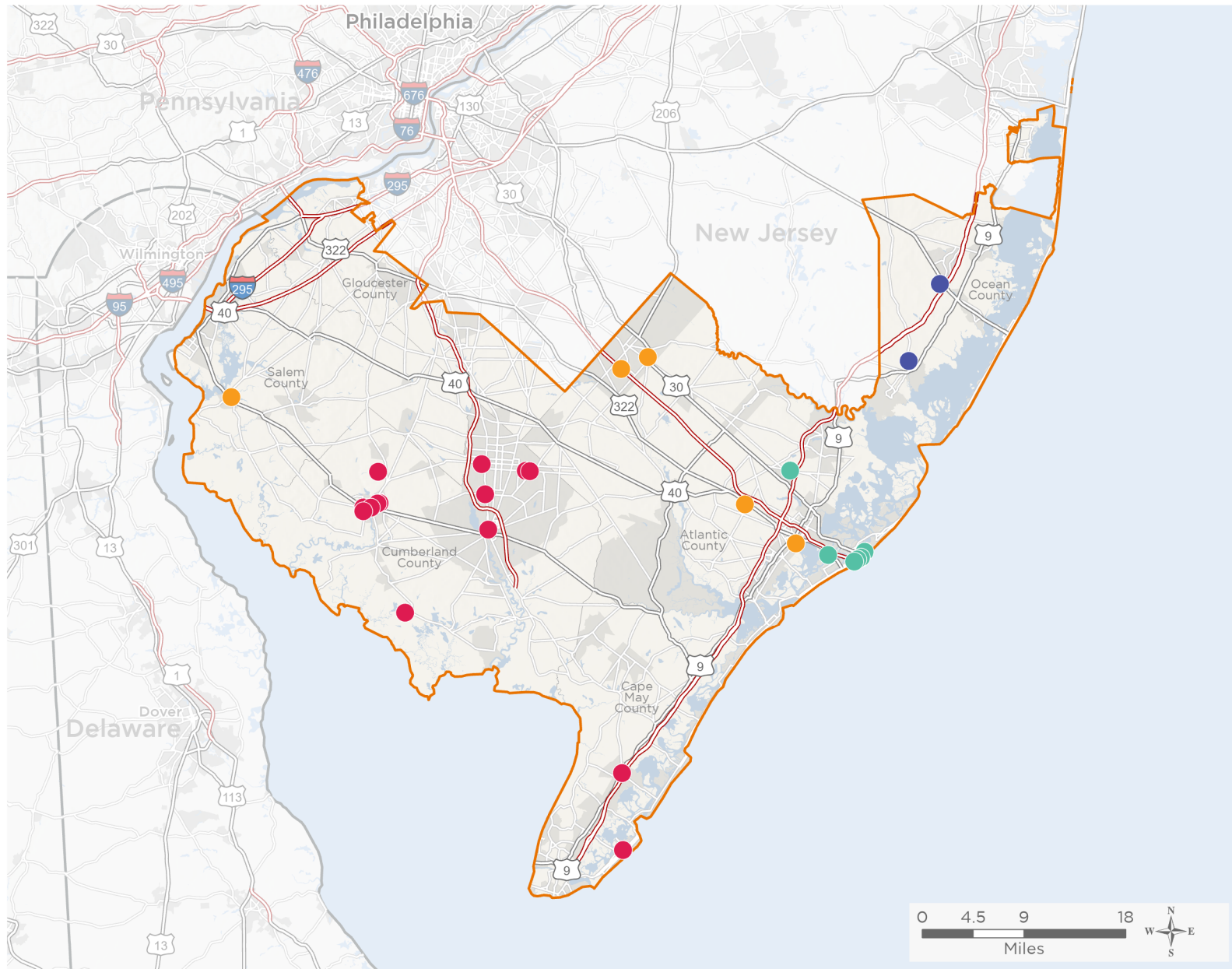
NATIONAL ASSOCIATION OF
Community Health Centers

Representative Jeff Van Drew

118th United States Congress

New Jersey's **2ND** Congressional District

The 4 federally-funded health center organizations with a presence in New Jersey's 2nd Congressional District leverage **\$23,012,221** in federal investments to serve **139,378** patients.



38

**NUMBER OF DELIVERY SITES
IN CONGRESSIONAL DISTRICT**

- ● ● ● Federally-funded Delivery Site (each color represents one organization)
- ▲ Health Center Program Look-Alikes
- 118th Congressional District Boundaries
- County Boundaries
- Populated Places
- Interstates
- Highways
- Major Roads

Notes | Delivery sites represent locations of organizations funded by the federal Health Center Program. Health Center Program Look-Alikes are community-based health care providers that meet the requirements of the HRSA Health Center Program, but do not receive Health Center Program funding. Some locations may overlap due to scale or may otherwise not be visible when mapped. Federal investments represent the total funding from the federal Health Center Program to grantees with a presence in the state in 2021.

Sources | Federally-Funded Delivery Site Locations and Health Center Program Look-Alikes: data.HRSA.gov, December 2022. Health Center Patients and Federal Funding | 2021 Uniform Data System, Bureau of Primary Health Care, HRSA.

© National Association of Community Health Centers, 2023. For more information, please contact federalaffairs@nachc.org.



38

NUMBER OF DELIVERY SITES IN CONGRESSIONAL DISTRICT

(main organization in bold)

● **ATLANTICARE HEALTH SERVICES INC**

AtlantiCare Health Services- FQHC Family Medicine Residency Clinic | 7 S Ohio Ave FL 2 Atlantic City, NJ 08401-6711
AtlantiCare Health Services-FQHC Senior Care | 1401 Atlantic Ave STE 1400 Atlantic City, NJ 08401-7031
AtlantiCare Health Services - FQHC Adult Medicine | 1401 Atlantic Ave STE 2500 Atlantic City, NJ 08401-7001
AtlantiCare Health Services - FQHC Adult Medicine Residency Teaching Clinic | 1401 Atlantic Ave STE 2800 Atlantic City, NJ 08401-7001
AtlantiCare Health Services - FQHC at Atlantic City HS | 1400 N Albany Ave STE G201 Atlantic City, NJ 08401-1208
AtlantiCare Health Services - FQHC at Jeffries Tower | 227 N Vermont Ave Atlantic City, NJ 08401-5501
AtlantiCare Health Services - FQHC Infectious Disease Clinic | 1401 Atlantic Ave Ste 2100 Atlantic City, NJ 08401-7001
AtlantiCare Health Services - FQHC Pediatric Clinic | 1401 Atlantic Ave STE 2200 Atlantic City, NJ 08401-7001
AtlantiCare Health Services - FQHC Pediatric Clinic | 7 S Ohio Ave FL 3 Atlantic City, NJ 08401-6711
AtlantiCare Health Services - FQHC Psychiatric Residency Clinic | 1401 Atlantic Ave STE 1600 Atlantic City, NJ 08401-7001
Atlanticare Health Services -Covenant House | 929 Atlantic Ave Atlantic City, NJ 08401-7401
AtlantiCare Health Services Mission Health Galloway | 54 W Jimmie Leeds Rd STE 8 Galloway, NJ 08205-9438
Atlanticare Health Services Site | 1401 Atlantic Ave Ste 2600 Atlantic City, NJ 08401-7001

● **COMMUNITY HEALTH CARE, INC.**

Colt Connection at Cumberland Regional High School | 90 Silver Lake Rd Bridgeton, NJ 08302
CompleteCare Adult & Specialty Medical Professionals | 30 N Pearl St Bridgeton, NJ 08302-1947
CompleteCare Medical & Dental Professionals | 530 High St N Millville, NJ 08332-3009
CompleteCare Medical & Dental Professionals | 3700 New Jersey Ave Wildwood, NJ 08260-6154
CompleteCare Medical Professionals | 3 Broadway Cape May Court House, NJ 08210-1937
CompleteCare Pediatric & Family Medical Professionals | 265 Irving Ave Bridgeton, NJ 08302-2121
CompleteCare Smile Center | 105 Manheim Ave STE 11 Bridgeton, NJ 08302-2139
CompleteCare Vineland Health Campus | 785 W Sherman Ave Vineland, NJ 08360-6913
CompleteCare Women's Medical Professionals | 484 S Brewster Rd South Vineland, NJ 08361-7874
CompleteCare Women's Medical Professionals | 105 Manheim Ave STE 7 Bridgeton, NJ 08302-2139
Hallways to Health at Vineland High School | 3010 E Chestnut Ave STE sw1 Vineland, NJ 08361-6103
Kids' Center at Downe Twp. Elementary School | Downe Twnshp Elem Sch, Rt 553 Newport, NJ 08345
Kids' Corner at Broad St. School | 251 W Broad St Bridgeton, NJ 08302-2315
RiteCare at Vineland ShopRite | 1255 W Landis Ave Vineland, NJ 08360-3462
Teen Center at Bridgeton High School | 111 New St Bridgeton, NJ 08302-2405
Wellness on Wheels (WOW) Mobile | 785 W Sherman Ave Vineland, NJ 08360-6913

● **OCEAN HEALTH INITIATIVES INC**

OHI - Little Egg | 798 Cr-539 Tuckerton, NJ 08087-4202
OHI at Stafford Township | 333 Haywood Rd Manahawkin, NJ 08050-2839



NATIONAL ASSOCIATION OF
Community Health Centers

Representative Jeff Van Drew
118th United States Congress

New Jersey's **2ND** Congressional District

38

**NUMBER OF DELIVERY SITES IN
CONGRESSIONAL DISTRICT**

(main organization in bold)

● **SOUTHERN JERSEY FAMILY MEDICAL CENTERS, INC.**

Atlantic City | 1301 Atlantic Ave Atlantic City, NJ 08401-7247

Hammonton - SOUTHERN JERSEY FAMILY MEDICAL | 860 S White Horse Pike Hammonton, NJ 08037-2018

Mobile Medical Van | Atlantic City Expy Hammonton, NJ 08037

Pleasantville | 932 S Main St Pleasantville, NJ 08232-3646

Salem Health Center | 238 E Broadway Salem, NJ 08079-1108

Southern Jersey at English Creek | 3003 English Creek Ave Ste C6 Egg Harbor Township, NJ 08234-4818

Women and Children's Health Pavilion | 1125 Atlantic Ave Atlantic City, NJ 08401-4806