



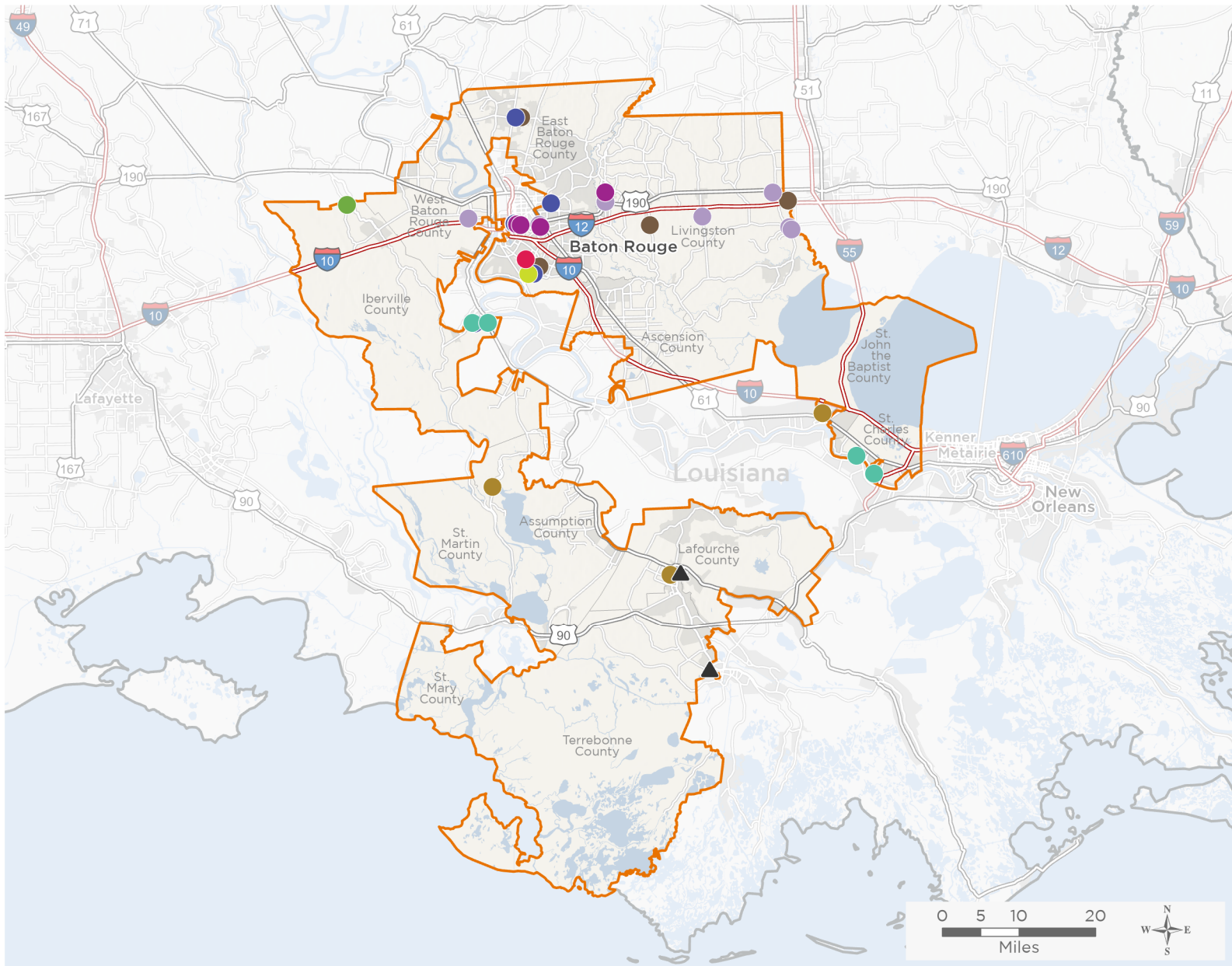
NATIONAL ASSOCIATION OF  
Community Health Centers

# Representative Garret Graves

## 118th United States Congress

Louisiana's **6<sup>TH</sup>** Congressional District

The 10 federally-funded health center organizations with a presence in Louisiana's 6th Congressional District leverage **\$38,648,332** in federal investments to serve **154,401** patients.



**34**

**NUMBER OF DELIVERY SITES  
IN CONGRESSIONAL DISTRICT**

- Federally-funded Delivery Site (each color represents one organization)
- Health Center Program Look-Alikes
- 118th Congressional District Boundaries
- County Boundaries
- Interstates
- Highways
- Populated Places
- Major Roads

Notes | Delivery sites represent locations of organizations funded by the federal Health Center Program. Health Center Program Look-Alikes are community-based health care providers that meet the requirements of the HRSA Health Center Program, but do not receive Health Center Program funding. Some locations may overlap due to scale or may otherwise not be visible when mapped. Federal investments represent the total funding from the federal Health Center Program to grantees with a presence in the state in 2021.

Sources | Federally-Funded Delivery Site Locations and Health Center Program Look-Alikes: data.HRSA.gov, December 2022.  
Health Center Patients and Federal Funding | 2021 Uniform Data System, Bureau of Primary Health Care, HRSA.

© National Association of Community Health Centers, 2023. For more information, please contact [federalaffairs@nachc.org](mailto:federalaffairs@nachc.org).



**34**

### NUMBER OF DELIVERY SITES IN CONGRESSIONAL DISTRICT

(main organization in bold)

#### **ACCESS HEALTH LOUISIANA**

- Destrehan High SBHC | 1 Wildcat Ln Destrehan, LA 70047-4001
- MSA-West Academy | 57955 Saint Louis Rd Plaquemine, LA 70764-6624
- Plaquemine High School SBHC | 59595 Belleview Rd Plaquemine, LA 70764-6500
- St Charles Community Health Center - Norco | 16004 River Rd Norco, LA 70079-2040

#### **BATON ROUGE PRIMARY CARE COLLABORATIVE, INC.**

- Kenilworth S&T School Healthy Students | 7600 Boone Ave Baton Rouge, LA 70808-6716

#### **CAPITOL CITY FAMILY HEALTH CENTER INC**

- Capitol City Family Health Center- Plaquemine (Iberville Parish) | 59340 River West Dr Plaquemine, LA 70764-6553
- Capitol City Family Health Center, Inc. | 3140 Florida Blvd Baton Rouge, LA 70806
- CareSouth @ GEO Prep Academy Greater Baton Rouge | 4006 Platt Dr Baton Rouge, LA 70814-4216
- CareSouth @ South Baton Rouge Charter Academy | 9211 Parkway Dr Baton Rouge, LA 70810-7020
- Caresouth Behavioral Health At Zachary, La | 4852 Zachary Slaughter Hwy STE A Zachary, LA 70791-3530
- CareSouth Pediatric and WIC Services | 3324 Florida St Baton Rouge, LA 70806-3761

#### **EXCELTH**

- EXCELth, Inc. FHC - BATON ROUGE | 4560 North Blvd STE 104 Baton Rouge, LA 70806-4043

#### **HIV/AIDS ALLIANCE FOR REGION TWO (HAART), INC.**

- Admin Office - 4550 North Blvd | 4550 North Blvd STE 250 Baton Rouge, LA 70806-4013
- Mobile Unit #1 | 4550 North Blvd Baton Rouge, LA 70806-4013
- OHCC - 30789 Range Avenue | 30789 N Range Ave Denham Springs, LA 70726
- OHCC - 3849 North Blvd | 3849 North Blvd Baton Rouge, LA 70806-3854
- OHCC - Colonial | 781 Colonial Dr Baton Rouge, LA 70806-6512
- OHCC - Main - 3801 North Blvd | 3801 North Blvd Baton Rouge, LA 70806-3825

#### **INNIS COMMUNITY HEALTH CENTER INC**

- Maringouin Community Health Center | 77575 Landry Dr Maringouin, LA 70757-3210

#### **RKM PRIMARY CARE**

- RKM at Albany Middle School | 29675 Reeves Ln Albany, LA 70711-3520
- RKM at Denham Springs Elementary | 306 N Range Ave Denham Springs, LA 70726-3424
- RKM at Springfield Elementary School | 25190 Blood River Rd Springfield, LA 70462-8077
- RKM Primary Care Baton Rouge | 455 E Airport Ave Baton Rouge, LA 70806-4832
- RKM Primary Care Livingston | 28315 S Frost Rd Livingston, LA 70754-2612
- RKM Primary Care Springfield | 27124 Highway 42 Springfield, LA 70462-7979
- WBR Primary Care at Port Allen High School | 3553 Rosedale Rd Port Allen, LA 70767-4347



**34**

### NUMBER OF DELIVERY SITES IN CONGRESSIONAL DISTRICT

(main organization in bold)

#### ● **SOUTHEAST COMMUNITY HEALTH SYSTEMS**

Southeast Community Health Systems-Zachary | 6351 Main St Zachary, LA 70791-4038

Southeast Community Health Systems - Albany Location | 30575 Old Baton Rouge Hwy Hammond, LA 70403-8350

Southeast Community Health Systems - Livingston Head Start | 25753 Walker South Rd Denham Springs, LA 70726

Southeast Community Health Systems -Women's Healthcare | 8913 Bluebonnet Blvd Baton Rouge, LA 70810-2974

#### ● **ST GABRIEL HEALTH CLINIC INC**

The Gardere Center for Primary Care Services operated by sghc, Inc. | 1707 Gardere Ln Baton Rouge, LA 70820-8144

#### ● **TECHE ACTION BOARD, INC.**

Teche Action Clinic @ Laplace Elementary School | 393 Greenwood Dr La Place, LA 70068-2535

Teche Action Clinic @ Pierre Part | 3528 Highway 70 S Pierre Part, LA 70339-4452

Teche Action Clinic @ Thibodaux | 1709 Ridgefield Rd Thibodaux, LA 70301-4333

#### ▲ **HEALTH CENTER PROGRAM LOOK-ALIKES**

Health Center Program Look-Alikes are community-based health care providers that meet the requirements of the HRSA Health Center Program, but do not receive Health Center Program funding.

#### **LIFE COAST COMMUNITY HEALTH CENTER INC**

Life Coast Community Health Center Houma | 165 Corporate Dr Houma, LA 70360-2767

Life Coast Community Health Center Thibodaux | 1101 Audubon Ave STE S1 Thibodaux, LA 70301-4957