



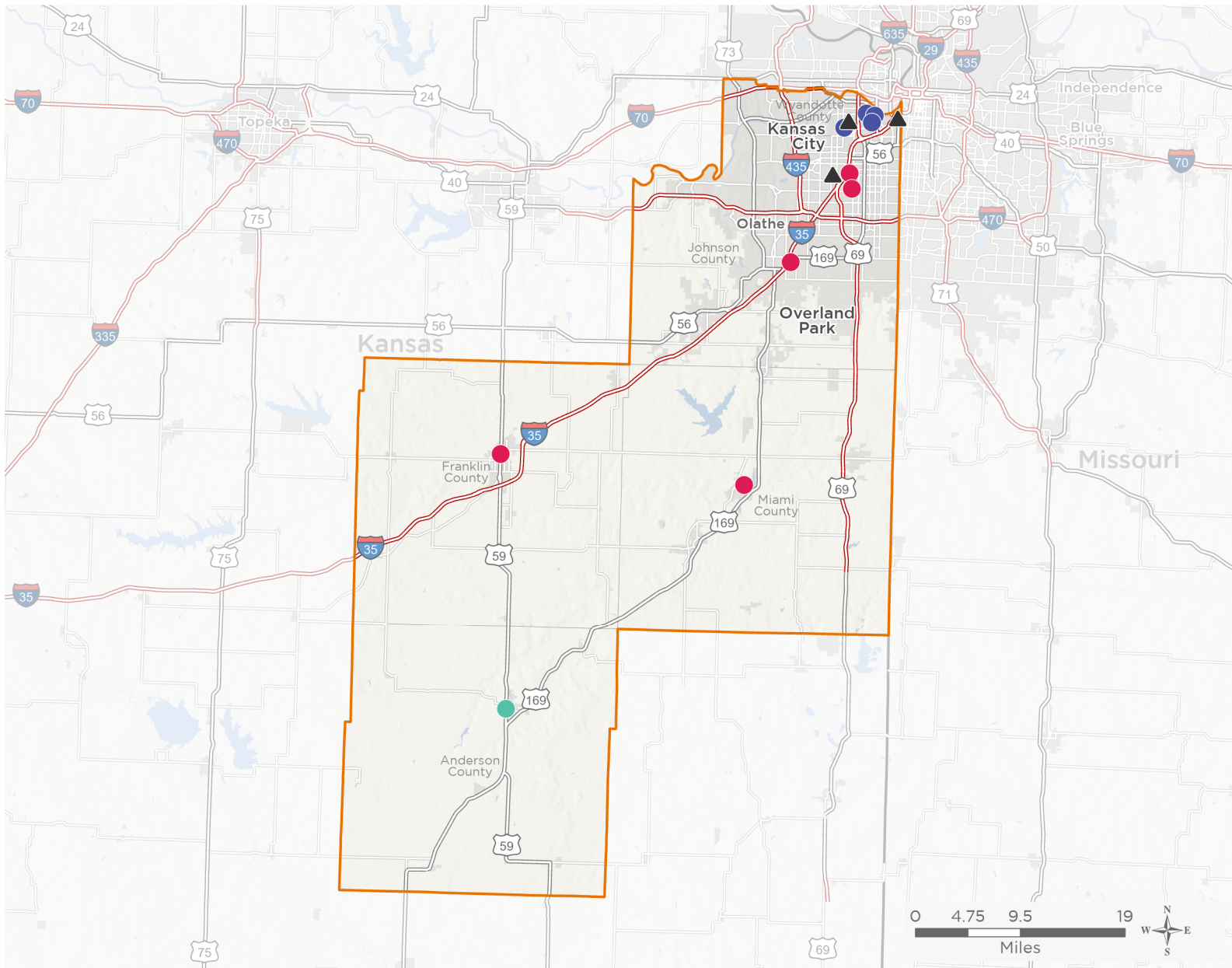
NATIONAL ASSOCIATION OF  
Community Health Centers

# Representative Sharice Davids

## 118th United States Congress

Kansas's **3<sup>RD</sup>** Congressional District

The 3 federally-funded health center organizations with a presence in Kansas's 3rd Congressional District leverage **\$9,500,678** in federal investments to serve **87,837** patients.



**11**

**NUMBER OF DELIVERY SITES  
IN CONGRESSIONAL DISTRICT**

- Federally-funded Delivery Site (each color represents one organization)
- Health Center Program Look-Alikes
- 118th Congressional District Boundaries
- County Boundaries
- Populated Places
- Interstates
- Highways
- Major Roads

Notes | Delivery sites represent locations of organizations funded by the federal Health Center Program. Health Center Program Look-Alikes are community-based health care providers that meet the requirements of the HRSA Health Center Program, but do not receive Health Center Program funding. Some locations may overlap due to scale or may otherwise not be visible when mapped. Domestic violence shelters are excluded from the map and delivery site statistics. Federal investments represent the total funding from the federal Health Center Program to grantees with a presence in the state in 2021.

Sources | Federally-Funded Delivery Site Locations and Health Center Program Look-Alikes: data.HRSA.gov, December 2022.  
Health Center Patients and Federal Funding | 2021 Uniform Data System, Bureau of Primary Health Care, HRSA.

© National Association of Community Health Centers, 2023. For more information, please contact [federalaffairs@nachc.org](mailto:federalaffairs@nachc.org).



11

### NUMBER OF DELIVERY SITES IN CONGRESSIONAL DISTRICT

(main organization in bold)

#### **COMMUNITY HEALTH CENTER OF SOUTHEAST KANSAS INC**

Pheasant Ridge Community Health Center of Southeast Kansas | 312 S Maple St Garnett, KS 66032-1333

#### **HEALTH PARTNERSHIP CLINIC, INC.**

Health Partnership Clinic - Shawnee Mission West HS | 8800 W 85th St Overland Park, KS 66212-3545

Health Partnership Clinic Olathe Suite 207 | 407 S Clairborne Rd STE 207 Olathe, KS 66062-1744

Health Partnership Clinic, Inc. | 9119 W 74th St STE 210 Shawnee Mission, KS 66204-2229

Health Partnership Clinic, Inc. | 407 S Clairborne Rd, Ste 104 Olathe, KS 66062-1744

Health Partnership Clinic, Inc. | 107 S Main St Ottawa, KS 66067-2327

Health Partnership Clinic, Inc. | 1604 Industrial Park Dr Paola, KS 66071-9528

#### **TURNER HOUSE CLINIC INC.**

Vibrant Health - Argentine | 1428 S 32nd St STE 100 Kansas City, KS 66106-2160

Vibrant Health - Argentine Middle School | 2123 Ruby Ave Kansas City, KS 66106-2990

Vibrant Health - J.C. Harmon High School | 2400 Steele Rd Kansas City, KS 66106-4318

Vibrant Health - Oak Grove Elementary School | 5340 Oak Grove Rd Kansas City, KS 66106-3239

#### **HEALTH CENTER PROGRAM LOOK-ALIKES**

Health Center Program Look-Alikes are community-based health care providers that meet the requirements of the HRSA Health Center Program, but do not receive Health Center Program funding.

#### **MERCY & TRUTH MEDICAL MISSIONS, INC**

MTMM-Shawnee | 11644 W 75th St STE 103 Shawnee, KS 66214-1300

#### **SHARON LEE FAMILY HEALTH CARE INC**

Sharon Lee Family Health Care Rosedale | 340 Southwest Blvd Kansas City, KS 66103-2150

Sharon Lee Family Health Care Turner | 2002 S 51st St Kansas City, KS 66106-2419