



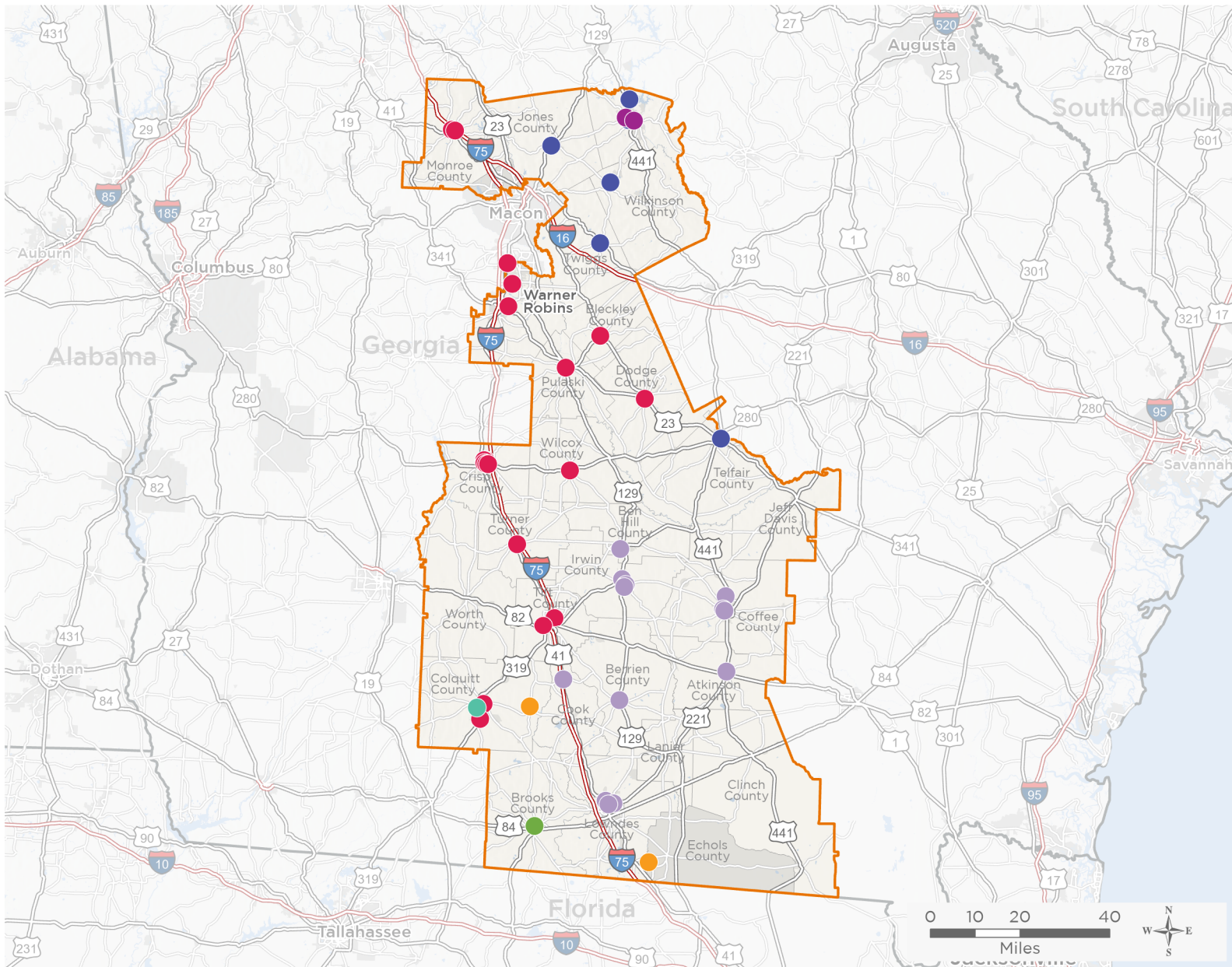
NATIONAL ASSOCIATION OF
Community Health Centers

Representative Austin Scott

118th United States Congress

Georgia's **8TH** Congressional District

The 7 federally-funded health center organizations with a presence in Georgia's 8th Congressional District leverage **\$36,068,800** in federal investments to serve **242,318** patients.



53

**NUMBER OF DELIVERY SITES
IN CONGRESSIONAL DISTRICT**

- ● ● ● ● ● ● Federally-funded Delivery Site (each color represents one organization)
- ▲ Health Center Program Look-Alikes
- 118th Congressional District Boundaries
- County Boundaries
- Populated Places
- Interstates
- Highways
- Major Roads

Notes | Delivery sites represent locations of organizations funded by the federal Health Center Program. Health Center Program Look-Alikes are community-based health care providers that meet the requirements of the HRSA Health Center Program, but do not receive Health Center Program funding. Some locations may overlap due to scale or may otherwise not be visible when mapped. Domestic violence shelters are excluded from the map and delivery site statistics. Federal investments represent the total funding from the federal Health Center Program to grantees with a presence in the state in 2021.

Sources | Federally-Funded Delivery Site Locations and Health Center Program Look-Alikes: data.HRSA.gov, December 2022.
Health Center Patients and Federal Funding | 2021 Uniform Data System, Bureau of Primary Health Care, HRSA.

© National Association of Community Health Centers, 2023. For more information, please contact federalaffairs@nachc.org.



53

NUMBER OF DELIVERY SITES IN CONGRESSIONAL DISTRICT

(main organization in bold)

ALBANY AREA PRIMARY HEALTH CARE, INC

AAPHC Covenant Counseling Center | 600 2nd St SE Moultrie, GA 31768-5514

CARECONNECT HEALTH INC

- CareConnect Convenient Care | 130 N Lee St Forsyth, GA 31029-2122
- CareConnect Convenient Care | 6005 Watson Blvd STE 100 Byron, GA 31008-6542
- CareConnect Convenient Care | 277 Perry Pkwy STE C Perry, GA 31069-8428
- CareConnect Convenient Care | 259 Broad St Hawkinsville, GA 31036-4818
- CareConnect Convenient Care | 1909 US Highway 82 W STE 5 Tifton, GA 31793-8213
- CareConnect Convenient Care and Pediatrics | 817 Griffin Ave Eastman, GA 31023-6718
- CareConnect Dental Van 2 | 414 S Frontage Rd Lot 53 Forsyth, GA 31029-3025
- CareConnect Family Practice | 109 S 3rd St Cochran, GA 31014-6718
- CareConnect Family Practice | 712 N 7th St Cordele, GA 31015-3271
- CareConnect Family Practice and Pediatrics | 636 2nd Ave Rochelle, GA 31079-2046
- CareConnect Family Practice and Pediatrics | 317 E Washington Ave Ashburn, GA 31714-5248
- CareConnect Infectious Disease Clinic | 110 E 13th Ave Cordele, GA 31015-4245
- CareConnect OBGYN | 412 E 4th Ave Cordele, GA 31015-3619
- CareConnect Pediatrics | 760 26th Ave SE Moultrie, GA 31768-6799
- CareConnect Urgent Care | 602 E 16th Ave STE B Cordele, GA 31015-1782
- CareConnect Urgent Care | 1805 Tift Ave N STE D Tifton, GA 31794-3579
- CareConnect Urgent Care | 340 Veterans Pkwy N STE 9-11 Moultrie, GA 31788-4171
- New Hope Clinic | 215 E 13th Ave Cordele, GA 31015-4249
- Pediatric Convenient Care | 1114 Ga Highway 96 STE d3-d5 Kathleen, GA 31047-2111
- Pediatric Convenient Care | 1909 Us Highway 82 STE 3 Tifton, GA 31793-8213
- Pediatric Urgent Care | 1007 E 16th Ave STE A Cordele, GA 31015-4553

COMMUNITY HEALTH CARE SYSTEM INC

- CHCs, Inc-Baldwin School | 100 Abc Dr Milledgeville, GA 31061-4906
- CHCS, INC - Mobile Unit | 4292 Gray Hwy Gray, GA 31032-5900
- Community Health Care Systems Inc-WILKINSON | 218 Milledgeville Hwy Gordon, GA 31031-3827
- Community Health Care Systems, Inc-Telfair | 280 E Willow Creek Ln Mc Rae, GA 31055-5128
- Community Health Care Systems, Inc. | 101 Watson Dr Jeffersonville, GA 31044-5508
- Community Health Care Systems, Inc.- Jones County | 4292 Gray Hwy Gray, GA 31032-5900
- Community Health Care Systems, Inc. Baldwin County | 102 Airport Rd NE APT A Milledgeville, GA 31061-9313

DEPARTMENT OF COMMUNITY HEALTH GEORGIA

- Colquitt Co. BOH - Ellenton Farmworker Clinic Mobile Clinic | 185 N Baker St Norman Park, GA 31771-5268
- Colquitt County Board of Health, Ellenton Clinic | 185 N Baker St Norman Park, GA 31771-5268
- Migrant Farmworkers Clinic, Inc | 2186 J Frank Culpepper Rd Lake Park, GA 31636-5624



53

NUMBER OF DELIVERY SITES IN CONGRESSIONAL DISTRICT

(main organization in bold)

DEPARTMENT OF COMMUNITY HEALTH GEORGIA

South Central Primary Care Center - Douglas | 1309 Ocilla Rd STE A Douglas, GA 31533-2209

South Central Primary Care Center - Pearson | 640 Main St N Pearson, GA 31642-7549

OCONEE VALLEY HEALTHCARE, INC

Oconee Valley Healthcare, Inc. Milledgeville | 510 N Cobb St Milledgeville, GA 31061-2635

Oconee Valley Healthcare, Inc. River Edge | 60 Ga Highway 22 W Milledgeville, GA 31061-6606

PRIMARY CARE OF SOUTHWEST GEORGIA, INC.

Primary Care of Southwest Georgia - Quitman | 907 N Court St Quitman, GA 31643-1315

SOUTH CENTRAL PRIMARY CARE CENTER INC

Betty Dupree Health Care Center | 201 N Bartow St Nashville, GA 31639-1435

Coffee County High School | 159 Trojan Way Douglas, GA 31533-8263

Douglas Family Health | 1309 Ocilla Rd Douglas, GA 31533-2209

Irwin County School Health Center | 521 LAX Hwy Ocilla, GA 31774-2225

Kid's Health | 119 Norman Dorminy Dr STE A Fitzgerald, GA 31750-9069

Kid's Health | 303 Shirley Ave STE B Douglas, GA 31533-2373

Kid's Health - IC Schools | 149 Chieftain Cir Ocilla, GA 31774-2231

Kid's Health - Valdosta | 2707 N Barack Obama Blvd Valdosta, GA 31602-2057

Lenox Family Medicine | 15 S Railroad St Lenox, GA 31637-7424

Northside Family Health Center | 247 Northside Dr STE B Valdosta, GA 31602-1892

Psychiatric and Counseling Services | 303 Shirley Ave STE A Douglas, GA 31533-2367

South Central Family Health Care | 607 N Irwin Ave Ocilla, GA 31774-5009

South Central Family Medicine | 640 Main St N Pearson, GA 31642-7549

South Central Family Medicine Mobile Unit | 640 Main St N Pearson, GA 31642-7549

South Central Women's Health | 119 Norman Dorminy Dr STE B Fitzgerald, GA 31750-9069

Valdosta Internal Medicine | 3308 Greystone Way Valdosta, GA 31605-1096