



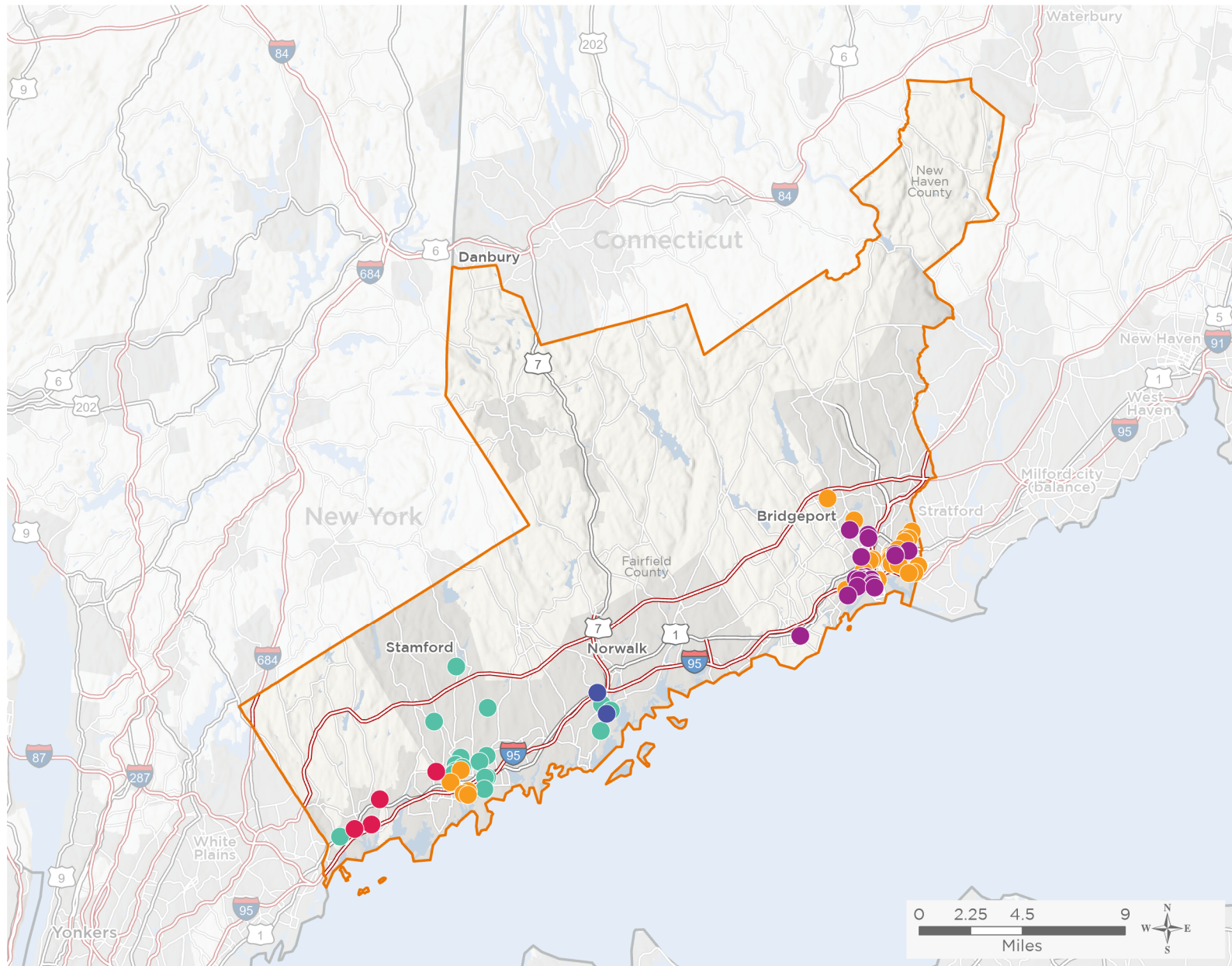
NATIONAL ASSOCIATION OF
Community Health Centers

Representative Jim Himes

118th United States Congress

Connecticut's **4TH** Congressional District

The 5 federally-funded health center organizations with a presence in Connecticut's 4th Congressional District leverage **\$19,516,930** in federal investments to serve **182,998** patients.



74

**NUMBER OF DELIVERY SITES
IN CONGRESSIONAL DISTRICT**

- ● ● ● Federally-funded Delivery Site (each color represents one organization)
- ▲ Health Center Program Look-Alikes
- 118th Congressional District Boundaries
- County Boundaries
- Populated Places
- Interstates
- Highways
- Major Roads

Notes | Delivery sites represent locations of organizations funded by the federal Health Center Program. Health Center Program Look-Alikes are community-based health care providers that meet the requirements of the HRSA Health Center Program, but do not receive Health Center Program funding. Some locations may overlap due to scale or may otherwise not be visible when mapped. Domestic violence shelters are excluded from the map and delivery site statistics. Federal investments represent the total funding from the federal Health Center Program to grantees with a presence in the state in 2021.

Sources | Federally-Funded Delivery Site Locations and Health Center Program Look-Alikes: data.HRSA.gov, December 2022.
Health Center Patients and Federal Funding | 2021 Uniform Data System, Bureau of Primary Health Care, HRSA.

© National Association of Community Health Centers, 2023. For more information, please contact federalaffairs@nachc.org.



74

NUMBER OF DELIVERY SITES IN CONGRESSIONAL DISTRICT

(main organization in bold)

COMMUNITY HEALTH CENTER, INCORPORATED

- CGC Lathon Wider | 137 Henry St Stamford, CT 06902-5835
- CGC Maple Avenue CGC-SBHC | 90 Maple Ave Stamford, CT 06902-4040
- CGC William Pitt | 195 Hillandale Ave Stamford, CT 06902-2823
- CHC of Stamford @ Fifth Street | 22 5th St Stamford, CT 06905-5030
- Child Guidance Center of Southern Connecticut | 103 W Broad St Bldg 103 Stamford, CT 06902-3713
- Child Guidance Center of Southern Connecticut | 401 Shippan Ave Stamford, CT 06902-6075
- Child Guidance Center of Southern Connecticut | 81 Holly Hill Ln FL 2 Greenwich, CT 06830-6071
- Day Street Community Health Center | 49 Day St Norwalk, CT 06854-4901
- Franklin Street Community Health Center | 141 Franklin St Stamford, CT 06901-1014
- Hart Magnet School SBHC | 61 Adams Ave Stamford, CT 06902-3702
- J.M. Wright Technical High School SBHC | 120 Bridge St Stamford, CT 06905-4401
- Julia A. Stark Elementary School SBHC | 398 Glenbrook Rd Stamford, CT 06906-2122
- Northeast Elementary School SBHC | 82 Scofieldtown Rd Stamford, CT 06903-4020
- Norwalk Smiles At Ben Franklin - SBHC | 165 Flax Hill Rd Norwalk, CT 06854-2837
- Norwalk Smiles At Nathaniel Ely Head Start - SBHC | 11 Ingalls Ave Norwalk, CT 06854-4605
- Roxbury Elementary School SBHC | 751 W Hill Rd Stamford, CT 06902-1413
- Springdale Elementary School SBHC | 1127 Hope St Stamford, CT 06907-1825
- Trailblazers Academy/Domus Charter Schools SBHC | 83 Lockwood Ave Stamford, CT 06902-4201

FAMILY CENTERS INC

- Family Centers Health Care at 60 Palmers Hill | 60 Palmers Hill Rd Stamford, CT 06902-2113
- Family Centers Health Care at Wilbur Peck Court | 111 Wilbur Peck Ct Greenwich, CT 06830-6323
- FCHC at 20 Bridge Street | 20 Bridge St Greenwich, CT 06830-5238
- FCHC SBHC at Greenwich High School | 10 Hillside Rd RM 632 Greenwich, CT 06830-4835

NORWALK COMMUNITY HEALTH CENTER, INC.

- 120 Connecticut Avenue, Norwalk, CT 06854 | 120 Connecticut Ave Norwalk, CT 06854-1525
- Mobile Van #1 | 120 Connecticut Ave Norwalk, CT 06854-1525
- Norwalk Community Health Center @ Smilow Life Center | 55 Chestnut St Norwalk, CT 06854-3622

OPTIMUS HEALTH CARE, INC.

- Barnum/Waltersville Elementary School - SBHC | 495 Waterview Ave Bridgeport, CT 06608-2554
- Bullard-Havens Technical High School - SBHC | 500 Palisade Ave Bridgeport, CT 06610-3458
- Columbus Elementary School - SBHC | 275 George St Bridgeport, CT 06604-3320
- Fairchild Wheeler Interdistrict Magnet Campus - SBHC | Old Town Rd Bridgeport, CT 06606
- Housatonic Community College Health Center | 900 Lafayette Blvd Bridgeport, CT 06604-4704
- Jettie S. Tisdale Elementary School - SBHC | 250 Hollister Ave Bridgeport, CT 06607-1924
- JFK Elementary School - SBHC | 700 Palisade Ave Bridgeport, CT 06610-3457



74

**NUMBER OF DELIVERY SITES IN
CONGRESSIONAL DISTRICT**

(main organization in bold)

OPTIMUS HEALTH CARE, INC.

Luis Munoz Marin Elementary School - SBHC | 479 Helen St Bridgeport, CT 06608-1321
OPTIMUS at Freeman Street | 30 Freeman St Bridgeport, CT 06607-1548
OPTIMUS at Hall Neighborhood House | 52 George E Pipkins Way # 39S Bridgeport, CT 06608-2425
OPTIMUS at Inspirica | 8 Woodland Pl Stamford, CT 06902-6939
OPTIMUS at Kinsella | 1862 Commerce Dr Bridgeport, CT 06605-2230
OPTIMUS Fairgate | 9 Fairgate Dr Stamford, CT 06902-4927
OPTIMUS Harbor Point | 805 Atlantic St Stamford, CT 06902-6805
OPTIMUS Hollow Community Health Center | 82 George St Bridgeport, CT 06604-3315
OPTIMUS JP Morgan Chase Wellness Center | 1071 E Main St Bridgeport, CT 06608-1618
OPTIMUS Main Street Pediatrics | 3715 Main St Bridgeport, CT 06606-3618
OPTIMUS on Barnum Avenue | 471 Barnum Ave Bridgeport, CT 06608-2409
OPTIMUS on East Main | 982 E Main St Bridgeport, CT 06608-1913
OPTIMUS on the Boulevard | 1351 Washington Blvd Stamford, CT 06902-2419
OPTIMUS Pacific House Shelter | 597 Pacific St Stamford, CT 06902-5814
OPTIMUS Park City Primary Care | 64 Black Rock Ave Bridgeport, CT 06605-1200
OPTIMUS Ralphola Taylor Community Health Center | 790 Central Ave Bridgeport, CT 06607-1705
OPTIMUS Smiles for Miles Mobile Dental Center | 975 E Main St Bridgeport, CT 06608-1914
OPTIMUS Transitional Clinic | 480 Bond St Bridgeport, CT 06610-2205
OPTIMUS at Recovery Counseling Services | 1438 Park Ave Bridgeport, CT 06604-2512
Warren Harding High School - SBHC | 379 Bond St Bridgeport, CT 06610-2201

SOUTHWEST COMMUNITY HEALTH CENTER, INC.

Bassick High School, School Based Health Clinic | 1181 Fairfield Ave Bridgeport, CT 06605-1183
Casa | 690 Arctic St Bridgeport, CT 06608-2008
Casa Recovery | 1124 Iranistan Ave Bridgeport, CT 06605-1121
Central High School, School Based Health Center | 1 Lincoln Blvd Bridgeport, CT 06606-5502
Cesar Batalla, School Based Health Center | 606 Howard Ave Bridgeport, CT 06605-2016
Family Health Center | 762 Lindley St Bridgeport, CT 06606-5046
Florance Blackham School, School Based Health Center | 425 Thorne St Bridgeport, CT 06606-3418
Harrison Apartments | 651 State St Bridgeport, CT 06604-4507
James J. Curiale School | 300 Laurel Ave Bridgeport, CT 06605-1103
Liberation Programs | 399 Mill Hill Ave Bridgeport, CT 06610-2865
Mobile Medical Unit #1 | 46 Albion St Bridgeport, CT 06605-2602
Operation Hope | 50 Nichols St Fairfield, CT 06824-5816
Pivot Ministries | 495 Jane St Bridgeport, CT 06608-1707
Prospect House | 392 Prospect St Bridgeport, CT 06604-4625
Read School, School Based Health Center | 130 Ezra St Bridgeport, CT 06606-5061



NATIONAL ASSOCIATION OF
Community Health Centers

Representative Jim Himes
118th United States Congress

Connecticut's **4TH** Congressional District

74

**NUMBER OF DELIVERY SITES IN
CONGRESSIONAL DISTRICT**

(main organization in bold)

● **SOUTHWEST COMMUNITY HEALTH CENTER, INC.**

Roosevelt School School Based Health Center | 680 Park Ave Bridgeport, CT 06604-4610
Southwest Community Health Center, Inc - Uc | 1020 Fairfield Ave Bridgeport, CT 06605-1187
Southwest Community Hlth Ctr, Inc | 968 Fairfield Ave Bridgeport, CT 06605-1116
Southwest Community Hlth Ctr, Inc | 46 Albion St Bridgeport, CT 06605-2602
Southwest Community Hlth Ctr,Inc | 510 Clinton Ave Bridgeport, CT 06605-1701
Southwest Community Hlth Ctr,Inc | 1046 Fairfield Ave Bridgeport, CT 06605-1116
Windward Apartments | 509 Park Ave Bridgeport, CT 06604-5859