



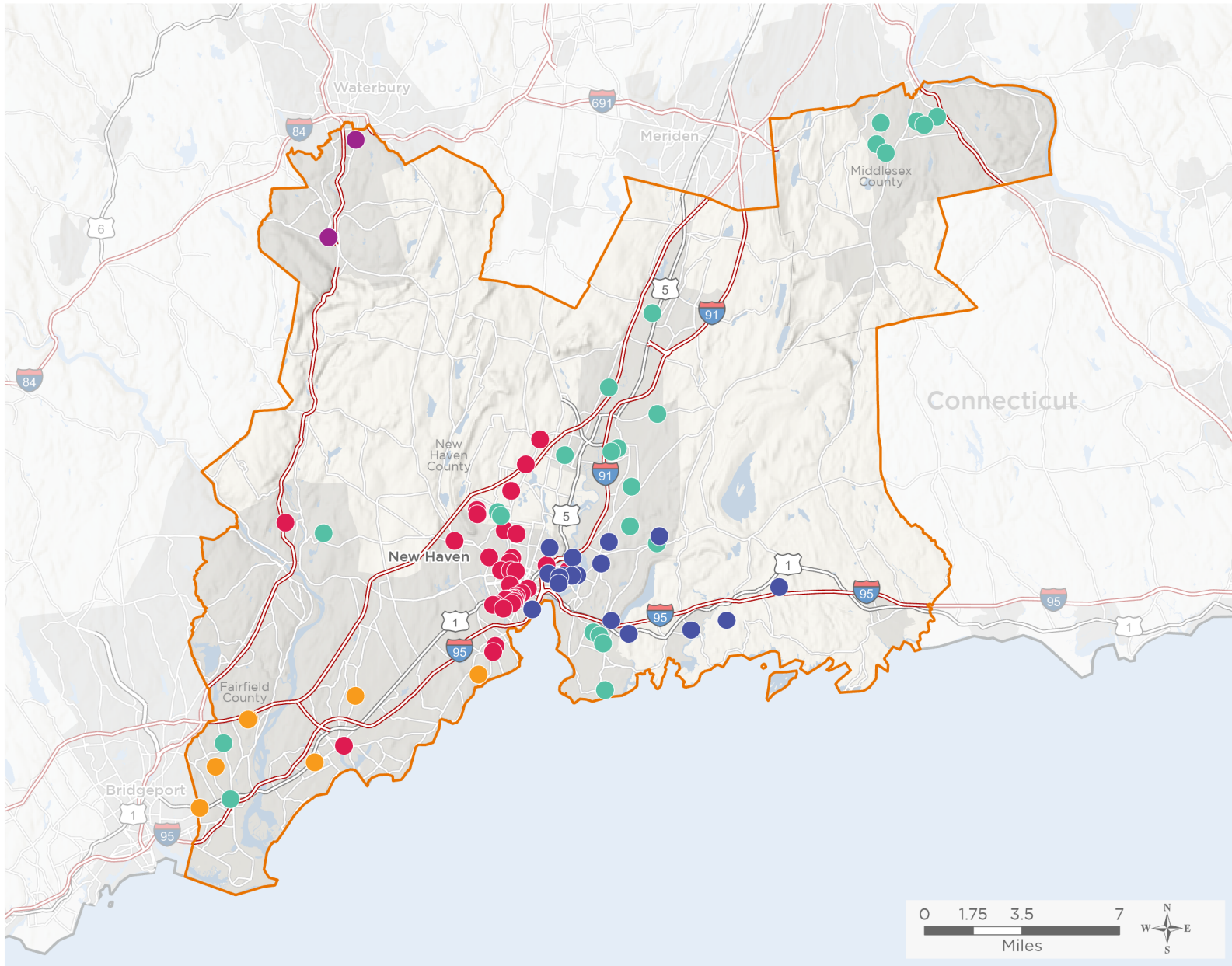
NATIONAL ASSOCIATION OF
Community Health Centers

Representative Rosa DeLauro

118th United States Congress

Connecticut's **3RD** Congressional District

The 5 federally-funded health center organizations with a presence in Connecticut's 3rd Congressional District leverage **\$28,537,283** in federal investments to serve **247,886** patients.



90

**NUMBER OF DELIVERY SITES
IN CONGRESSIONAL DISTRICT**

- Federally-funded Delivery Site (each color represents one organization)
- Health Center Program Look-Alikes
- 118th Congressional District Boundaries
- County Boundaries
- Interstates
- Highways
- Populated Places
- Major Roads

Notes | Delivery sites represent locations of organizations funded by the federal Health Center Program. Health Center Program Look-Alikes are community-based health care providers that meet the requirements of the HRSA Health Center Program, but do not receive Health Center Program funding. Some locations may overlap due to scale or may otherwise not be visible when mapped. Domestic violence shelters are excluded from the map and delivery site statistics. Federal investments represent the total funding from the federal Health Center Program to grantees with a presence in the state in 2021.

Sources | Federally-Funded Delivery Site Locations and Health Center Program Look-Alikes: data.HRSA.gov, December 2022.
Health Center Patients and Federal Funding | 2021 Uniform Data System, Bureau of Primary Health Care, HRSA.

© National Association of Community Health Centers, 2023. For more information, please contact federalaffairs@nachc.org.



90

NUMBER OF DELIVERY SITES IN CONGRESSIONAL DISTRICT

(main organization in bold)

COMMUNITY HEALTH CENTER, INCORPORATED

- Beman Middle School SBHC | 370 Hunting Hill Ave Middletown, CT 06457-4334
- Bielefield Elementary School SBHC | 70 Maynard St Middletown, CT 06457-4519
- Clintonville Elementary School SBHC | 456 Clintonville Rd North Haven, CT 06473-2815
- Deer Run School SBHC | 311 Foxon Rd East Haven, CT 06513-2017
- Dominick Ferrara Elementary School SBHC | 22 Maynard Rd East Haven, CT 06513-1250
- East Haven High School SBHC | 35 Wheelbarrow Ln East Haven, CT 06513-2003
- Eli Whitney Technical High School SBHC | 71 Jones Rd Hamden, CT 06514-4602
- Eli Whitney Technical High School SBHC | 100 Fairview Ave Hamden, CT 06514-4822
- Farm Hill Elementary SBHC | 398 Ridge Rd Middletown, CT 06457-4437
- Frank Scott Bunnell High School SBHC | 1 Bulldog Blvd Stratford, CT 06614-2333
- Green Acres Elementary School SBHC | 146 Upper State St North Haven, CT 06473-1280
- Grove J. Tuttle Elementary School SBHC | 108 Prospect Rd East Haven, CT 06512-3307
- Joseph Melillo Middle School SBHC | 67 Hudson St East Haven, CT 06512-1524
- Momauguin Elementary School | 99 Cosey Beach Rd East Haven, CT 06512-4621
- Montowese Elementary School SBHC | 145 Fitch St North Haven, CT 06473-3706
- North Haven High School SBHC | 221 Elm St North Haven, CT 06473-3251
- North Haven Middle School SBHC | 55 Bailey Rd North Haven, CT 06473-2652
- O'Brien Technical High School SBHC | 141 Prindle Ave Ansonia, CT 06401-2561
- Overbrook Early Learning Center SBHC | 54 Gerrish Ave East Haven, CT 06512-2725
- Pathways Academy SBHC | 35 Bishop St East Haven, CT 06512-2939
- Ridge Hill Elementary School SBHC | 1341 Ridge Rd North Haven, CT 06473-3005
- Stratford High School SBHC | 45 N Parade St Stratford, CT 06615-5822
- Vinal Technical High School SBHC | 60 Daniels St Middletown, CT 06457-4941
- Wesley Elementary School SBHC | 10 Wesleyan Hills Rd Middletown, CT 06457-4958
- Wilbert Snow Elementary School SBHC | 299 Wadsworth St Middletown, CT 06457-4019
- WYA Master's Manna | 428 S Cherry St Wallingford, CT 06492-4431

CORNELL SCOTT-HILL HEALTH CORPORATION

- 393 Building | 393 Columbus Ave New Haven, CT 06519-1236
- Brennan-Rogers Magnet School | 199 Wilmot Rd New Haven, CT 06515-1006
- Church Street School SBHC | 95 Church St Hamden, CT 06514-3436
- Columbus House Shelter Clinic | 586 Ella T Grasso Blvd New Haven, CT 06519-1806
- Community Soup Kitchen-Broadway | 84 Broadway New Haven, CT 06511-3412
- Cornell Scott-Hill Health Corporation | 400 Columbus Ave New Haven, CT 06519-1233
- CS-HHC Ansonia | 121 Wakelee Ave Ansonia, CT 06401-1198
- CS-HHC at Augusta Lewis Troup School | 259 Edgewood Ave New Haven, CT 06511-4106
- CS-HHC at Beth-El Center Homeless Clinic | 90 New Haven Ave Milford, CT 06460-4827



90

NUMBER OF DELIVERY SITES IN CONGRESSIONAL DISTRICT

(main organization in bold)

CORNELL SCOTT-HILL HEALTH CORPORATION

CS-HHC at Boys and Girls Club of New Haven | 253 Columbus Ave New Haven, CT 06519-2230

CS-HHC at CMHC | 34 Park St New Haven, CT 06519-1109

CS-HHC at Dr. Reginald Mayo Early Learning Center | 185 Goffe St New Haven, CT 06511-3307

CS-HHC at Sargent Drive | 150 Sargent Dr STE 1-200 New Haven, CT 06511-6100

CS-HHC at Sargent Drive | 150 Sargent Dr STE 2-200 New Haven, CT 06511-6100

CS-HHC at The Towers | 18 Tower Ln New Haven, CT 06519-1764

Davis Street School Clinic | 35 Davis St New Haven, CT 06515-1601

Dixwell Child & Family Guidance | 226 Dixwell Ave Ste Esp New Haven, CT 06511-3456

Dixwell Health Center | 226 Dixwell Ave New Haven, CT 06511-3456

Fellowship Place Homeless Outrea | 441 Elm St New Haven, CT 06511-4523

Grant Street Partnership Program at West Haven | 285 Main St West Haven, CT 06516-7307

Hamden High School | 2040 Dixwell Ave Hamden, CT 06514-2415

Hamden Middle School | 2623 Dixwell Ave Hamden, CT 06518-3304

Hill Central School Clinic | 140 Dewitt St New Haven, CT 06519-2133

King Robinson SBHC | 150 Fournier St New Haven, CT 06511-1763

Life Haven Shelter Homless Out | 447 Ferry St New Haven, CT 06513-3617

Lincoln-Bassett Community School SBHC | 130 Bassett St New Haven, CT 06511-1879

Martha's Place | 559 Howard Ave New Haven, CT 06519-2139

Men's Seasonal Overflow Shelter Clinic | 209R Terminal Ln New Haven, CT 06519-1800

Northside Comm Outpatient Services | 226 Dixwell Ave Ste Ns New Haven, CT 06511-3456

Roberto Clemente School Clinic | 360 Columbus Ave New Haven, CT 06519-1516

Safe Haven Homeless Clinic | 210 State St New Haven, CT 06510-3345

South Central Rehab Center | 232 Cedar St New Haven, CT 06519-1610

State Street Health & Counseling Services | 911 State St New Haven, CT 06511-3926

Taking Initiative Center/Marrakech | 514 Whalley Ave New Haven, CT 06511-2907

Truman School Based Health Ctr | 114 Truman St New Haven, CT 06519-2022

West Haven Health Center | 410 Campbell Ave West Haven, CT 06516-5014

Wilmington Crossing Health Center | 120 Wilmot Rd STE 1030 New Haven, CT 06515-1007

FAIR HAVEN COMMUNITY HEALTH CLINIC INC

BHcare | 14 Sycamore Way Branford, CT 06405-6551

Bishop Woods Architecture and Design Magnet SBHC | 1481 Quinnipiac Ave New Haven, CT 06513-1520

Clinton Avenue School Based Health Center | 293 Clinton Ave New Haven, CT 06513-2814

East Haven High School | 35 Wheelbarrow Ln East Haven, CT 06513-2003

Fair Haven Community Health Care at 150 Sargent Drive | 150 Sargent Dr STE 1-300 New Haven, CT 06511-6100

Fair Haven Community Health Center | 374 Grand Ave New Haven, CT 06513-3733

Fair Haven Community Health Center @ 50 Grand | 50 Grand Ave New Haven, CT 06513-3949



90

**NUMBER OF DELIVERY SITES IN
CONGRESSIONAL DISTRICT**

(main organization in bold)

FAIR HAVEN COMMUNITY HEALTH CLINIC INC

Fair Haven K-8 School Based Health Center | 164 Grand Ave New Haven, CT 06513-3938
Fair Haven Medical Group at Bella Vista | 339 Eastern St New Haven, CT 06513-2463
Family Academy of Multi-Lingual Exploration (FAME) | 255 Blatchley Ave New Haven, CT 06513-3509
John B. Sliney Elementary School | 23 Eades St Branford, CT 06405-3628
John Martinez K-8 School Based Health Center | 100 James St New Haven, CT 06513-4222
Joseph Melillo Middle School | 67 Hudson St East Haven, CT 06512-1524
Mary R. Tisko Elementary School | 118 Damascus Rd Branford, CT 06405-3979
Multicultural Ambulatory Addictions Services | 426 East St New Haven, CT 06511-5018
Shoreline Family Health Care | 221 W Main St Branford, CT 06405-4022
Wilbur Cross High School Body Shop | 181 Mitchell Dr New Haven, CT 06511-2515

OPTIMUS HEALTH CARE, INC.

Chapel Street Elementary School - SBHC | 380 Chapel St Stratford, CT 06614-1690
David Wooster Middle School - SBHC | 150 Lincoln St Stratford, CT 06614-4000
Harry B. Flood Middle School - SBHC | 490 Chapel St Stratford, CT 06614-1690
OPTIMUS Milford Community Health Center at Bridges | 949 Bridgeport Ave Milford, CT 06460-3142
OPTIMUS on Boston Avenue | 305 Boston Ave Stratford, CT 06614-5246
Platt Technical High School - SBHC | 600 Orange Ave Milford, CT 06461-2157
West Haven High School - SBHC | 1 Mcdonough Plz West Haven, CT 06516-5257

STAYWELL HEALTH CARE, INC.

StayWell Naugatuck Health Center | 30 Church St Naugatuck, CT 06770-4112
StayWell South End Health Center | 1302 S Main St Waterbury, CT 06706-1748
StayWell South End Health Center II | 1309 S Main St Waterbury, CT 06706-1758