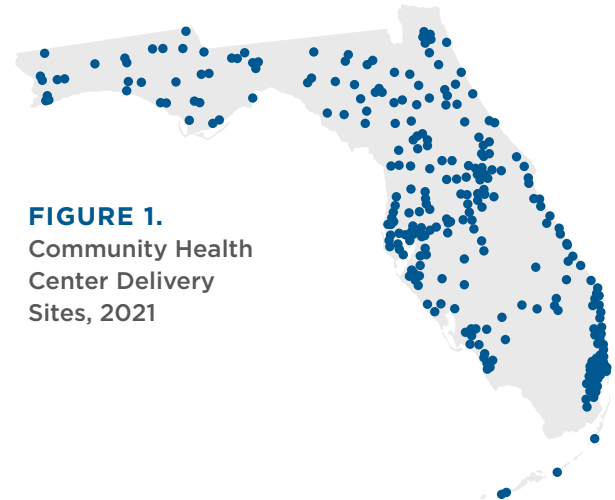


Economic Impact of Community Health Centers in Florida

COMMUNITY HEALTH CENTERS IN FLORIDA

- Florida is home to 47 Community Health Centers and 754 delivery sites. See **Figure 1** for a map of all Community Health Center sites in the state.
- In 2021, clinicians at Community Health Centers in Florida treated more than 2 million patients in more than 6 million visits for primary care as well as dental, vision, mental health, and substance abuse.

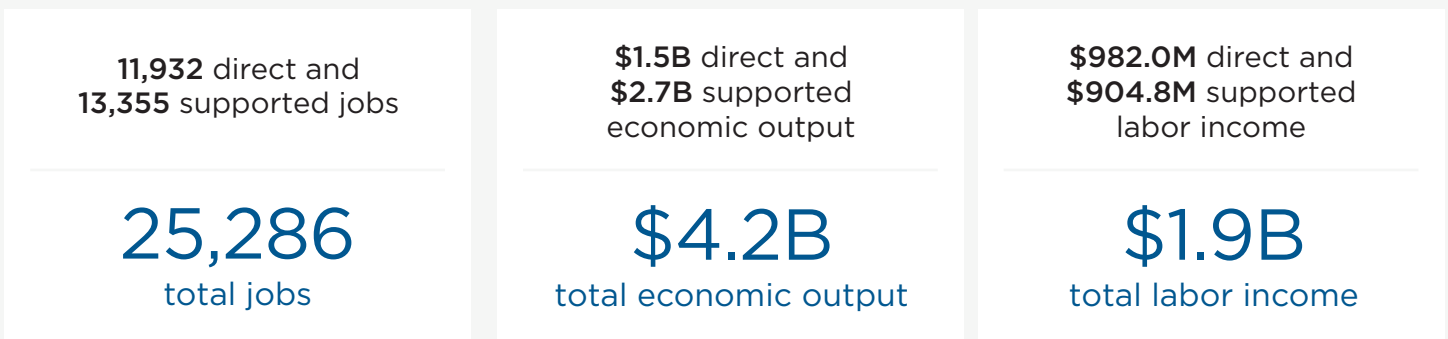


ANALYSIS OF COMMUNITY HEALTH CENTER IMPACT IN FLORIDA

Many empirical studies have shown that Community Health Centers have positive effects for patients and yield cost savings by reducing the need for other healthcare services. In addition to these benefits, Community Health Centers positively impact the economies in which they operate by employing workers and supporting additional jobs and economic activity in the area.

According to a Matrix Global Advisors (MGA) analysis, which quantifies the direct and indirect economic impact of Community Health Centers in Florida, these centers supported 25,286 jobs, \$4.2 billion in economic output, and \$1.9 billion in labor income in the state in 2021 (see **Figure 2**). For results by congressional district, see **Table 1** on the next page.

FIGURE 2. Economic Impact of Community Health Centers in Florida



Note: Totals may differ from sum of numbers due to rounding.

DATA AND METHODOLOGY

This analysis was conducted by MGA using input-output models, built by IMPLAN, of Florida and its 28 congressional districts. IMPLAN models are widely used across government, academia, nonprofit, and corporate settings. Drawing on publicly available historical economic data, the models project economic indicators (e.g., production and employment levels) by industry. Data from the Health Resources and Services Administration on actual Community Health Center expenses in 2021 serve as inputs to the IMPLAN models.

For a more detailed description of data and methodology as well as national and state-level results, see the full MGA report.

About Community Health Centers

The federal Health Center Program supports qualified community healthcare facilities providing care for medically underserved areas or populations. Federally qualified Community Health Centers, which have been shown to provide vital and cost-efficient healthcare, serve an ever-increasing number of patients, with the majority at or near the federal poverty level. The patient population now totals more than 30 million, but federal funding has not kept pace with the increase in patients or the rise in inflation.

TABLE 1. Economic Impact of Community Health Centers in Florida’s Congressional Districts

DISTRICT	Employment			Economic Output (\$ Millions)			Labor Income (\$ Millions)		
	Direct	Supported	Total	Direct	Supported	Total	Direct	Supported	Total
FL-01	405	426	831	\$53.0	\$83.9	\$136.9	\$33.3	\$28.0	\$61.3
FL-02	555	494	1,048	\$69.9	\$97.4	\$167.4	\$42.6	\$32.8	\$75.3
FL-03	497	432	929	\$62.6	\$85.7	\$148.3	\$42.9	\$28.4	\$71.3
FL-04	139	321	460	\$18.0	\$65.8	\$83.8	\$12.5	\$22.5	\$34.9
FL-05	70	315	386	\$9.1	\$64.1	\$73.2	\$6.5	\$22.2	\$28.7
FL-06	245	296	541	\$31.0	\$57.8	\$88.7	\$23.2	\$19.2	\$42.4
FL-07	199	344	544	\$27.3	\$68.8	\$96.1	\$17.4	\$23.7	\$41.2
FL-08	629	530	1,159	\$79.3	\$106.2	\$185.5	\$51.3	\$35.7	\$87.0
FL-09	205	355	560	\$26.3	\$66.3	\$92.6	\$16.5	\$23.1	\$39.6
FL-10	325	513	839	\$42.3	\$98.6	\$140.9	\$28.2	\$34.7	\$62.9
FL-11	435	465	901	\$58.3	\$91.3	\$149.6	\$40.6	\$31.1	\$71.6
FL-12	333	316	649	\$40.1	\$62.4	\$102.4	\$24.3	\$20.8	\$45.2
FL-13	326	458	784	\$42.1	\$93.0	\$135.1	\$24.8	\$32.2	\$57.0
FL-14	564	596	1,160	\$71.7	\$125.6	\$197.2	\$50.4	\$41.9	\$92.4
FL-15	459	499	958	\$58.0	\$104.8	\$162.8	\$39.7	\$34.8	\$74.5

DISTRICT	Employment			Economic Output (\$ Millions)			Labor Income (\$ Millions)		
	Direct	Supported	Total	Direct	Supported	Total	Direct	Supported	Total
FL-16	701	621	1,321	\$95.5	\$127.4	\$223.0	\$64.6	\$42.3	\$106.9
FL-17	336	404	740	\$43.3	\$77.1	\$120.4	\$27.4	\$26.3	\$53.7
FL-18	921	662	1,583	\$118.7	\$134.2	\$252.8	\$77.8	\$44.2	\$122.0
FL-19	612	542	1,154	\$79.0	\$106.2	\$185.2	\$50.0	\$35.7	\$85.7
FL-20	352	481	834	\$41.4	\$96.0	\$137.4	\$24.6	\$32.9	\$57.5
FL-21	266	382	648	\$33.9	\$74.2	\$108.1	\$20.3	\$25.5	\$45.8
FL-22	132	371	504	\$15.4	\$71.0	\$86.4	\$9.3	\$25.1	\$34.4
FL-23	164	383	547	\$19.7	\$75.7	\$95.4	\$11.5	\$26.3	\$37.7
FL-24	1,040	859	1,898	\$129.5	\$176.5	\$306.0	\$79.5	\$58.8	\$138.3
FL-25	48	320	368	\$6.0	\$63.5	\$69.5	\$3.5	\$22.1	\$25.6
FL-26	826	734	1,560	\$110.9	\$149.3	\$260.1	\$64.5	\$49.9	\$114.4
FL-27	563	611	1,174	\$75.6	\$125.3	\$200.9	\$44.8	\$42.2	\$87.0
FL-28	584	623	1,207	\$85.6	\$126.7	\$212.3	\$50.1	\$42.5	\$92.6
TOTAL	11,932	13,355	25,286	\$1,543.4	\$2,674.5	\$4,217.9	\$982.0	\$904.8	\$1,886.8

Note: Totals may differ from sum of numbers due to rounding.

ABOUT MGA

MGA is an economic consulting firm in Washington, DC, specializing in fiscal, healthcare, and tax policy. Founded in 2007, MGA helps *Fortune* 500 companies, trade associations, healthcare providers, investment banks, and others understand and convey the economics of policy issues. Drawing on years of policy experience, the MGA team uses analytics to help identify, quantify, and solve economic policy problems. More information about MGA can be found at www.GetMGA.com.

This report was sponsored by the National Association of Community Health Centers (NACHC). MGA is solely responsible for the content.

