



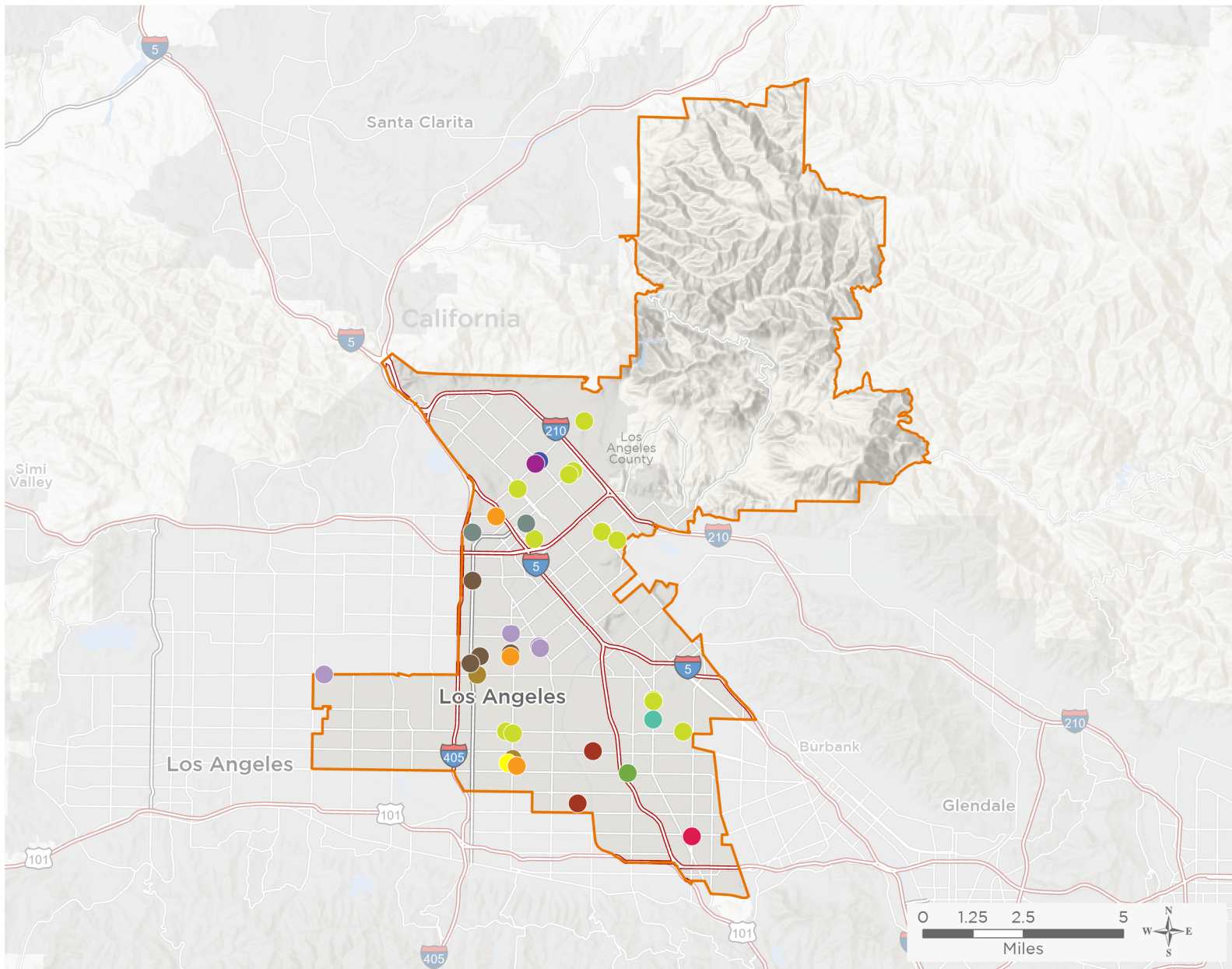
NATIONAL ASSOCIATION OF  
Community Health Centers

# Representative Tony Cárdenas

118th United States Congress

California's **29<sup>TH</sup>** Congressional District

The 13 federally-funded health center organizations with a presence in California's 29th Congressional District leverage **\$46,854,662** in federal investments to serve **336,910** patients.



**46**

**NUMBER OF DELIVERY SITES  
IN CONGRESSIONAL DISTRICT**

- Federally-funded Delivery Site (each color represents one organization)
- Health Center Program Look-Alikes
- 118th Congressional District Boundaries
- County Boundaries
- Interstates
- Highways
- Populated Places
- Major Roads

Notes | Delivery sites represent locations of organizations funded by the federal Health Center Program. Health Center Program Look-Alikes are community-based health care providers that meet the requirements of the HRSA Health Center Program, but do not receive Health Center Program funding. Some locations may overlap due to scale or may otherwise not be visible when mapped. Federal investments represent the total funding from the federal Health Center Program to grantees with a presence in the state in 2021.

Sources | Federally-Funded Delivery Site Locations and Health Center Program Look-Alikes: data.HRSA.gov, December 2022.  
Health Center Patients and Federal Funding | 2021 Uniform Data System, Bureau of Primary Health Care, HRSA.

© National Association of Community Health Centers, 2023. For more information, please contact [federalaffairs@nachc.org](mailto:federalaffairs@nachc.org).



**46**

### NUMBER OF DELIVERY SITES IN CONGRESSIONAL DISTRICT

(main organization in bold)



#### **AAA COMPREHENSIVE HEALTHCARE INC**

AAA Comprehensive Healthcare | 7451 Lankershim Blvd North Hollywood, CA 91605-2803

AAA Mobile Unit | 7451 Lankershim Blvd North Hollywood, CA 91605-2803



#### **ALL FOR HEALTH, HEALTH FOR ALL, INC.**

All For Health - North Hollywood | 5160 Vineland Ave STE 109 North Hollywood, CA 91601-3888



#### **BENEVOLENCE INDUSTRIES INC**

Benevolence Health Center - Sylmar | 12610 Glenoaks Blvd Fl 1st Sylmar, CA 91342-4783



#### **CENTER FOR FAMILY HEALTH & EDUCATION, INC.**

Center for Family Health & Education, Inc | 8727 Van Nuys Blvd STE 101 Panorama City, CA 91402-2463

Center for Family Health & Education, Inc. | 8727 Van Nuys Blvd STE 102 Panorama City, CA 91402-2400

Center for Family Health & Education, Inc. | 8727 Van Nuys Blvd Ste 203 Panorama City, CA 91402-2462

Center for Family Health & Education, Inc. dba Priority Care Medical Group - Mission Hills | 14901 Rinaldi St STE 202 Mission Hills, CA 91345-1254

Center for Family Health & Education, Inc. dba Priority Care Medical Group - Mobile Unit 1 | 8727 Van Nuys Blvd Panorama City, CA 91402-2451

Center for Family Health & Education, Inc. dba Priority Care Medical Group - Panorama City | 8727 Van Nuys Blvd STE 105 Panorama City, CA 91402-2451

Center for Family Health & Education, Inc. dba Priority Care Medical Group - Van Nuys | 14407 Hamlin St STE B Van Nuys, CA 91401-6200



#### **COMMUNITY MEDICAL WELLNESS CENTERS, USA**

CMWC Sylmar Mobile Clinic | 14117 Hubbard St UNIT M Sylmar, CA 91342-4765

Community Medical Wellness Centers USA-Sylmar | 14117 Hubbard St UNIT M Sylmar, CA 91342-4765



#### **COMPREHENSIVE COMMUNITY HEALTH CENTERS, INC.**

Comprehensive Community Health Centers, Inc-North Hollywood | 12157 Victory Blvd North Hollywood, CA 91606



#### **EL PROYECTO DEL BARRIO, INC.**

Arleta Health Center | 8902 Woodman Ave Arleta, CA 91331-6401

El Proyecto Del Barrio--Northridge Community Clinic | 18250 Roscoe Blvd STE 200 Northridge, CA 91325-4226

El Proyecto del Barrio, Inc., Esperanza Clinic | 9140 Van Nuys Blvd STE 207 Panorama City, CA 91402-6763

El Proyecto Dental Center | 8932 Woodman Ave Arleta, CA 91331-8021



#### **MISSION CITY COMMUNITY NETWORK, INC.**

Mission City Community Network- Panorama City | 8771 Van Nuys Blvd Panorama City, CA 91402-2401

Mission City Community Network- Sepulveda | 8527 Sepulveda Blvd North Hills, CA 91343-5824

Mission City Community Network - Parthenia | 15210 Parthenia St North Hills, CA 91343-5305



**46**

## NUMBER OF DELIVERY SITES IN CONGRESSIONAL DISTRICT

(main organization in bold)

### **MISSION CITY COMMUNITY NETWORK, INC.**

Mission City Community Network - Mission Hills | 10200 Sepulveda Blvd STE 300 Mission Hills, CA 91345-3321

Mission City Community Network - SFV- Mobile II. | 8527 Sepulveda Blvd North Hills, CA 91343-5824

Mission City Community Network, Inc. | 15206 Parthenia St North Hills, CA 91343-5305

### **NORTHEAST VALLEY HEALTH CORPORATION**

Children's Hospital La Family Housing | 7817 Lankershim Blvd North Hollywood, CA 91605-2523

Los Angeles Mission College | 13356 Eldridge Ave Sylmar, CA 91342-3200

Maclay Wellness Center | 12451 Gain St Pacoima, CA 91331-1642

NEVHC DUI Program | 1036 N Maclay Ave San Fernando, CA 91340-1326

Northeast Valley Health Corporation Mobile | 1172 N Maclay Ave San Fernando, CA 91340-1328

Pacoima Health Center | 12756 Van Nuys Blvd Pacoima, CA 91331-1626

Pacoima Women's Health Center | 12759 Van Nuys Blvd Pacoima, CA 91331-1627

Pediatric Health & Wic Center | 7138 Van Nuys Blvd Van Nuys, CA 91405-3005

San Fernando Health Center | 1600 San Fernando Rd San Fernando, CA 91340-3115

San Fernando High School - Teen Health Center | 11051 Omelveny Ave San Fernando, CA 91340-4424

Sun Valley Health Center | 7223 Fair Ave Sun Valley, CA 91352-4964

Transitions to Wellness | 7843 Lankershim Blvd North Hollywood, CA 91605-2523

Transitions to Wellness | 6551 Van Nuys Blvd STE 201 Van Nuys, CA 91401-1490

Van Nuys Adult Health Center | 14624 Sherman Way FL 6 Van Nuys, CA 91405-2241

### **PEDIATRIC & FAMILY MEDICAL CENTER**

Eisner Health at Panorama City - Pediatrics | 15253 Roscoe Blvd Panorama City, CA 91402-4401

Eisner Health at Panorama City OB | 15251 Roscoe Blvd Panorama City, CA 91402-4401

Eisner Health at Van Nuys | 6618 Van Nuys Blvd Van Nuys, CA 91405-4617

### **SAN FERNANDO COMMUNITY HOSPITAL**

San Fernando Community Health Center | 732 Mott St San Fernando, CA 91340-4237

San Fernando Community Health Center - Mission Hills | 11134 Sepulveda Blvd STE 110 Mission Hills, CA 91345-1114

### **SOUTHERN CALIFORNIA MEDICAL CENTER, INC.**

SCMC Van Nuys | 14550 Haynes St Van Nuys, CA 91411-1613

### **VALLEY COMMUNITY HEALTHCARE**

LAVC Student Health Center | 5800 Fulton Ave FL 1 Valley Glen, CA 91401-4062

Valley Community Healthcare | 6801 Coldwater Canyon Ave North Hollywood, CA 91605-5162