



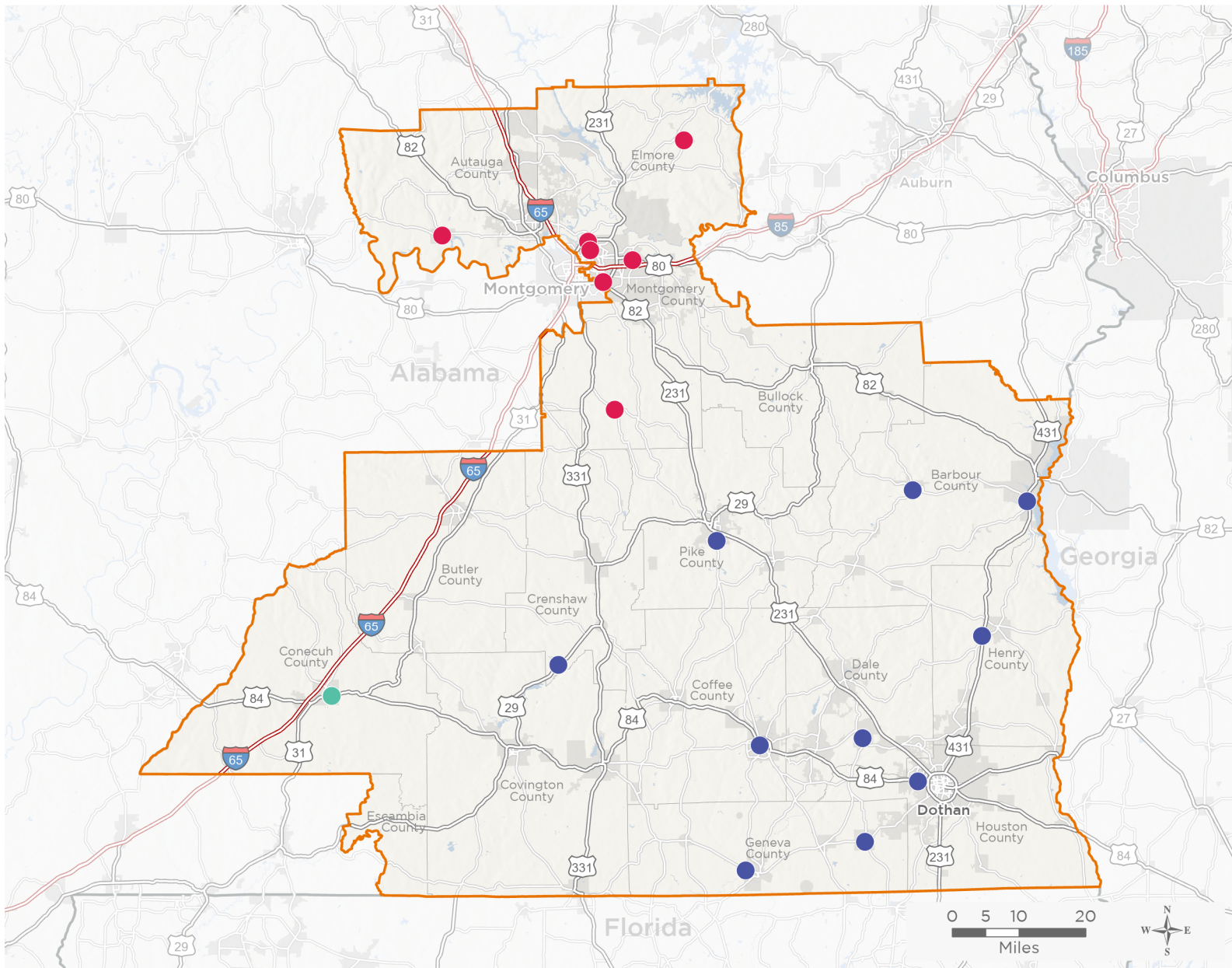
NATIONAL ASSOCIATION OF
Community Health Centers

Representative Barry Moore

118th United States Congress

Alabama's **2ND** Congressional District

The 3 federally-funded health center organizations with a presence in Alabama's 2nd Congressional District leverage **\$25,684,223** in federal investments to serve **106,124** patients.



20

**NUMBER OF DELIVERY SITES
IN CONGRESSIONAL DISTRICT**

- ● ● Federally-funded Delivery Site (each color represents one organization)
- ▲ Health Center Program Look-Alikes
- 118th Congressional District Boundaries
- County Boundaries
- Populated Places
- Interstates
- Highways
- Major Roads

Notes | Delivery sites represent locations of organizations funded by the federal Health Center Program. Health Center Program Look-Alikes are community-based health care providers that meet the requirements of the HRSA Health Center Program, but do not receive Health Center Program funding. Some locations may overlap due to scale or may otherwise not be visible when mapped. Federal investments represent the total funding from the federal Health Center Program to grantees with a presence in the state in 2021.

Sources | Federally-Funded Delivery Site Locations and Health Center Program Look-Alikes: data.HRSA.gov, December 2022.
Health Center Patients and Federal Funding | 2021 Uniform Data System, Bureau of Primary Health Care, HRSA.

© National Association of Community Health Centers, 2023. For more information, please contact federalaffairs@nachc.org.



20

**NUMBER OF DELIVERY SITES IN
CONGRESSIONAL DISTRICT**

(main organization in bold)

FRANKLIN PRIMARY HEALTH CENTER, INC.

Evergreen Family Medical Center | 316 S Main St Evergreen, AL 36401-3325

Franklin Evergreen Family Health Center | 100 Edwina St Evergreen, AL 36401-3319

HEALTH SERVICES, (INC)

Autaugaville Family Health Center | 203 N Taylor St Autaugaville, AL 36003-2663

Chisholm Family Health Center | 100 E Vandiver Blvd Montgomery, AL 36110-1812

Eclectic Family Health Center | 30 Main St Eclectic, AL 36024-5614

Gateway Family Health Center | 2905 E South Blvd Montgomery, AL 36116-2501

Health Services, Inc. Montgomery Community Response Unit | 2905 E South Blvd Montgomery, AL 36116-2501

Highland Gardens School Based Health Center | 2801 Willena Ave Montgomery, AL 36107-1055

Montgomery East Family Health Center | 309 Saint Lukes Dr Montgomery, AL 36117-7109

Ramer Family Health Center | 5422 State Highway 94 Ramer, AL 36069-5008

SOUTHEAST ALABAMA RURAL HEALTH ASSOCIATE

Abbeville Family Health Center | 615 Ozark Rd Abbeville, AL 36310-2629

Clayton Family Health Center | 7 Western Byp Clayton, AL 36016-2013

Dothan Family Health Center | 4300 W Main St STE 300 Dothan, AL 36305-1313

Dozier Family Health Center | 18131 Dozier Hwy Dozier, AL 36028-2719

Enterprise Children's Center And Family Medicine | 105 E Watts St Enterprise, AL 36330-2511

Eufaula Family Health Center | 23 Veterans Blvd Eufaula, AL 36027-4444

Geneva Family Health Center A | 100 W Lake Professional Park, Ste 3 Geneva, AL 36340-1200

Newton Family Health Center | 193 Oates Dr Newton, AL 36352-4312

SARHA Doctors Center | 1412 Elba Hwy Troy, AL 36079-6020

Slocomb Family Health Center | 162 S Dalton St Slocomb, AL 36375-5669